



CSD Plan - LT 472234

Survey Number	LT 472234
Surveyor Reference	33301 P3 Stage 1A
Surveyor	Albert Edward Herron
Survey Firm	Wood & Partners Consultants Ltd
Surveyor Declaration	I Albert Edward Herron, being a licensed cadastral surveyor, certify that: (a) this dataset provided by me and its related survey are accurate, correct and in accordance with the Cadastral Survey Act 2002 and the Rules for Cadastral Survey 2010, and (b) the survey was undertaken by me or under my personal direction. Declared on 11 Mar 2014 12:19 PM

Survey Details

Dataset Description	Lots 53, 54, 62 - 98, 104 - 112, 500, 501, 818, 819, 900, 905, 1000 and 1001 being a Subdivision of Lot 2 DP 467806		
Purpose	LT Subdivision		
Status	Approved as to Survey	Type	Survey
Land District	North Auckland	Survey Class	Class A
Coordinate System	Mount Eden 2000		

Survey Dates

Surveyed Date	12/02/2014	Certified Date	11/03/2014
Submitted Date	11/03/2014 12:19:58	Survey Approval Date	20/03/2014
Deposit Date			

Referenced Surveys

Survey Number	Land District	Bearing Correction
SO 21437	North Auckland	0°00'00"
DP 67675	North Auckland	0°00'00"
DP 179822	North Auckland	0°00'00"
DP 354443	North Auckland	0°00'00"
DP 357053	North Auckland	0°00'00"
SO 364653	North Auckland	0°00'00"
SO 404054	North Auckland	0°00'00"
DP 411139	North Auckland	0°00'00"
DP 415528	North Auckland	0°00'00"
DP 428122	North Auckland	0°00'00"
DP 438194	North Auckland	0°00'00"
SO 444908	North Auckland	0°00'00"
SO 457160	North Auckland	0°00'00"
DP 457312	North Auckland	0°00'00"
DP 467806	North Auckland	0°00'00"



CSD Plan - LT 472234

Territorial Authorities

Auckland

Comprised In

CT 627824

Created Parcels

Parcels	Parcel Intent	Area	CT Reference
Lot 53 Deposited Plan 472234	Fee Simple Title	0.0679 Ha	643493
Lot 54 Deposited Plan 472234	Fee Simple Title	0.0655 Ha	643494
Lot 62 Deposited Plan 472234	Fee Simple Title	0.0650 Ha	643495
Lot 63 Deposited Plan 472234	Fee Simple Title	0.0673 Ha	643496
Lot 64 Deposited Plan 472234	Fee Simple Title	0.0663 Ha	643497
Lot 65 Deposited Plan 472234	Fee Simple Title	0.0616 Ha	643498
Lot 66 Deposited Plan 472234	Fee Simple Title	0.0563 Ha	643499
Lot 67 Deposited Plan 472234	Fee Simple Title	0.0570 Ha	643500
Lot 68 Deposited Plan 472234	Fee Simple Title	0.0574 Ha	643501
Lot 69 Deposited Plan 472234	Fee Simple Title	0.0569 Ha	643502
Lot 70 Deposited Plan 472234	Fee Simple Title	0.0496 Ha	643503
Lot 71 Deposited Plan 472234	Fee Simple Title	0.0680 Ha	643504
Lot 72 Deposited Plan 472234	Fee Simple Title	0.0601 Ha	643505
Lot 73 Deposited Plan 472234	Fee Simple Title	0.0640 Ha	643506
Lot 74 Deposited Plan 472234	Fee Simple Title	0.0610 Ha	643507
Lot 75 Deposited Plan 472234	Fee Simple Title	0.0595 Ha	643508
Lot 76 Deposited Plan 472234	Fee Simple Title	0.0651 Ha	643509
Lot 77 Deposited Plan 472234	Fee Simple Title	0.0774 Ha	643510
Lot 78 Deposited Plan 472234	Fee Simple Title	0.0652 Ha	643511
Lot 79 Deposited Plan 472234	Fee Simple Title	0.0655 Ha	643512
Lot 80 Deposited Plan 472234	Fee Simple Title	0.0650 Ha	643513
Lot 81 Deposited Plan 472234	Fee Simple Title	0.0583 Ha	643514
Lot 82 Deposited Plan 472234	Fee Simple Title	0.0560 Ha	643515
Lot 83 Deposited Plan 472234	Fee Simple Title	0.0576 Ha	643516
Lot 84 Deposited Plan 472234	Fee Simple Title	0.0650 Ha	643517
Lot 85 Deposited Plan 472234	Fee Simple Title	0.0531 Ha	643518
Lot 86 Deposited Plan 472234	Fee Simple Title	0.0540 Ha	643519
Lot 87 Deposited Plan 472234	Fee Simple Title	0.0545 Ha	643520
Lot 88 Deposited Plan 472234	Fee Simple Title	0.0650 Ha	643521
Lot 89 Deposited Plan 472234	Fee Simple Title	0.0653 Ha	643522
Lot 90 Deposited Plan 472234	Fee Simple Title	0.0678 Ha	643523
Lot 91 Deposited Plan 472234	Fee Simple Title	0.0593 Ha	643524
Lot 92 Deposited Plan 472234	Fee Simple Title	0.0658 Ha	643525
Lot 93 Deposited Plan 472234	Fee Simple Title	0.0660 Ha	643526



CSD Plan - LT 472234

Created Parcels

Parcels	Parcel Intent	Area	CT Reference
Lot 94 Deposited Plan 472234	Fee Simple Title	0.0654 Ha	643527
Lot 95 Deposited Plan 472234	Fee Simple Title	0.0652 Ha	643528
Lot 96 Deposited Plan 472234	Fee Simple Title	0.0654 Ha	643529
Lot 97 Deposited Plan 472234	Fee Simple Title	0.0582 Ha	643530
Lot 98 Deposited Plan 472234	Fee Simple Title	0.0534 Ha	643531
Lot 104 Deposited Plan 472234	Fee Simple Title	0.0658 Ha	643532
Lot 105 Deposited Plan 472234	Fee Simple Title	0.0657 Ha	643533
Lot 106 Deposited Plan 472234	Fee Simple Title	0.0651 Ha	643534
Lot 107 Deposited Plan 472234	Fee Simple Title	0.0655 Ha	643535
Lot 108 Deposited Plan 472234	Fee Simple Title	0.0652 Ha	643536
Lot 109 Deposited Plan 472234	Fee Simple Title	0.0653 Ha	643537
Lot 110 Deposited Plan 472234	Fee Simple Title	0.0652 Ha	643538
Lot 111 Deposited Plan 472234	Fee Simple Title	0.0652 Ha	643539
Lot 112 Deposited Plan 472234	Fee Simple Title	0.0662 Ha	643540
Lot 500 Deposited Plan 472234	Fee Simple Title	0.0215 Ha	Multiple
Lot 501 Deposited Plan 472234	Fee Simple Title	0.0182 Ha	Multiple
Lot 818 Deposited Plan 472234	Vesting on Deposit for Recreation Reserve (Territorial Authority)	0.0925 Ha	643562
Lot 819 Deposited Plan 472234	Vesting on Deposit for Recreation Reserve (Territorial Authority)	0.1055 Ha	643563
Lot 900 Deposited Plan 472234	Vesting on Deposit for Road	1.1068 Ha	
Lot 905 Deposited Plan 472234	Vesting on Deposit for Road	0.0046 Ha	
Lot 1000 Deposited Plan 472234	Fee Simple Title	1.5744 Ha	643541
Lot 1001 Deposited Plan 472234	Fee Simple Title	14.6236 Ha	643542
Total Area		<u>20.5532 Ha</u>	

Mark and Vector

Survey Number DP 472234
Coordinate System Mount Eden 2000

From	To	Code	Bearing	Adpt Surv	Distance	Adpt Surv
RM 301 DP 428122	IT IV DP 179822	ob2	283°20'05"	A SO 457160	384.71	A SO 457160
IT IV DP 179822	IT 2 SO 444908	ob5	221°24'20"	A SO 444908	161.41	A SO 444908
IT 2 SO 444908	IT 3 SO 444908	ob6	192°12'40"	A SO 444908	183.88	A SO 444908
IT 3 SO 444908	IS VIII DP 67675	ob7	180°03'00"	A SO 457160	24.84	A SO 457160
IS VIII DP 67675	IT VII DP 67675	ob12	197°15'20"	A SO 457160	63.61	A SO 457160
IT VII DP 67675	IT II DP 354443	ob4	88°20'00"	A SO 457160	151.74	A SO 457160
IT II DP 354443	IT IV DP 179822	ob14	1°56'10"	A SO 457160	382.16	A SO 457160
IT 3 SO 444908	RM 3 DP 457312	ob8	19°25'00"	A DP 467806	542.23	A DP 467806
RM 3 DP 457312	IS 3 DP 467806	ob23	95°14'00"	A DP 467806	85.46	A DP 467806
IS 3 DP 467806	RM 4 DP 457312	ob24	96°30'30"	M	105.98	M
RM 4 DP 457312	RM 6 DP 457312	ob25	96°50'00"	M	80.89	M
RM 6 DP 457312	ALP 501 DP 438194	ob26	107°59'20"	M	117.61	M
ALP 501 DP 438194	RM 400 DP 415528	ob28	113°33'00"	A DP 438194	59.78	A DP 438194
RM 400 DP 415528	ALP II SO 364653	ob22	183°20'30"	A DP 438194	115.52	A DP 438194
ALP II SO 364653	RM 300 DP 428122	ob29	196°09'50"	A DP 428122	96.98	A DP 428122
RM 300 DP 428122	RM 301 DP 428122	ob30	268°52'10"	A DP 428122	63.95	A DP 428122
RM 300 DP 428122	ALP I SO 364653	ob31	176°12'40"	A DP 428122	23.82	A DP 428122
ALP I SO 364653	IT XIII DP 94661	ob32	157°24'00"	A DP 415528	130.48	A DP 415528
IT XIII DP 94661	IT IX DP 322954	ob33	209°39'00"	A DP 411139	291.86	A DP 411139
IT IX DP 322954	IS 3 SO 404054	ob34	283°06'05"	A SO 404054	223.62	A SO 404054
IS 3 SO 404054	IS XI DP 67675	ob35	294°09'50"	A SO 404054	91.77	A SO 404054
IS XI DP 67675	IT II DP 354443	ob36	284°53'50"	A DP 354443	59.03	A DP 354443
IT II DP 354443	PEG 82 SO 364653	ob15	99°07'30"	A SO 457160	97.81	A SO 457160
PEG 82 SO 364653	PEG 79 SO 364653	ob16	20°13'00"	A SO 364653	20.14	A SO 364653
PEG 79 SO 364653	PEG 34 SO 457160	ob18	288°06'00"	A SO 457160	247.78	A SO 457160
PEG 34 SO 457160	PEG 26 DP 354443	ob19	194°24'00"	A SO 21437	20.16	A SO 21437
PEG 26 DP 354443	IS VIII DP 67675	ob20	137°07'00"	A SO 457160	6.16	A SO 457160
PEG 82 SO 364653	PEG 81 SO 364653	ob17	108°06'00"	A DP 67675	112.13	A DP 67675
PEG 81 SO 364653	PEG 80 SO 364653	ob37	20°13'00"	A SO 364653	20.14	A SO 364653
PEG 80 SO 364653	PEG 82 DP 357053	ob38	108°06'00"	A SO 21437	60.30	A SO 364653
PEG 82 DP 357053	PEG 72 SO 364653	ob39	108°06'00"	A SO 21437	72.16	A SO 364653
PEG 72 SO 364653	IT IX DP 322954	ob40	143°47'00"	A SO 364653	38.20	A SO 364653
PEG 72 SO 364653	PEG 69 DP 357053	ob41	23°41'00"	A DP 357053	10.41	A DP 357053
PEG 69 DP 357053	PEG 70 DP 357053	ob42	30°07'00"	A DP 357053	112.66	A DP 357053
PEG 70 DP 357053	PEG 71 DP 357053	ob43	28°40'00"	A DP 357053	40.71	A DP 357053
PEG 71 DP 357053	PEG 72 DP 357053	ob44	25°51'00"	A DP 357053	88.07	A DP 357053
PEG 72 DP 357053	PEG 73 DP 357053	ob45	23°07'00"	A DP 357053	11.83	A DP 357053
PEG 73 DP 357053	PEG 74 DP 357053	ob46	9°53'00"	A DP 357053	13.15	A DP 357053

Mark and Vector

Survey Number DP 472234
Coordinate System Mount Eden 2000

From	To	Code	Bearing	Adpt Surv	Distance	Adpt Surv
PEG 74 DP 357053	IT VIII DP 357053	ob47	40°42'00"	A DP 357053	17.65	A DP 357053
IT VIII DP 357053	IT XIII DP 94661	ob49	140°34'00"	A DP 357053	47.07	A DP 357053
PEG 74 DP 357053	PEG 125 DP 428122	ob48	274°18'00"	A DP 428122	74.33	A DP 428122
PEG 125 DP 428122	PEG 124 DP 428122	ob50	321°17'00"	A DP 428122	26.52	A DP 428122
PEG 124 DP 428122	PEG 114 DP 428122	ob51	271°13'00"	A DP 428122	45.78	A DP 428122
PEG 96 DP 428122	PEG 95 DP 428122	ob52	180°24'00"	A DP 428122	6.25	A DP 428122
PEG 95 DP 428122	PEG 103 DP 428122	ob53	270°24'00"	A DP 428122	19.42	A DP 428122
PEG 103 DP 428122	PEG 94 DP 428122	ob54	225°24'00"	A DP 428122	8.49	A DP 428122
PEG 94 DP 428122	PEG 93 DP 428122	ob55	270°23'20"	A DP 428122	114.96	A DP 428122
PEG 93 DP 428122	PEG 92 DP 428122	ob56	270°02'00"	A DP 428122	5.15	A DP 428122
PEG 92 DP 428122	PEG 91 DP 428122	ob57	313°40'00"	A DP 428122	8.33	A DP 428122
PEG 91 DP 428122	PEG 90 DP 428122	ob58	357°39'00"	A DP 428122	46.14	A DP 428122
PEG 301 DP 472234	PEG 302 DP 472234	ob59	40°53'40"	A DP 428122	121.69	A DP 428122
PEG 302 DP 472234	PEG 303 DP 472234	ob60	37°26'00"	A DP 428122	19.24	A DP 428122
PEG 303 DP 472234	PEG 80 DP 428122	ob61	98°28'00"	A DP 428122	169.27	A DP 428122
PEG 80 DP 428122	ALP II SO 364653	ob62	152°52'00"	A DP 428122	30.46	A DP 428122
PEG 80 DP 428122	PEG 26 SO 364653	ob63	8°27'00"	A SO 364653	65.93	A DP 428122
PEG 26 SO 364653	PEG 25 SO 364653	ob64	8°27'00"	A SO 364653	23.90	A SO 364653
PEG 25 SO 364653	PEG 8 DP 438194	ob65	328°12'00"	A SO 364653	6.91	A SO 364653
PEG 8 DP 438194	RM 400 DP 415528	ob66	120°24'00"	A DP 438194	12.87	A DP 438194
PEG 8 DP 438194	PEG 6 DP 438194	ob67	283°00'00"	A DP 438194	58.31	A DP 438194
PEG 6 DP 438194	PEG 348 DP 472234	ob68	282°59'00"	A DP 457312	81.84	C
PEG 348 DP 472234	PEG 245 DP 457312	ob124	282°59'00"	A DP 457312	30.03	C
PEG 245 DP 457312	PEG 339 DP 472234	ob69	282°59'40"	A DP 457312	27.98	C
PEG 339 DP 472234	PEG 347 DP 472234	ob108	282°59'40"	A DP 457312	19.20	C
PEG 347 DP 472234	PEG 346 DP 472234	ob122	282°59'40"	A DP 457312	19.20	C
PEG 346 DP 472234	PEG 345 DP 472234	ob120	282°59'40"	A DP 457312	19.21	C
PEG 345 DP 472234	PEG 344 DP 472234	ob118	282°59'40"	A DP 457312	19.20	C
PEG 344 DP 472234	PEG 247 DP 457312	ob116	282°59'40"	A DP 457312	7.36	C
PEG 247 DP 457312	PEG 343 DP 472234	ob71	281°35'00"	A DP 457312	12.69	C
PEG 343 DP 472234	PEG 248 DP 457312	ob114	281°35'00"	A DP 457312	1.07	C
PEG 248 DP 457312	PEG 249 DP 457312	ob72	278°51'00"	A DP 457312	13.76	A DP 457312
PEG 249 DP 457312	PEG 341 DP 472234	ob73	276°07'00"	A DP 457312	5.50	C
PEG 341 DP 472234	PEG 250 DP 457312	ob112	276°07'00"	A DP 457312	8.26	C
PEG 250 DP 457312	PEG 340 DP 472234	ob74	273°22'00"	A DP 457312	12.28	C
PEG 340 DP 472234	PEG 251 DP 457312	ob110	273°22'00"	A DP 457312	1.48	C
PEG 251 DP 457312	PEG 252 DP 457312	ob75	270°38'00"	A DP 457312	13.76	A DP 457312
PEG 252 DP 457312	PEG 253 DP 457312	ob76	268°45'00"	A DP 457312	5.30	A DP 457312
PEG 253 DP 457312	IS 3 DP 467806	ob77	58°03'00"	A DP 467806	8.81	A DP 467806

Mark and Vector

Survey Number DP 472234
Coordinate System Mount Eden 2000

From	To	Code	Bearing	Adpt Surv	Distance	Adpt Surv
PEG 253 DP 457312	PEG 19 DP 467806	ob78	178°13'00"	A DP 467806	34.00	A DP 467806
PEG 19 DP 467806	UNMK 318 DP 472234	ob79	90°15'00"	A DP 467806	10.54	A DP 467806
UNMK 318 DP 472234	PEG 374 DP 472234	ob80	193°00'00"	A DP 467806	1.00	C
PEG 374 DP 472234	PEG 319 DP 472234	ob479	193°00'00"	A DP 467806	26.92	C
PEG 319 DP 472234	PEG 320 DP 472234	ob82	193°00'00"	A DP 467806	18.00	A DP 467806
PEG 320 DP 472234	PEG 375 DP 472234	ob83	103°00'00"	A DP 467806	13.37	C
PEG 375 DP 472234	UNMK 321 DP 472234	ob480	103°00'00"	A DP 467806	1.00	C
UNMK 321 DP 472234	PEG 376 DP 472234	ob84	148°00'00"	A DP 467806	1.00	C
PEG 376 DP 472234	PEG 322 DP 472234	ob481	148°00'00"	A DP 467806	7.49	C
PEG 322 DP 472234	PEG 323 DP 472234	ob85	193°00'00"	A DP 467806	9.88	A DP 467806
PEG 323 DP 472234	PEG 324 DP 472234	ob86	193°00'00"	A DP 467806	7.12	A DP 467806
PEG 324 DP 472234	PEG 325 DP 472234	ob87	193°00'00"	A DP 467806	12.92	A DP 467806
PEG 325 DP 472234	PEG 326 DP 472234	ob88	193°23'00"	A DP 467806	9.38	A DP 467806
PEG 326 DP 472234	PEG 327 DP 472234	ob89	196°22'00"	A DP 467806	11.76	A DP 467806
PEG 327 DP 472234	PEG 328 DP 472234	ob90	200°05'00"	A DP 467806	11.76	A DP 467806
PEG 328 DP 472234	PEG 329 DP 472234	ob91	291°30'00"	A DP 467806	31.81	A DP 467806
PEG 329 DP 472234	PEG 330 DP 472234	ob92	205°02'00"	A DP 467806	9.39	A DP 467806
PEG 330 DP 472234	PEG 331 DP 472234	ob93	208°04'00"	A DP 467806	7.91	A DP 467806
PEG 331 DP 472234	DISK 332 DP 472234	ob94	301°03'00"	A DP 467806	35.89	A DP 467806
DISK 332 DP 472234	PEG 333 DP 472234	ob96	209°56'00"	A DP 467806	7.41	A DP 467806
PEG 333 DP 472234	PEG 334 DP 472234	ob97	213°41'00"	A DP 467806	7.41	A DP 467806
PEG 334 DP 472234	PEG 349 DP 472234	ob98	215°27'00"	A DP 467806	2.62	C
PEG 349 DP 472234	DISK 335 DP 472234	ob126	215°27'00"	A DP 467806	13.38	C
DISK 335 DP 472234	DISK 336 DP 472234	ob99	305°22'00"	A DP 467806	1.81	A DP 467806
DISK 336 DP 472234	PEG 356 DP 472234	ob101	215°39'00"	A DP 179822	25.36	C
PEG 356 DP 472234	PEG (59) DP 179822	ob161	215°39'00"	A DP 179822	15.90	C
PEG (59) DP 179822	IT IV DP 179822	ob102	226°22'00"	A SO 444908	7.13	A SO 444908
PEG (59) DP 179822	PEG 52 DP 357053	ob103	215°24'20"	A DP 357053	129.00	A DP 357053
PEG 52 DP 357053	IT VII DP 357053	ob104	237°11'00"	A DP 357053	58.03	A DP 357053
IT VII DP 357053	IT IV DP 179822	ob106	41°57'00"	A DP 357053	177.04	A DP 357053
PEG 52 DP 357053	UNMK 370 DP 472234	ob105	227°03'45"	C	56.92	C
UNMK 370 DP 472234	PEG 372 DP 472234	ob476	205°03'30"	C	52.53	C
PEG 372 DP 472234	PEG 373 DP 472234	ob477	183°03'00"	C	89.43	C

Mark and Vector

Survey Number DP 472234
Coordinate System Mount Eden 2000

From	To	Code	Bearing	Adpt Surv	Distance	Adpt Surv
PEG 373 DP 472234	PEG 34 SO 457160	ob478	194°25'30"	C	26.53	C
PEG 348 DP 472234	PEG 350 DP 472234	ob125	237°58'00"	C	8.49	C
PEG 350 DP 472234	PEG 351 DP 472234	ob128	193°00'00"	C	41.01	C
PEG 351 DP 472234	PEG 352 DP 472234	ob129	194°25'00"	C	12.55	C
PEG 352 DP 472234	PEG 353 DP 472234	ob130	198°03'00"	C	11.41	C
PEG 353 DP 472234	PEG 354 DP 472234	ob131	202°14'00"	C	12.58	C
PEG 354 DP 472234	PEG 355 DP 472234	ob132	207°02'00"	C	12.72	C
PEG 355 DP 472234	PEG 303 DP 472234	ob133	211°51'00"	C	12.81	C
PEG 245 DP 457312	PEG 1 DP 472234	ob70	147°53'00"	C	8.50	C
PEG 1 DP 472234	PEG 15 DP 472234	ob134	192°59'00"	C	14.00	C
PEG 15 DP 472234	PEG 16 DP 472234	ob135	193°00'00"	C	19.21	C
PEG 16 DP 472234	PEG 17 DP 472234	ob136	193°00'00"	C	11.74	C
PEG 17 DP 472234	PEG 18 DP 472234	ob137	194°55'00"	C	9.43	C
PEG 18 DP 472234	PEG 19 DP 472234	ob138	199°15'00"	C	11.92	C
PEG 19 DP 472234	PEG 20 DP 472234	ob139	204°06'00"	C	11.92	C
PEG 20 DP 472234	PEG 21 DP 472234	ob140	254°43'00"	C	8.94	C
PEG 21 DP 472234	PEG 22 DP 472234	ob141	302°54'00"	C	20.08	C
PEG 22 DP 472234	PEG 23 DP 472234	ob142	302°53'00"	C	19.99	C
PEG 23 DP 472234	PEG 24 DP 472234	ob144	300°28'00"	C	9.29	C
PEG 24 DP 472234	PEG 25 DP 472234	ob145	296°50'00"	C	4.50	C
PEG 25 DP 472234	PEG 26 DP 472234	ob147	293°31'00"	C	8.10	C
PEG 26 DP 472234	PEG 27 DP 472234	ob149	289°16'00"	C	8.09	C
PEG 27 DP 472234	PEG 28 DP 472234	ob150	285°04'00"	C	7.87	C
PEG 28 DP 472234	PEG 29 DP 472234	ob152	283°00'00"	C	11.34	C
PEG 29 DP 472234	PEG 30 DP 472234	ob153	283°00'00"	C	19.20	C
PEG 30 DP 472234	PEG 31 DP 472234	ob155	282°59'00"	C	19.40	C
PEG 31 DP 472234	PEG 32 DP 472234	ob157	283°00'00"	C	18.00	C
PEG 32 DP 472234	PEG 319 DP 472234	ob159	282°59'00"	C	17.99	C
PEG 356 DP 472234	PEG 357 DP 472234	ob162	125°42'00"	C	1.83	C
PEG 357 DP 472234	PEG 358 DP 472234	ob163	80°28'00"	C	8.85	C
PEG 358 DP 472234	PEG 365 DP 472234	ob165	125°28'00"	C	26.74	C
PEG 365 DP 472234	PEG 359 DP 472234	ob174	125°28'00"	C	28.75	C
PEG 359 DP 472234	PEG 360 DP 472234	ob166	170°28'00"	C	8.85	C
PEG 360 DP 472234	PEG 361 DP 472234	ob167	123°01'00"	C	18.02	C
PEG 361 DP 472234	PEG 362 DP 472234	ob169	77°54'00"	C	9.28	C
PEG 362 DP 472234	PEG 366 DP 472234	ob171	120°20'00"	C	23.39	C
PEG 366 DP 472234	PEG 367 DP 472234	ob175	120°20'00"	C	22.12	C
PEG 367 DP 472234	PEG 363 DP 472234	ob176	120°20'00"	C	21.80	C
PEG 363 DP 472234	PEG 364 DP 472234	ob172	163°10'00"	C	8.49	C

Mark and Vector

Survey Number DP 472234
Coordinate System Mount Eden 2000

From	To	Code	Bearing	Adpt Surv	Distance	Adpt Surv
PEG 364 DP 472234	PEG 33 DP 472234	ob173	117°12'00"	C	18.01	C
DISK 335 DP 472234	DISK 35 DP 472234	ob100	172°18'00"	C	9.07	C
DISK 35 DP 472234	PEG 42 DP 472234	ob177	125°28'00"	C	28.47	C
PEG 42 DP 472234	DISK 36 DP 472234	ob184	125°28'00"	C	27.53	C
DISK 36 DP 472234	DISK 37 DP 472234	ob178	80°30'00"	C	8.12	C
DISK 37 DP 472234	PEG 38 DP 472234	ob179	35°29'00"	C	14.88	C
PEG 38 DP 472234	PEG 39 DP 472234	ob180	34°10'00"	C	11.82	C
PEG 39 DP 472234	PEG 40 DP 472234	ob181	30°48'00"	C	9.86	C
PEG 40 DP 472234	PEG 41 DP 472234	ob182	27°24'00"	C	11.50	C
PEG 41 DP 472234	PEG 328 DP 472234	ob183	23°55'00"	C	11.50	C
PEG 361 DP 472234	PEG 43 DP 472234	ob170	35°28'00"	C	24.63	C
PEG 43 DP 472234	PEG 44 DP 472234	ob186	35°20'00"	C	20.41	C
PEG 44 DP 472234	PEG 45 DP 472234	ob188	32°53'00"	C	9.16	C
PEG 45 DP 472234	PEG 46 DP 472234	ob190	30°14'00"	C	9.15	C
PEG 46 DP 472234	PEG 47 DP 472234	ob191	27°37'00"	C	9.08	C
PEG 47 DP 472234	PEG 48 DP 472234	ob193	24°59'00"	C	9.09	C
PEG 48 DP 472234	PEG 49 DP 472234	ob194	21°09'00"	C	17.63	C
PEG 49 DP 472234	PEG 50 DP 472234	ob196	17°13'00"	C	9.71	C
PEG 50 DP 472234	PEG 51 DP 472234	ob198	14°24'00"	C	9.72	C
PEG 51 DP 472234	PEG 52 DP 472234	ob199	13°00'00"	C	19.10	C
PEG 52 DP 472234	PEG 53 DP 472234	ob201	13°04'00"	C	15.52	C
PEG 53 DP 472234	PEG 54 DP 472234	ob203	57°59'00"	C	8.46	C
PEG 54 DP 472234	PEG 98 DP 472234	ob204	103°00'00"	C	23.50	C
PEG 98 DP 472234	PEG 55 DP 472234	ob254	103°00'00"	C	18.50	C
PEG 55 DP 472234	PEG 56 DP 472234	ob205	106°12'00"	C	9.32	C
PEG 56 DP 472234	PEG 57 DP 472234	ob206	112°04'00"	C	9.32	C
PEG 57 DP 472234	PEG 58 DP 472234	ob207	116°59'00"	C	6.27	C
PEG 58 DP 472234	PEG 59 DP 472234	ob208	120°55'00"	C	6.27	C
PEG 59 DP 472234	PEG 99 DP 472234	ob209	122°54'00"	C	13.55	C
PEG 99 DP 472234	PEG 60 DP 472234	ob255	122°54'00"	C	26.52	C
PEG 60 DP 472234	PEG 61 DP 472234	ob210	171°08'00"	C	8.57	C
PEG 61 DP 472234	PEG 62 DP 472234	ob211	219°54'00"	C	16.52	C
PEG 62 DP 472234	PEG 91 DP 472234	ob212	220°53'40"	C	18.53	C
PEG 91 DP 472234	PEG 92 DP 472234	ob246	220°53'40"	C	18.70	C
PEG 92 DP 472234	PEG 93 DP 472234	ob247	220°53'40"	C	5.00	C
PEG 93 DP 472234	PEG 94 DP 472234	ob248	220°53'40"	C	21.21	C
PEG 94 DP 472234	PEG 95 DP 472234	ob249	220°53'40"	C	18.90	C
PEG 95 DP 472234	PEG 96 DP 472234	ob250	220°53'40"	C	4.00	C
PEG 96 DP 472234	PEG 97 DP 472234	ob252	220°53'40"	C	17.80	C

Mark and Vector

Survey Number DP 472234
Coordinate System Mount Eden 2000

From	To	Code	Bearing	Adpt Surv	Distance	Adpt Surv
PEG 97 DP 472234	PEG 63 DP 472234	ob253	220°53'40" C		5.08 C	
PEG 63 DP 472234	PEG 64 DP 472234	ob213	219°20'00" C		8.85 C	
PEG 64 DP 472234	PEG 65 DP 472234	ob214	216°01'00" C		9.69 C	
PEG 65 DP 472234	PEG 368 DP 472234	ob215	212°27'00" C		11.76 C	
PEG 368 DP 472234	PEG 364 DP 472234	ob245	207°37'00" C		11.76 C	
PEG 43 DP 472234	PEG 66 DP 472234	ob187	166°56'00" C		7.94 C	
PEG 66 DP 472234	PEG 67 DP 472234	ob216	120°20'00" C		20.74 C	
PEG 67 DP 472234	PEG 68 DP 472234	ob217	120°20'00" C		25.65 C	
PEG 68 DP 472234	PEG 69 DP 472234	ob219	120°20'00" C		20.10 C	
PEG 69 DP 472234	PEG 65 DP 472234	ob221	79°47'00" C		8.04 C	
PEG 24 DP 472234	PEG 70 DP 472234	ob146	25°39'00" C		13.59 C	
PEG 70 DP 472234	PEG 71 DP 472234	ob222	66°20'00" C		3.03 C	
PEG 71 DP 472234	PEG 72 DP 472234	ob223	107°02'00" C		18.96 C	
PEG 72 DP 472234	PEG 89 DP 472234	ob224	107°02'00" C		11.40 C	
PEG 89 DP 472234	PEG 18 DP 472234	ob243	107°02'00" C		22.37 C	
PEG 339 DP 472234	PEG 73 DP 472234	ob109	193°00'00" C		20.00 C	
PEG 73 DP 472234	PEG 75 DP 472234	ob225	193°00'00" C		14.00 C	
PEG 75 DP 472234	PEG 74 DP 472234	ob229	193°00'00" C		5.21 C	
PEG 74 DP 472234	PEG 72 DP 472234	ob227	193°00'00" C		18.79 C	
UNMK 318 DP 472234	PEG 76 DP 472234	ob81	90°12'00" C		7.57 C	
PEG 76 DP 472234	PEG 77 DP 472234	ob230	94°21'00" C		10.73 C	
PEG 77 DP 472234	PEG 78 DP 472234	ob231	94°21'00" C		7.39 C	
PEG 78 DP 472234	PEG 79 DP 472234	ob232	98°25'00" C		10.73 C	
PEG 79 DP 472234	PEG 80 DP 472234	ob233	98°25'00" C		7.19 C	
PEG 80 DP 472234	PEG 81 DP 472234	ob234	101°48'00" C		12.24 C	
PEG 81 DP 472234	PEG 82 DP 472234	ob235	102°59'30" C		6.29 C	
PEG 82 DP 472234	PEG 83 DP 472234	ob236	102°59'30" C		12.91 C	
PEG 83 DP 472234	PEG 84 DP 472234	ob237	102°59'30" C		6.29 C	
PEG 84 DP 472234	PEG 85 DP 472234	ob238	102°59'30" C		12.92 C	
PEG 85 DP 472234	PEG 86 DP 472234	ob239	102°59'30" C		6.29 C	
PEG 86 DP 472234	PEG 87 DP 472234	ob240	102°59'30" C		12.95 C	
PEG 87 DP 472234	PEG 88 DP 472234	ob241	102°59'30" C		6.25 C	
PEG 88 DP 472234	PEG 75 DP 472234	ob242	102°59'30" C		19.20 C	
PEG 340 DP 472234	PEG 76 DP 472234	ob111	182°18'00" C		33.96 C	
PEG 341 DP 472234	PEG 78 DP 472234	ob113	186°23'00" C		33.92 C	
PEG 343 DP 472234	PEG 80 DP 472234	ob115	190°26'00" C		33.98 C	
PEG 344 DP 472234	PEG 82 DP 472234	ob117	193°00'00" C		34.00 C	
PEG 345 DP 472234	PEG 84 DP 472234	ob119	193°00'00" C		34.00 C	

Mark and Vector

Survey Number DP 472234
Coordinate System Mount Eden 2000

From	To	Code	Bearing	Adpt Surv	Distance	Adpt Surv
PEG 346 DP 472234	PEG 86 DP 472234	ob121	193°00'00"	C	34.00	C
PEG 347 DP 472234	PEG 88 DP 472234	ob123	193°00'00"	C	34.00	C
PEG 73 DP 472234	PEG 15 DP 472234	ob226	103°00'00"	C	34.01	C
PEG 74 DP 472234	PEG 16 DP 472234	ob228	103°00'00"	C	34.00	C
PEG 22 DP 472234	PEG 89 DP 472234	ob143	32°38'00"	C	23.91	C
PEG 25 DP 472234	PEG 90 DP 472234	ob148	25°39'00"	C	14.81	C
PEG 90 DP 472234	PEG 87 DP 472234	ob244	13°00'00"	C	22.20	C
PEG 27 DP 472234	PEG 85 DP 472234	ob151	13°00'00"	C	34.29	C
PEG 29 DP 472234	PEG 83 DP 472234	ob154	13°00'00"	C	34.00	C
PEG 30 DP 472234	PEG 81 DP 472234	ob156	13°00'00"	C	34.00	C
PEG 31 DP 472234	PEG 79 DP 472234	ob158	13°00'00"	C	33.18	C
PEG 32 DP 472234	PEG 77 DP 472234	ob160	13°00'00"	C	31.21	C
PEG 67 DP 472234	PEG 100 DP 472234	ob218	35°28'00"	C	26.21	C
PEG 100 DP 472234	PEG 101 DP 472234	ob269	35°29'00"	C	5.81	C
PEG 101 DP 472234	PEG 102 DP 472234	ob256	33°32'00"	C	12.54	C
PEG 102 DP 472234	PEG 103 DP 472234	ob257	30°38'00"	C	10.00	C
PEG 103 DP 472234	PEG 104 DP 472234	ob258	27°14'00"	C	12.39	C
PEG 104 DP 472234	PEG 105 DP 472234	ob260	23°43'00"	C	12.18	C
PEG 105 DP 472234	DISK 106 DP 472234	ob261	20°29'00"	C	9.92	C
DISK 106 DP 472234	DISK 107 DP 472234	ob263	18°04'00"	C	8.11	C
DISK 107 DP 472234	PEG 108 DP 472234	ob264	15°14'00"	C	11.33	C
PEG 108 DP 472234	PEG 109 DP 472234	ob266	13°00'00"	C	11.09	C
PEG 109 DP 472234	PEG 110 DP 472234	ob267	13°00'00"	C	8.00	C
PEG 110 DP 472234	PEG 98 DP 472234	ob271	13°00'00"	C	21.51	C
PEG 52 DP 472234	PEG 110 DP 472234	ob202	103°01'00"	C	29.50	C
PEG 51 DP 472234	PEG 108 DP 472234	ob200	103°00'00"	C	29.50	C
PEG 49 DP 472234	DISK 106 DP 472234	ob197	103°00'00"	C	29.29	C
PEG 48 DP 472234	PEG 104 DP 472234	ob195	111°45'00"	C	28.57	C
PEG 46 DP 472234	PEG 102 DP 472234	ob192	120°19'00"	C	27.59	C
PEG 44 DP 472234	PEG 100 DP 472234	ob189	120°20'00"	C	26.76	C
PEG 360 DP 472234	DISK 37 DP 472234	ob168	35°28'00"	C	24.50	C
PEG 349 DP 472234	DISK 369 DP 472234	ob127	124°56'30"	C	34.76	C
DISK 369 DP 472234	PEG 38 DP 472234	ob272	124°56'30"	C	33.21	C
PEG 42 DP 472234	DISK 369 DP 472234	ob185	35°41'00"	C	20.31	C
PEG 331 DP 472234	DISK 371 DP 472234	ob95	208°04'00"	C	0.44	C
DISK 371 DP 472234	DISK 369 DP 472234	ob302	215°51'00"	C	19.41	C
PEG 100 DP 472234	PEG 111 DP 472234	ob270	120°20'00"	C	15.77	C
PEG 111 DP 472234	PEG 112 DP 472234	ob273	210°20'00"	C	2.50	C
PEG 112 DP 472234	PEG 113 DP 472234	ob275	120°20'00"	C	9.24	C

Mark and Vector

Survey Number DP 472234
Coordinate System Mount Eden 2000

From	To	Code	Bearing	Adpt Surv	Distance	Adpt Surv
PEG 113 DP 472234	PEG 63 DP 472234	ob276	120°20'00"	C	26.85	C
DISK 371 DP 472234	PEG 40 DP 472234	ob303	120°56'00"	C	32.10	C
PEG 68 DP 472234	PEG 113 DP 472234	ob220	34°28'00"	C	23.67	C
PEG 111 DP 472234	PEG 115 DP 472234	ob274	30°20'00"	C	2.50	C
PEG 115 DP 472234	PEG 116 DP 472234	ob277	120°20'00"	C	7.18	C
PEG 116 DP 472234	PEG 97 DP 472234	ob278	120°20'00"	C	29.85	C
PEG 103 DP 472234	PEG 117 DP 472234	ob259	128°58'00"	C	25.43	C
PEG 117 DP 472234	PEG 96 DP 472234	ob280	128°58'00"	C	29.98	C
PEG 116 DP 472234	PEG 117 DP 472234	ob279	39°18'00"	C	22.27	C
PEG 105 DP 472234	PEG 118 DP 472234	ob262	125°57'00"	C	28.11	C
PEG 118 DP 472234	PEG 119 DP 472234	ob281	133°08'00"	C	2.24	C
PEG 119 DP 472234	PEG 94 DP 472234	ob282	133°08'00"	C	31.68	C
PEG 95 DP 472234	PEG 120 DP 472234	ob251	308°58'00"	C	28.40	C
PEG 120 DP 472234	PEG 121 DP 472234	ob284	351°35'00"	C	4.42	C
PEG 121 DP 472234	PEG 118 DP 472234	ob285	34°10'00"	C	18.43	C
DISK 107 DP 472234	PEG 122 DP 472234	ob265	118°37'00"	C	26.08	C
PEG 122 DP 472234	PEG 123 DP 472234	ob286	130°55'00"	C	11.36	C
PEG 123 DP 472234	PEG 93 DP 472234	ob288	130°55'00"	C	31.66	C
PEG 119 DP 472234	PEG 123 DP 472234	ob283	40°53'00"	C	19.98	C
PEG 122 DP 472234	PEG 124 DP 472234	ob287	40°55'00"	C	5.00	C
PEG 124 DP 472234	PEG 125 DP 472234	ob289	130°55'00"	C	13.65	C
PEG 125 DP 472234	PEG 92 DP 472234	ob290	130°55'00"	C	29.37	C
PEG 125 DP 472234	PEG 126 DP 472234	ob291	37°04'00"	C	18.74	C
PEG 126 DP 472234	PEG 127 DP 472234	ob292	37°04'00"	C	13.20	C
PEG 127 DP 472234	PEG 130 DP 472234	ob294	37°04'00"	C	5.23	C
PEG 130 DP 472234	PEG 99 DP 472234	ob304	37°04'00"	C	18.54	C
PEG 126 DP 472234	PEG 91 DP 472234	ob293	130°55'00"	C	30.62	C
PEG 130 DP 472234	PEG 62 DP 472234	ob305	130°39'00"	C	31.85	C
PEG 109 DP 472234	PEG 129 DP 472234	ob268	102°59'00"	C	18.50	C
PEG 129 DP 472234	PEG 131 DP 472234	ob295	104°45'00"	C	7.12	C
PEG 131 DP 472234	PEG 133 DP 472234	ob297	107°23'00"	C	11.41	C
PEG 133 DP 472234	PEG 127 DP 472234	ob299	107°23'00"	C	15.16	C
PEG 131 DP 472234	PEG 132 DP 472234	ob298	198°47'00"	C	20.10	C
PEG 132 DP 472234	PEG 124 DP 472234	ob301	157°29'00"	C	5.90	C
PEG 129 DP 472234	PEG 55 DP 472234	ob296	13°00'00"	C	29.50	C
PEG 133 DP 472234	PEG 57 DP 472234	ob300	13°02'00"	C	28.60	C
PEG 357 DP 472234	DISK 335 DP 472234	ob164	35°36'00"	C	25.37	C
RM 6 DP 457312	RM 310 DP 472234	ob27	191°44'00"	M	120.74	M
RM 310 DP 472234	RM 311 DP 472234	ob307	221°47'00"	M	171.37	M

Mark and Vector

Survey Number DP 472234
Coordinate System Mount Eden 2000

From	To	Code	Bearing	Adpt Surv	Distance	Adpt Surv
RM 311 DP 472234	RM 312 DP 472234	ob360	329°14'30"	M	99.02	M
RM 312 DP 472234	RM 313 DP 472234	ob392	15°34'45"	M	108.50	M
RM 313 DP 472234	RM 753 DP 472234	ob430	251°31'00"	M	102.22	M
RM 753 DP 472234	RM 3 DP 457312	ob475	353°29'15"	M	118.99	M
RM 313 DP 472234	PEG 253 DP 457312	ob431	335°53'30"	M	80.37	M
RM 313 DP 472234	PEG 252 DP 457312	ob432	339°28'00"	M	78.47	M
RM 313 DP 472234	PEG 251 DP 457312	ob433	349°22'00"	M	74.61	M
RM 313 DP 472234	PEG 340 DP 472234	ob434	350°28'30"	M	74.26	M
RM 313 DP 472234	PEG 250 DP 457312	ob435	359°58'30"	M	72.52	M
RM 313 DP 472234	PEG 341 DP 472234	ob436	6°31'00"	M	72.10	M
RM 313 DP 472234	PEG 249 DP 457312	ob437	10°52'30"	M	72.35	M
RM 313 DP 472234	PEG 248 DP 457312	ob438	21°34'00"	M	74.13	M
RM 313 DP 472234	PEG 343 DP 472234	ob439	22°22'30"	M	74.32	M
RM 313 DP 472234	PEG 247 DP 457312	ob440	31°36'30"	M	77.70	M
RM 313 DP 472234	PEG 344 DP 472234	ob441	36°35'30"	M	80.36	M
RM 313 DP 472234	PEG 82 DP 472234	ob442	52°03'00"	M	51.04	M
RM 313 DP 472234	PEG 81 DP 472234	ob443	46°08'00"	M	47.33	M
RM 313 DP 472234	PEG 80 DP 472234	ob444	32°06'00"	M	41.68	M
RM 313 DP 472234	PEG 79 DP 472234	ob445	22°28'00"	M	39.34	M
RM 313 DP 472234	PEG 78 DP 472234	ob446	6°38'00"	M	38.19	M
RM 313 DP 472234	PEG 77 DP 472234	ob447	355°37'00"	M	38.60	M
RM 313 DP 472234	PEG 76 DP 472234	ob448	340°51'00"	M	41.61	M
RM 313 DP 472234	PEG 374 DP 472234	ob449	330°47'00"	M	43.94	M
RM 313 DP 472234	PEG 19 DP 467806	ob450	321°06'30"	M	50.59	M
RM 313 DP 472234	PEG 319 DP 472234	ob451	293°47'00"	M	30.05	M
RM 313 DP 472234	PEG 32 DP 472234	ob452	309°02'00"	M	12.83	M
RM 313 DP 472234	PEG 31 DP 472234	ob453	61°57'00"	M	8.58	M
RM 313 DP 472234	PEG 30 DP 472234	ob454	90°42'00"	M	26.48	M
RM 313 DP 472234	PEG 29 DP 472234	ob455	95°52'00"	M	45.42	M
RM 313 DP 472234	PEG 28 DP 472234	ob456	97°17'30"	M	56.69	M
RM 313 DP 472234	PEG 55 DP 472234	ob457	115°16'00"	M	58.17	M
RM 313 DP 472234	PEG 98 DP 472234	ob458	120°52'00"	M	40.28	M
RM 313 DP 472234	PEG 54 DP 472234	ob459	142°47'00"	M	19.31	M
RM 313 DP 472234	PEG 53 DP 472234	ob460	167°13'00"	M	20.37	M
RM 313 DP 472234	PEG 52 DP 472234	ob461	178°22'00"	M	35.00	M
RM 313 DP 472234	PEG 51 DP 472234	ob462	183°31'30"	M	53.70	M
RM 313 DP 472234	PEG 50 DP 472234	ob463	185°11'00"	M	63.27	M
RM 313 DP 472234	PEG 49 DP 472234	ob464	186°46'30"	M	72.79	M
RM 313 DP 472234	PEG 327 DP 472234	ob465	201°06'30"	M	70.12	M

Mark and Vector

Survey Number DP 472234
Coordinate System Mount Eden 2000

From	To	Code	Bearing	Adpt Surv	Distance	Adpt Surv
RM 313 DP 472234	PEG 326 DP 472234	ob466	202°04'00"	M	58.41	M
RM 313 DP 472234	PEG 325 DP 472234	ob467	203°43'00"	M	49.16	M
RM 313 DP 472234	PEG 324 DP 472234	ob468	207°29'00"	M	36.54	M
RM 313 DP 472234	PEG 323 DP 472234	ob469	210°56'00"	M	29.70	M
RM 313 DP 472234	PEG 322 DP 472234	ob470	219°27'00"	M	20.53	M
RM 313 DP 472234	PEG 375 DP 472234	ob471	245°32'00"	M	20.34	M
RM 313 DP 472234	PEG 376 DP 472234	ob472	240°49'00"	M	19.48	M
RM 313 DP 472234	PEG 320 DP 472234	ob473	260°15'00"	M	32.01	M
RM 310 DP 472234	PEG 245 DP 457312	ob308	7°55'20"	M	103.77	M
RM 310 DP 472234	PEG 348 DP 472234	ob309	24°24'00"	M	105.45	M
RM 310 DP 472234	PEG 350 DP 472234	ob310	21°40'00"	M	98.49	M
RM 310 DP 472234	PEG 351 DP 472234	ob311	27°45'30"	M	58.28	M
RM 310 DP 472234	PEG 352 DP 472234	ob312	31°21'00"	M	46.16	M
RM 310 DP 472234	PEG 353 DP 472234	ob313	35°38'00"	M	35.15	M
RM 310 DP 472234	PEG 354 DP 472234	ob314	42°53'00"	M	23.10	M
RM 310 DP 472234	PEG 355 DP 472234	ob315	60°38'00"	M	11.41	M
RM 310 DP 472234	PEG 303 DP 472234	ob316	148°58'00"	M	6.17	M
RM 310 DP 472234	PEG 93 DP 472234	ob317	229°09'00"	M	76.45	M
RM 310 DP 472234	PEG 92 DP 472234	ob318	229°43'30"	M	71.51	M
RM 310 DP 472234	PEG 91 DP 472234	ob319	232°49'30"	M	53.11	M
RM 310 DP 472234	PEG 62 DP 472234	ob320	239°04'00"	M	35.18	M
RM 310 DP 472234	PEG 61 DP 472234	ob321	254°33'00"	M	20.32	M
RM 310 DP 472234	PEG 60 DP 472234	ob322	278°19'00"	M	21.13	M
RM 310 DP 472234	PEG 99 DP 472234	ob323	292°01'00"	M	46.57	M
RM 310 DP 472234	PEG 59 DP 472234	ob324	294°28'00"	M	59.93	M
RM 310 DP 472234	PEG 58 DP 472234	ob325	295°04'30"	M	66.17	M
RM 310 DP 472234	PEG 57 DP 472234	ob326	295°14'30"	M	72.43	M
RM 310 DP 472234	PEG 133 DP 472234	ob327	272°24'30"	M	72.03	M
RM 310 DP 472234	PEG 130 DP 472234	ob328	272°48'30"	M	54.41	M
RM 310 DP 472234	PEG 127 DP 472234	ob329	268°30'00"	M	57.52	M
RM 310 DP 472234	PEG 126 DP 472234	ob330	259°34'30"	M	66.55	M
RM 310 DP 472234	PEG 125 DP 472234	ob331	250°37'30"	M	81.36	M
RM 310 DP 472234	PEG 123 DP 472234	ob332	250°18'00"	M	86.84	M
RM 310 DP 472234	PEG 24 DP 472234	ob333	310°13'00"	M	69.14	M
RM 310 DP 472234	PEG 23 DP 472234	ob334	311°43'30"	M	60.01	M
RM 310 DP 472234	PEG 22 DP 472234	ob335	316°05'00"	M	40.37	M
RM 310 DP 472234	PEG 21 DP 472234	ob336	328°30'00"	M	21.32	M
RM 310 DP 472234	PEG 20 DP 472234	ob337	353°01'00"	M	20.69	M
RM 310 DP 472234	PEG 19 DP 472234	ob338	4°17'00"	M	31.50	M

Mark and Vector

Survey Number DP 472234
Coordinate System Mount Eden 2000

From	To	Code	Bearing	Adpt Surv	Distance	Adpt Surv
RM 310 DP 472234	PEG 18 DP 472234	ob339	8°23'00"	M	43.13	M
RM 310 DP 472234	PEG 17 DP 472234	ob340	9°33'00"	M	52.51	M
RM 310 DP 472234	PEG 16 DP 472234	ob341	10°11'00"	M	64.23	M
RM 310 DP 472234	PEG 15 DP 472234	ob342	10°50'00"	M	83.42	M
RM 310 DP 472234	PEG 1 DP 472234	ob343	11°08'30"	M	97.41	M
RM 310 DP 472234	PEG 89 DP 472234	ob344	342°56'30"	M	51.49	M
RM 310 DP 472234	PEG 72 DP 472234	ob345	333°40'30"	M	58.64	M
RM 310 DP 472234	PEG 71 DP 472234	ob346	322°47'00"	M	72.97	M
RM 310 DP 472234	PEG 70 DP 472234	ob347	320°29'30"	M	73.74	M
RM 312 DP 472234	DISK 332 DP 472234	ob393	302°04'30"	M	80.47	M
RM 312 DP 472234	PEG 333 DP 472234	ob394	296°48'00"	M	80.53	M
RM 312 DP 472234	PEG 334 DP 472234	ob395	291°38'00"	M	81.75	M
RM 312 DP 472234	PEG 349 DP 472234	ob396	289°52'00"	M	82.41	M
RM 312 DP 472234	DISK 335 DP 472234	ob397	281°20'30"	M	86.97	M
RM 312 DP 472234	DISK 336 DP 472234	ob398	281°49'00"	M	88.62	M
RM 312 DP 472234	PEG 356 DP 472234	ob399	268°36'40"	M	101.55	M
RM 312 DP 472234	PEG 357 DP 472234	ob400	267°59'00"	M	100.10	M
RM 312 DP 472234	PEG 358 DP 472234	ob401	268°42'30"	M	91.33	M
RM 312 DP 472234	PEG 365 DP 472234	ob402	255°49'00"	M	71.72	M
RM 312 DP 472234	PEG 359 DP 472234	ob403	233°23'30"	M	57.45	M
RM 312 DP 472234	PEG 360 DP 472234	ob404	226°05'00"	M	61.98	M
RM 312 DP 472234	PEG 361 DP 472234	ob405	209°13'30"	M	60.51	M
RM 312 DP 472234	PEG 362 DP 472234	ob406	201°55'00"	M	54.82	M
RM 312 DP 472234	PEG 366 DP 472234	ob407	180°15'30"	M	62.67	M
RM 312 DP 472234	PEG 67 DP 472234	ob408	175°00'30"	M	51.15	M
RM 312 DP 472234	PEG 48 DP 472234	ob409	41°56'00"	M	21.22	M
RM 312 DP 472234	PEG 46 DP 472234	ob410	94°38'00"	M	6.16	M
RM 312 DP 472234	PEG 45 DP 472234	ob411	169°42'00"	M	8.54	M
RM 312 DP 472234	PEG 44 DP 472234	ob412	192°05'00"	M	16.46	M
RM 312 DP 472234	PEG 43 DP 472234	ob413	204°58'00"	M	36.12	M
RM 312 DP 472234	PEG 66 DP 472234	ob414	198°23'00"	M	42.66	M
RM 312 DP 472234	DISK 35 DP 472234	ob415	275°31'00"	M	84.44	M
RM 312 DP 472234	PEG 42 DP 472234	ob416	262°08'30"	M	61.44	M
RM 312 DP 472234	DISK 36 DP 472234	ob417	237°37'00"	M	45.52	M
RM 312 DP 472234	DISK 37 DP 472234	ob418	232°53'00"	M	38.17	M
RM 312 DP 472234	PEG 38 DP 472234	ob419	243°23'00"	M	24.38	M
RM 312 DP 472234	PEG 39 DP 472234	ob420	265°42'00"	M	15.20	M
RM 312 DP 472234	PEG 40 DP 472234	ob421	305°56'00"	M	12.49	M
RM 312 DP 472234	PEG 41 DP 472234	ob422	344°39'00"	M	18.19	M

Mark and Vector

Survey Number DP 472234
Coordinate System Mount Eden 2000

From	To	Code	Bearing	Adpt Surv	Distance	Adpt Surv
RM 312 DP 472234	PEG 328 DP 472234	ob423	359°41'00"	M	28.05	M
RM 312 DP 472234	PEG 329 DP 472234	ob424	323°10'00"	M	49.61	M
RM 312 DP 472234	PEG 330 DP 472234	ob425	312°47'00"	M	45.94	M
RM 312 DP 472234	PEG 331 DP 472234	ob426	302°54'00"	M	44.59	M
RM 312 DP 472234	DISK 371 DP 472234	ob427	302°20'00"	M	44.56	M
RM 312 DP 472234	DISK 369 DP 472234	ob428	279°23'00"	M	49.68	M
RM 311 DP 472234	PEG 301 DP 472234	ob361	59°39'00"	M	30.15	M
RM 311 DP 472234	PEG 34 DP 472234	ob362	97°55'00"	M	13.47	M
RM 311 DP 472234	PEG 33 DP 472234	ob363	161°18'00"	M	17.02	M
RM 311 DP 472234	PEG 364 DP 472234	ob364	233°14'00"	M	13.18	M
RM 311 DP 472234	PEG 65 DP 472234	ob365	5°31'00"	M	12.51	M
RM 311 DP 472234	PEG 64 DP 472234	ob366	18°47'00"	M	21.43	M
RM 311 DP 472234	PEG 63 DP 472234	ob367	24°45'00"	M	29.88	M
RM 311 DP 472234	PEG 97 DP 472234	ob368	27°04'00"	M	34.79	M
RM 311 DP 472234	PEG 96 DP 472234	ob369	31°44'30"	M	52.25	M
RM 311 DP 472234	PEG 95 DP 472234	ob370	32°23'30"	M	56.20	M
RM 311 DP 472234	PEG 94 DP 472234	ob371	34°31'30"	M	74.95	M
RM 311 DP 472234	PEG 119 DP 472234	ob372	13°04'00"	M	85.62	M
RM 311 DP 472234	PEG 118 DP 472234	ob373	11°47'30"	M	86.77	M
RM 311 DP 472234	PEG 121 DP 472234	ob374	6°02'30"	M	70.08	M
RM 311 DP 472234	PEG 120 DP 472234	ob375	7°00'30"	M	65.81	M
RM 311 DP 472234	PEG 117 DP 472234	ob376	3°46'30"	M	63.42	M
RM 311 DP 472234	PEG 116 DP 472234	ob377	347°51'00"	M	47.11	M
RM 311 DP 472234	PEG 115 DP 472234	ob378	342°01'30"	M	52.23	M
RM 311 DP 472234	PEG 111 DP 472234	ob379	339°54'30"	M	50.60	M
RM 311 DP 472234	PEG 112 DP 472234	ob380	337°40'00"	M	49.04	M
RM 311 DP 472234	PEG 113 DP 472234	ob381	345°19'00"	M	42.07	M
RM 311 DP 472234	PEG 68 DP 472234	ob382	311°22'00"	M	32.05	M
RM 311 DP 472234	PEG 69 DP 472234	ob383	328°41'00"	M	12.91	M
RM 311 DP 472234	PEG 363 DP 472234	ob384	271°03'00"	M	13.02	M
RM 311 DP 472234	PEG 367 DP 472234	ob385	289°28'00"	M	33.76	M
RM 310 DP 472234	RM 314 DP 472234	ob306	304°42'00"	M	75.29	M
RM 314 DP 472234	RM 313 DP 472234	ob482	284°24'30"	M	76.21	M
RM 314 DP 472234	RM 4 DP 457312	ob483	4°08'00"	M	85.19	M
RM 312 DP 472234	PEG 47 DP 472234	ob429	53°52'00"	M	12.80	M
RM 310 DP 472234	PEG 56 DP 472234	ob348	294°53'00"	M	81.74	M
RM 310 DP 472234	PEG 131 DP 472234	ob349	274°26'30"	M	83.11	M
RM 310 DP 472234	PEG 129 DP 472234	ob350	275°15'00"	M	90.12	M
RM 310 DP 472234	PEG 110 DP 472234	ob351	280°47'20"	M	107.88	M

Mark and Vector

Survey Number DP 472234
Coordinate System Mount Eden 2000

From	To	Code	Bearing	Adpt Surv	Distance	Adpt Surv
RM 310 DP 472234	PEG 109 DP 472234	ob352	276°33'40"	M	108.48	M
RM 310 DP 472234	PEG 108 DP 472234	ob353	270°49'40"	M	110.27	M
RM 310 DP 472234	DISK 107 DP 472234	ob354	265°17'00"	M	113.62	M
RM 310 DP 472234	PEG 132 DP 472234	ob355	261°58'00"	M	90.21	M
RM 310 DP 472234	PEG 124 DP 472234	ob356	258°17'00"	M	88.92	M
RM 310 DP 472234	PEG 122 DP 472234	ob357	256°25'00"	M	92.94	M
RM 311 DP 472234	PEG 103 DP 472234	ob386	348°52'00"	M	80.79	M
RM 311 DP 472234	PEG 102 DP 472234	ob387	343°40'30"	M	73.64	M
RM 311 DP 472234	PEG 101 DP 472234	ob388	335°21'30"	M	66.25	M
RM 311 DP 472234	PEG 100 DP 472234	ob389	330°48'30"	M	63.55	M
RM 311 DP 472234	PEG 105 DP 472234	ob390	357°09'40"	M	101.57	M
RM 311 DP 472234	DISK 106 DP 472234	ob391	359°11'40"	M	110.75	M
RM 314 DP 472234	PEG 27 DP 472234	ob486	314°15'00"	M	13.93	M
RM 314 DP 472234	PEG 26 DP 472234	ob485	341°38'00"	M	7.43	M
RM 314 DP 472234	PEG 25 DP 472234	ob487	53°06'00"	M	6.36	M
RM 314 DP 472234	PEG 302 DP 472234	ob484	139°55'00"	M	82.90	M
RM 314 DP 472234	PEG 90 DP 472234	ob488	33°48'00"	M	20.66	M
RM 314 DP 472234	PEG 74 DP 472234	ob489	55°05'00"	M	48.92	M
RM 314 DP 472234	PEG 75 DP 472234	ob490	51°17'30"	M	52.91	M
RM 314 DP 472234	PEG 73 DP 472234	ob491	43°33'30"	M	64.48	M
RM 314 DP 472234	PEG 339 DP 472234	ob492	36°28'00"	M	82.33	M
RM 314 DP 472234	PEG 347 DP 472234	ob493	23°12'00"	M	76.73	M
RM 314 DP 472234	PEG 346 DP 472234	ob494	8°45'00"	M	75.72	M
RM 314 DP 472234	PEG 345 DP 472234	ob495	354°48'00"	M	79.49	M
RM 314 DP 472234	PEG 83 DP 472234	ob496	336°09'00"	M	51.88	M
RM 314 DP 472234	PEG 84 DP 472234	ob497	342°07'00"	M	48.37	M
RM 314 DP 472234	PEG 85 DP 472234	ob498	357°00'00"	M	43.19	M
RM 314 DP 472234	PEG 86 DP 472234	ob499	5°18'00"	M	41.90	M
RM 314 DP 472234	PEG 87 DP 472234	ob500	23°01'00"	M	42.16	M
RM 314 DP 472234	PEG 88 DP 472234	ob501	31°07'00"	M	43.69	M
RM 753 DP 472234	RM 752 DP 472234	ob474	209°52'00"	M	76.90	M
RM 752 DP 472234	RM 754 DP 472234	ob502	215°27'45"	M	120.29	M
RM 754 DP 472234	RM 755 DP 472234	ob503	217°11'00"	M	136.17	M
IS 315 DP 472234	IS VIII DP 67675	ob507	220°35'00"	M	33.70	M
RM 755 DP 472234	PEG 372 DP 472234	ob504	123°38'00"	M	10.52	M
RM 755 DP 472234	PEG 373 DP 472234	ob505	177°35'30"	M	95.22	M
RM 755 DP 472234	IS 315 DP 472234	ob506	171°11'00"	M	120.69	M
IS VIII DP 67675	IT II DP 354443	ob9	112°59'30"	M	144.23	M
IT II DP 354443	RM 311 DP 472234	ob13	29°30'30"	M	364.40	M

Mark and Vector

Survey Number DP 472234
Coordinate System Mount Eden 2000

From	To	Code	Bearing	Adpt Surv	Distance	Adpt Surv
IS VIII DP 67675	RM 311 DP 472234	ob10	50°07'40"	M	406.83	M
IS VIII DP 67675	RM 312 DP 472234	ob11	37°06'30"	M	433.68	M
RM 311 DP 472234	PEG 368 DP 472234	ob359	296°21'00"	M	5.70	M
RM 311 DP 472234	PEG 104 DP 472234	ob358	353°43'30"	M	90.83	M

Mark and Vector

Survey Number DP 472234
Coordinate System Mount Eden 2000

From	To	Code	Chord Bearing	Arc Length	Radius	Adpt Surv
PEG 114 DP 428122	PEG 96 DP 428122	ob508	182°35'00"	6.77	141.00	A DP 428122
PEG 90 DP 428122	PEG 89 DP 428122	ob509	1°58'00"	21.29	141.00	A DP 428122
PEG 89 DP 428122	PEG 88 DP 428122	ob510	10°37'00.7"	21.29	141.00	A DP 428122
PEG 88 DP 428122	PEG 87 DP 428122	ob511	19°16'00"	21.29	141.00	A DP 428122
PEG 87 DP 428122	PEG 33 DP 472234	ob512	24°36'00"	4.98	141.00	A DP 428122
PEG 33 DP 472234	PEG 34 DP 472234	ob513	28°56'00"	16.309	141.00	A DP 428122
PEG 34 DP 472234	PEG 301 DP 472234	ob514	36°34'00"	21.29	141.00	A DP 428122

Mark Name	Description
ALP 501 DP 438194	IN CONCRETE CHANNEL
DISK 332 DP 472234	On top of fence post
DISK 335 DP 472234	Disk in concrete footing of fence
DISK 336 DP 472234	Disk in footpath
DISK 35 DP 472234	Disk in concrete footing of new fence
DISK 36 DP 472234	Disk in conc footing of fence
DISK 369 DP 472234	Disk in conc. footing of retaining wall.
DISK 37 DP 472234	Disk is conc footing of fence
IS 3 DP 467806	Spike in grass berm 0.1m south of footpath edge. d. 0.1m
IS 3 SO 404054	IS XII DP 67675 DISTURBED SHOWN ON SO 404054
IT 2 SO 444908	d. 0.3
IT VII DP 67675	25mm Iron Tube
RM 3 DP 457312	Brass plaque in concrete channel
RM 300 DP 428122	in channel
RM 301 DP 428122	Bronze Circular Plaque flush in channel
RM 310 DP 472234	Bronze plaque in concrete channel.
RM 311 DP 472234	Bronze plaque in concrete channel.
RM 312 DP 472234	Bronze plaque in concrete channel.
RM 313 DP 472234	Bronze plaque in channel.
RM 314 DP 472234	Bronze plaque in concrete channel.
RM 4 DP 457312	Brass plaque in concrete channel
RM 400 DP 415528	in channel
RM 6 DP 457312	Brass plaque in concrete channel

Mark and Vector

Survey Number DP 472234
Coordinate System Mount Eden 2000

Mark Name	Description
RM 753 DP 472234	Bronze plaque in channel.

*** End of Report ***



SUBDIVISION OF LOT 2 DP 467806	
LAND REGISTRATION DISTRICT	NORTH AUCKLAND
PLAN NUMBER	DP 472234
TERRITORIAL AUTHORITY	AUCKLAND COUNCIL
TERRITORIAL AUTHORITY REF	R55315
DATE	JANUARY 2014
OUR REF	33301-P3-STAGE 1

AMALGAMATION CONDITIONS

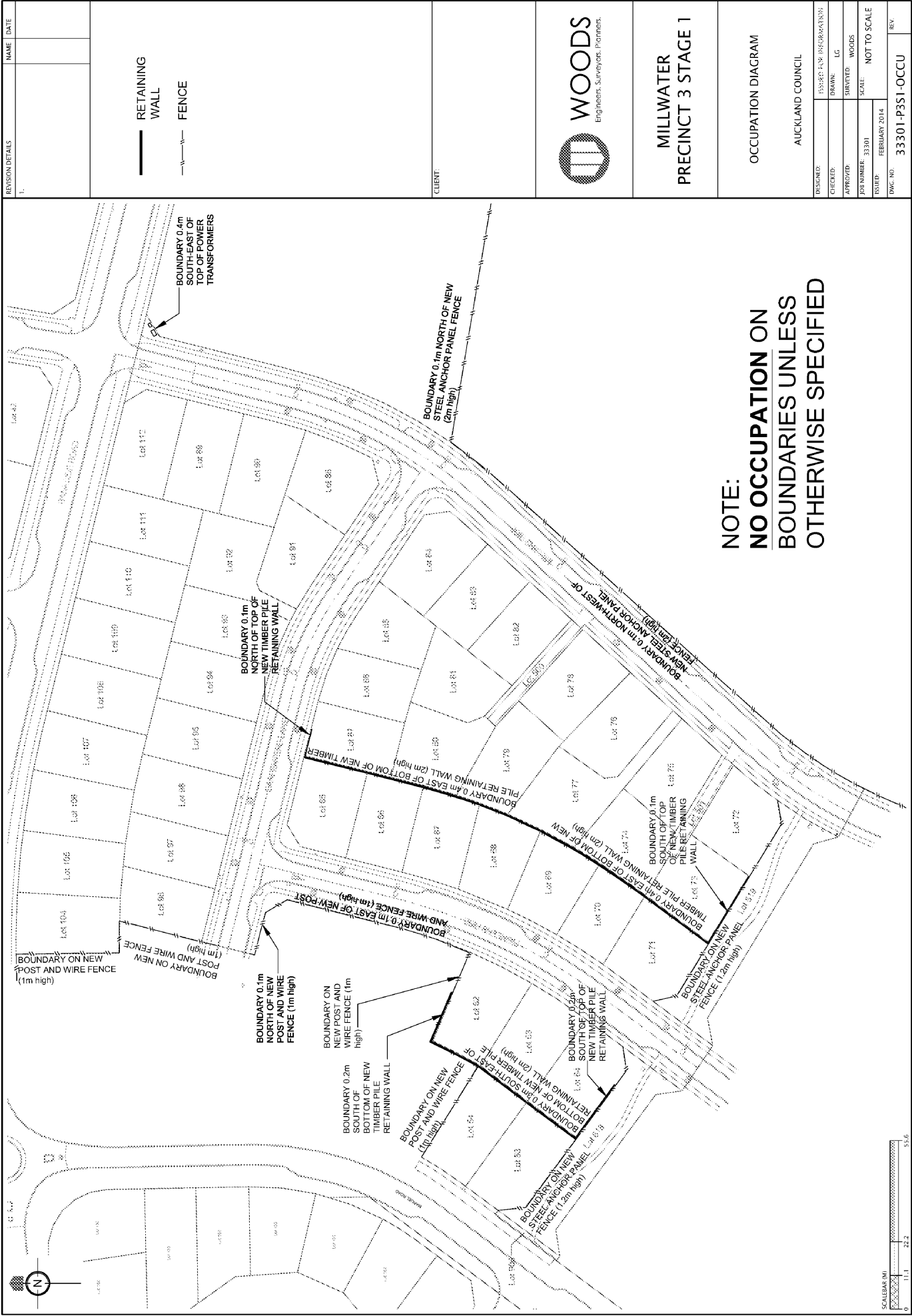
THAT LOT 500 HEREON (LEGAL ACCESS) BE HELD AS TO THREE UNDIVIDED ONE-THIRD SHARES BY THE OWNERS OF LOTS 79, 80 & 81 HEREON AS TENANTS IN COMMON IN THE SAID SHARES AND THAT INDIVIDUAL COMPUTER FREEHOLD REGISTERS BE ISSUED IN ACCORDANCE THEREWITH.

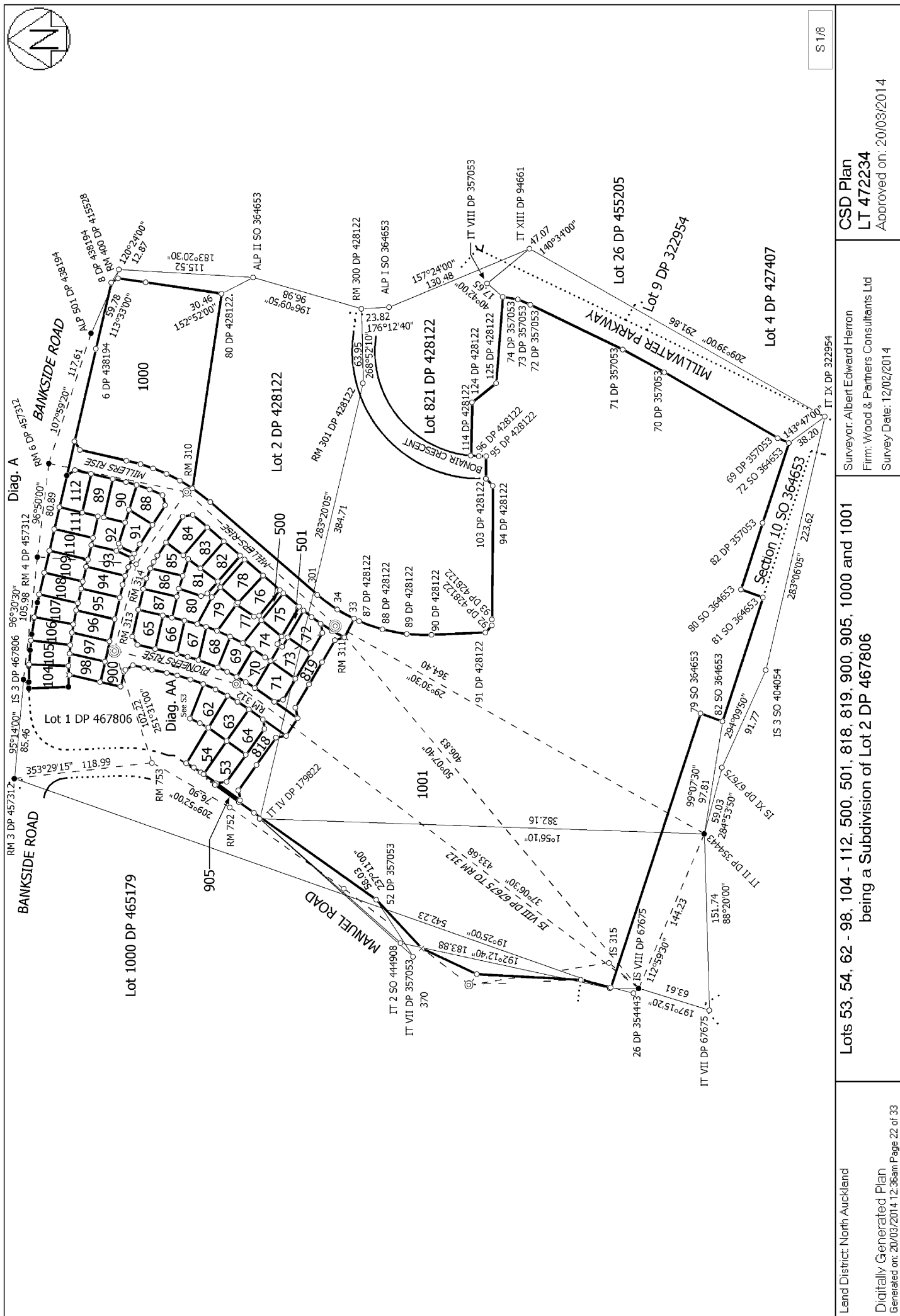
SEE FILE A634861

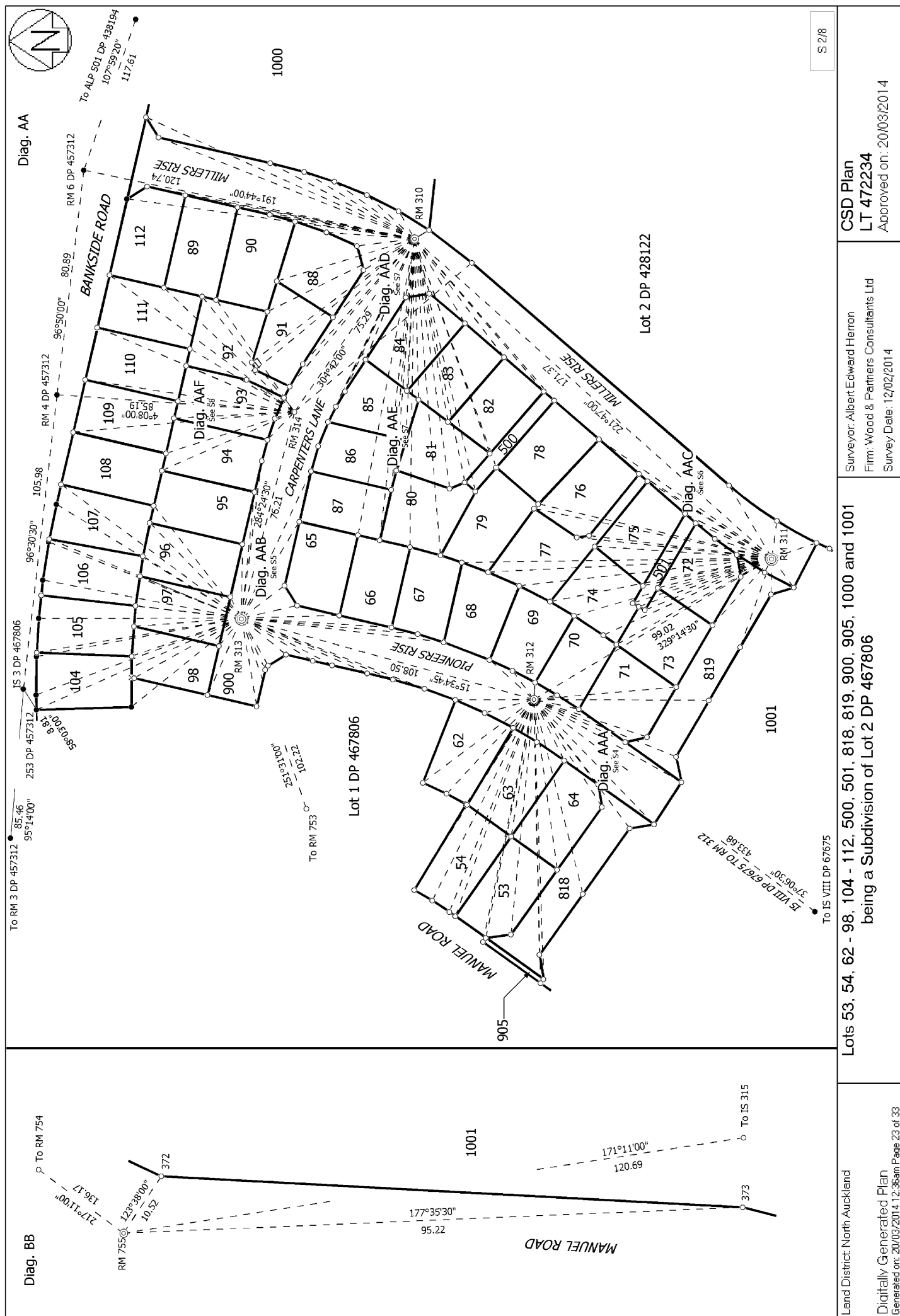
THAT LOT 501 HEREON (LEGAL ACCESS) BE HELD AS TO TWO UNDIVIDED ONE-HALF SHARES BY THE OWNERS OF LOTS 73 & 74 HEREON AS TENANTS IN COMMON IN THE SAID SHARES AND THAT INDIVIDUAL COMPUTER FREEHOLD REGISTERS BE ISSUED IN ACCORDANCE THEREWITH.

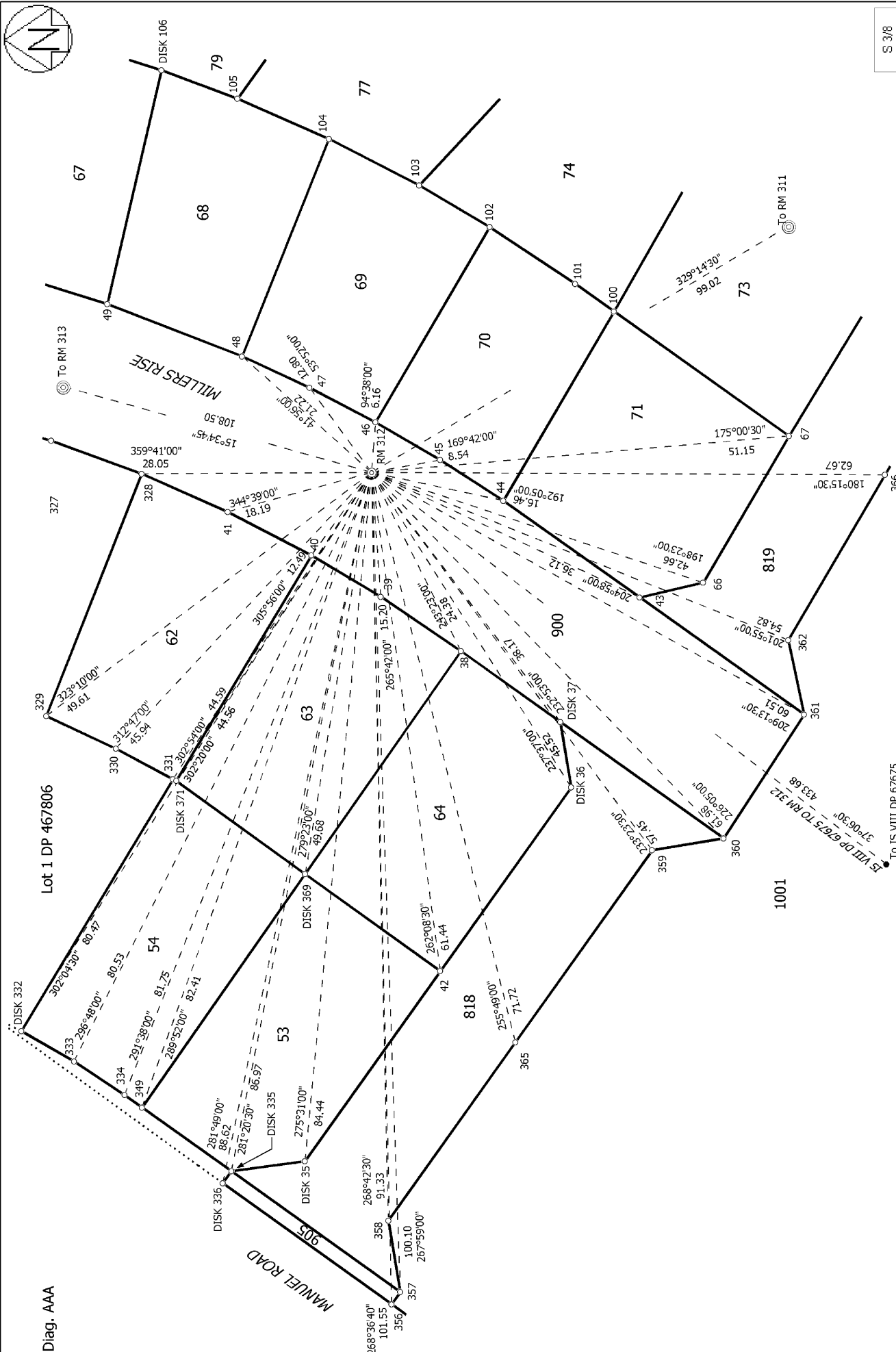
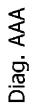
SEE FILE A634861

Occupation Diagram





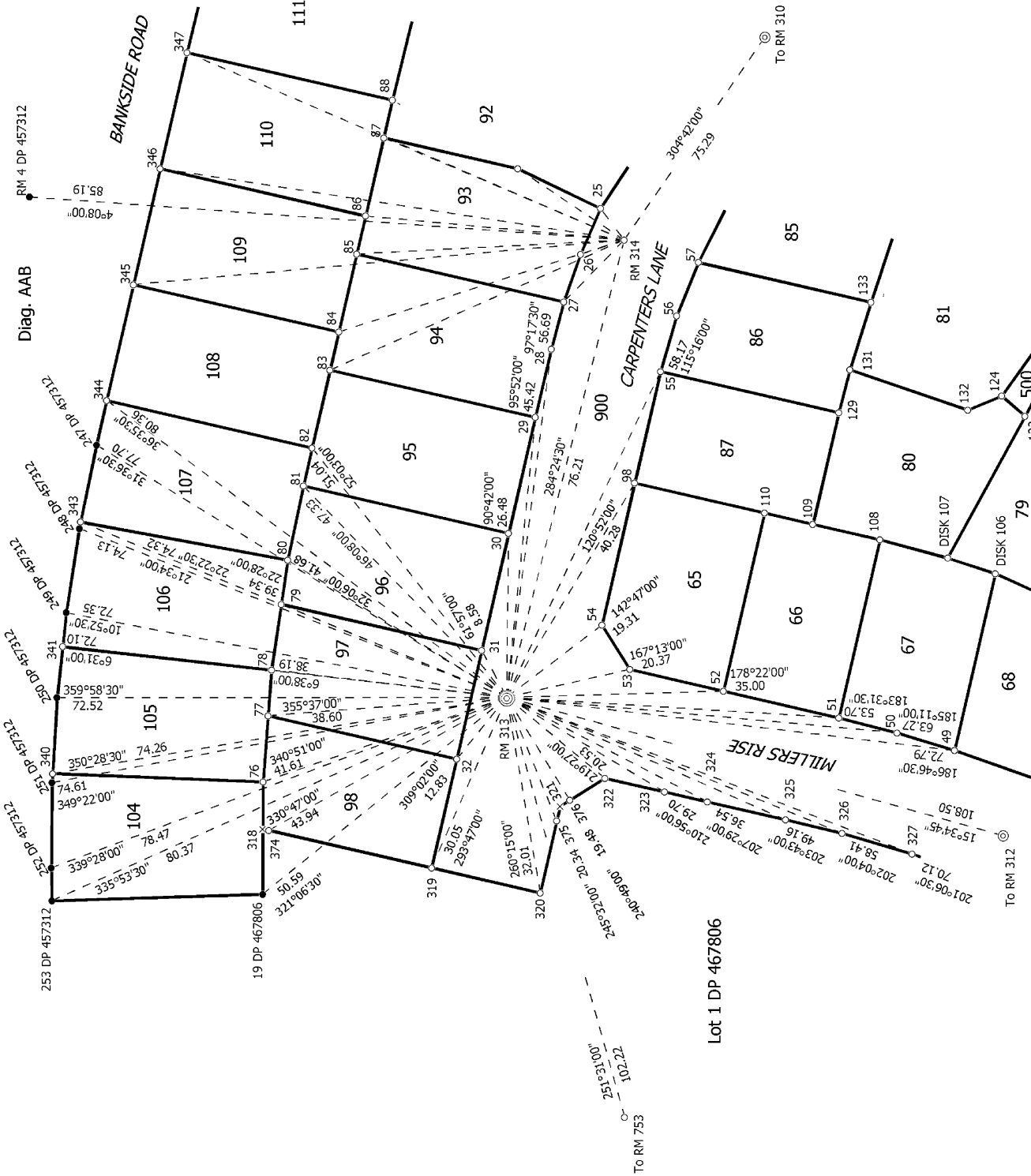




**Lots 53, 54, 62 - 98, 104 - 112, 500, 501, 818, 819, 900, 905, 1000 and 1001
being a Subdivision of Lot 2 DP 467806**

Surveyor: Albert Edward Herron
Firm: Wood & Partners Consultants Ltd
Survey Date: 12/02/2014

CSD Plan
LT 472234
Approved on:



S 4/8

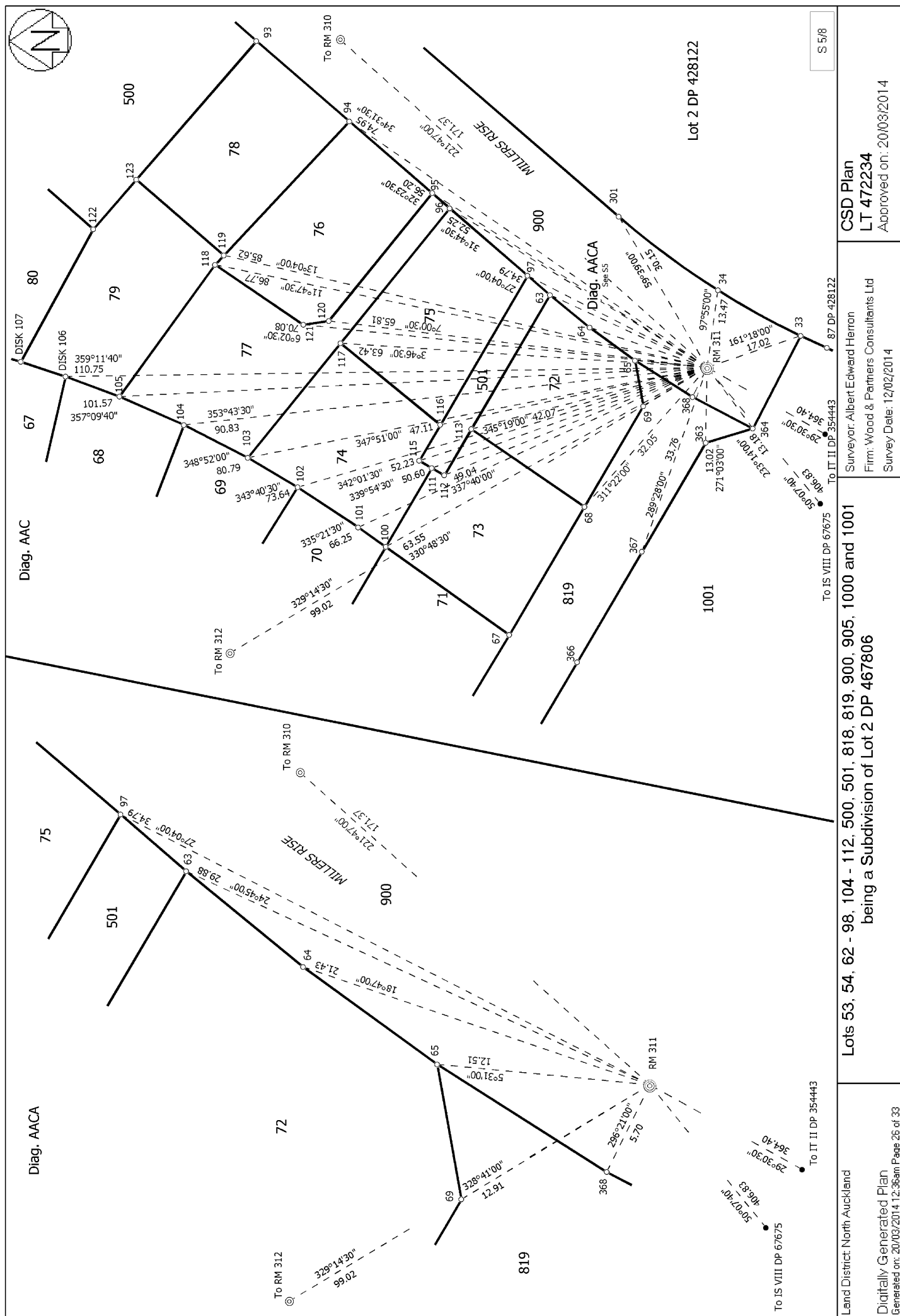
Land District North Auckland

Digitally Generated Plan.
Generated on: 20/03/2014 12:36am Page 25 of 33

Lots 53, 54, 62 - 98, 104 - 112, 500, 501, 818, 819, 900, 905, 1000 and 1001
being a Subdivision of Lot 2 DP 467806

Surveyor: Albert Edward Hemon
Firm: Wood & Partners Consultants Ltd
Survey Date: 12/02/2014

CSD Plan
LT 472234
Approved on: 20/03/2014





Diag. AAF

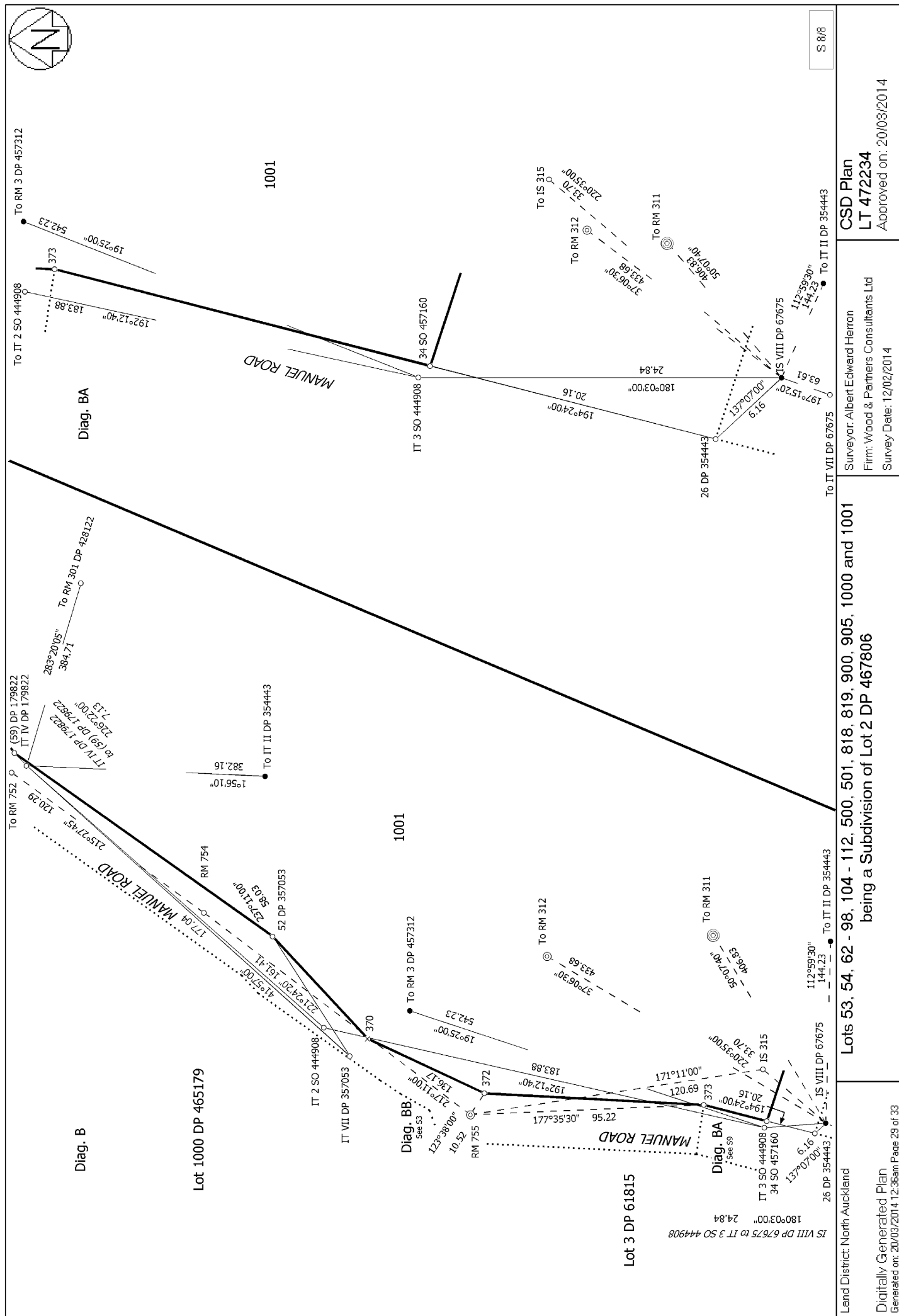


S 7/8

Lots 53, 54, 62 - 98, 104 - 112, 500, 501, 818, 819, 900, 905, 1000 and 1001
being a Subdivision of Lot 2 DP 467806

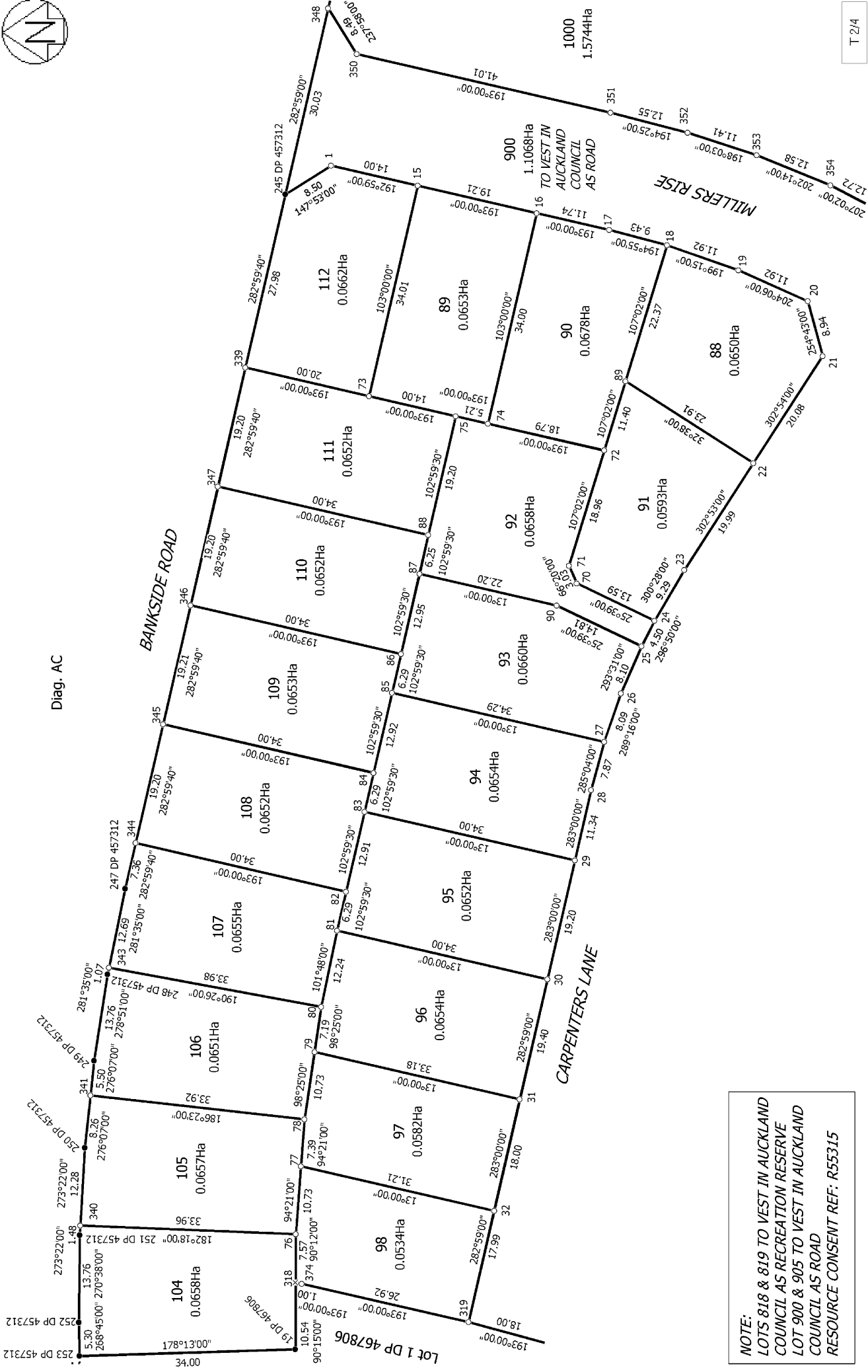
Surveyor: Albert Edward Herron
Firm: Wood & Partners Consultants Ltd
Survey Date: 12/02/2014

CSD Plan
LT 472234
Approved on: 20/03/2014

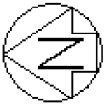




Diag. AC

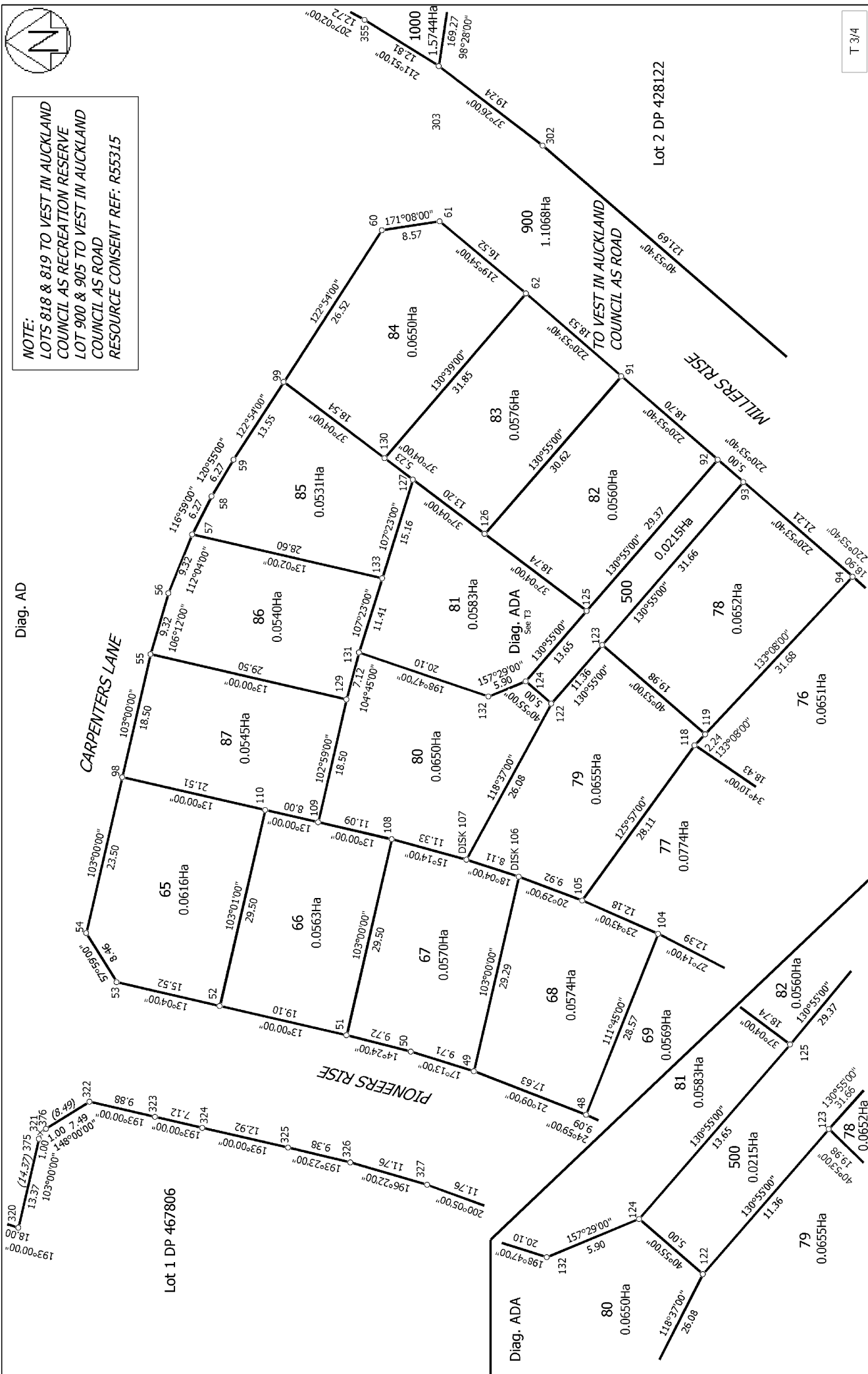


Land District North Auckland	Lots 53, 54, 62 - 98, 104 - 112, 500, 501, 818, 819, 900, 905, 1000 and 1001 being a Subdivision of Lot 2 DP 467806	Surveyor: Albert Edward Herron Firm: Wood & Partners Consultants Ltd Survey Date: 12/02/2014	CSD Plan LT 472234 Approved on: 20/03/2014
Digitally Generated Plan. Generated on: 20/03/2014 12:36am	Page 31 of 33		



NOTE:
LOTS 818 & 819 TO VEST IN AUCKLAND
COUNCIL AS RECREATION RESERVE
LOT 900 & 905 TO VEST IN AUCKLAND
COUNCIL AS ROAD
RESOURCE CONSENT REF: R55315

Diag. AD



T 3/4

Land District North Auckland

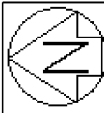
Digitally Generated Plan

Generated on: 20/03/2014 12:36am Page 32 of 33

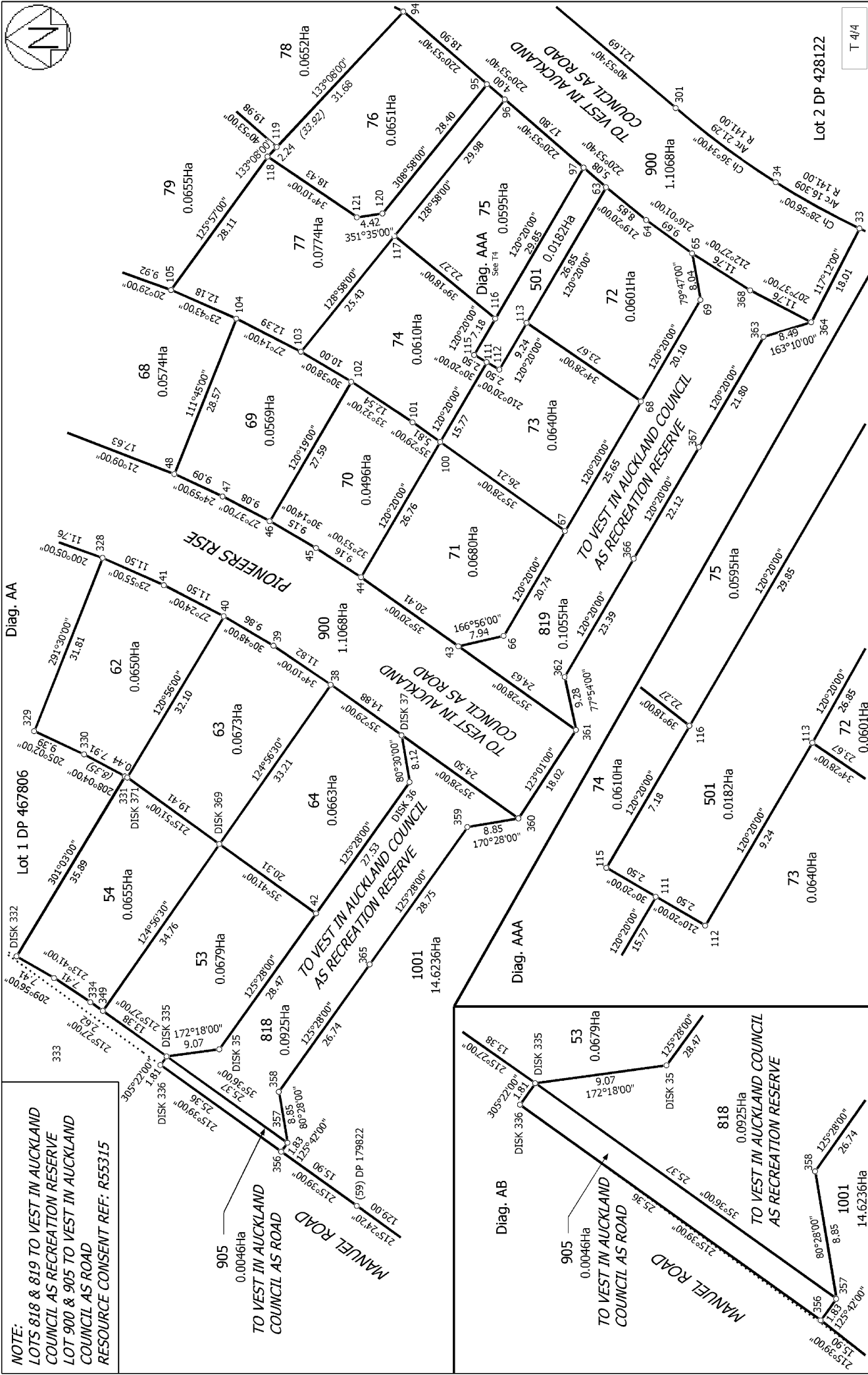
Lots 53, 54, 62 - 98, 104 - 112, 500, 501, 818, 819, 900, 905, 1000 and 1001
being a Subdivision of Lot 2 DP 467806

Surveyor: Albert Edward Hemon
Firm: Wood & Partners Consultants Ltd
Survey Date: 12/02/2014

CSD Plan
LT 472234
Approved on: 20/03/2014



NOTE:
LOTS 818 & 819 TO VEST IN AUCKLAND
COUNCIL AS RECREATION RESERVE
LOT 900 & 905 TO VEST IN AUCKLAND
COUNCIL AS ROAD
RESOURCE CONSENT REF: R55315



Land District North Auckland	Lots 53, 54, 62 - 98, 104 - 112, 500, 501, 818, 819, 900, 905, 1000 and 1001 being a Subdivision of Lot 2 DP 467806		Surveyor: Albert Edward Herron Firm: Wood & Partners Consultants Ltd Survey Date: 12/02/2014	CSD Plan LT 472234 Approved on: 20/03/2014
Digitally Generated Plan. Generated on: 20/03/2014 12:36am		Page 33 of 33		