



Title Plan - LT 510199

Survey Number	LT 510199
Surveyor Reference	33221 P2 S4D
Surveyor	Michael Rowan Hallam
Survey Firm	Wood & Partners Consultants Ltd
Surveyor Declaration	I Michael Rowan Hallam, being a licensed cadastral surveyor, certify that: (a) this dataset provided by me and its related survey are accurate, correct and in accordance with the Cadastral Survey Act 2002 and the Rules for Cadastral Survey 2010, and (b) the survey was undertaken by me or under my personal direction. Declared on 25 Sep 2017 08:31 AM

Survey Details

Dataset Description	Lots 342, 343, 372, 400 to 410, 432 to 437, 448 to 454, 641, 643 to 660, 700, 924 and 925 Being a Subdivision of Lot 2006 DP 510198		
Status	Approved as to Survey		
Land District	North Auckland	Survey Class	Class A
Submitted Date	25/09/2017	Survey Approval Date	25/09/2017
		Deposit Date	

Territorial Authorities

Auckland Council

Comprised In

CT 789259

Created Parcels

Parcels	Parcel Intent	Area	CT Reference
Area AI Deposited Plan 510199	Easement		
Area AJ Deposited Plan 510199	Land Covenant		
Area AK Deposited Plan 510199	Land Covenant		
Lot 641 Deposited Plan 510199	Fee Simple Title	0.0651 Ha	794228
Lot 400 Deposited Plan 510199	Fee Simple Title	0.0526 Ha	794229
Lot 401 Deposited Plan 510199	Fee Simple Title	0.0526 Ha	794230
Lot 402 Deposited Plan 510199	Fee Simple Title	0.0528 Ha	794231
Lot 403 Deposited Plan 510199	Fee Simple Title	0.0650 Ha	794232
Lot 404 Deposited Plan 510199	Fee Simple Title	0.0520 Ha	794233
Lot 405 Deposited Plan 510199	Fee Simple Title	0.0526 Ha	794234
Lot 406 Deposited Plan 510199	Fee Simple Title	0.0527 Ha	794235
Lot 407 Deposited Plan 510199	Fee Simple Title	0.0525 Ha	794236
Lot 643 Deposited Plan 510199	Fee Simple Title	0.0528 Ha	794237
Lot 644 Deposited Plan 510199	Fee Simple Title	0.0525 Ha	794238
Lot 645 Deposited Plan 510199	Fee Simple Title	0.0525 Ha	794239
Lot 646 Deposited Plan 510199	Fee Simple Title	0.0540 Ha	794240
Lot 647 Deposited Plan 510199	Fee Simple Title	0.0869 Ha	794241
Lot 648 Deposited Plan 510199	Fee Simple Title	0.0743 Ha	794242
Lot 649 Deposited Plan 510199	Fee Simple Title	0.0575 Ha	794243
Lot 650 Deposited Plan 510199	Fee Simple Title	0.0557 Ha	794244

Title Plan - LT 510199

Created Parcels

Parcels	Parcel Intent	Area	CT Reference
Lot 651 Deposited Plan 510199	Fee Simple Title	0.0559 Ha	794245
Lot 652 Deposited Plan 510199	Fee Simple Title	0.0671 Ha	794246
Lot 653 Deposited Plan 510199	Fee Simple Title	0.0557 Ha	794247
Lot 654 Deposited Plan 510199	Fee Simple Title	0.0650 Ha	794248
Lot 655 Deposited Plan 510199	Fee Simple Title	0.0651 Ha	794249
Lot 656 Deposited Plan 510199	Fee Simple Title	0.0659 Ha	794250
Lot 657 Deposited Plan 510199	Fee Simple Title	0.0553 Ha	794251
Lot 658 Deposited Plan 510199	Fee Simple Title	0.0558 Ha	794252
Lot 659 Deposited Plan 510199	Fee Simple Title	0.0570 Ha	794253
Lot 660 Deposited Plan 510199	Fee Simple Title	0.0655 Ha	794254
Lot 408 Deposited Plan 510199	Fee Simple Title	0.0539 Ha	794255
Lot 409 Deposited Plan 510199	Fee Simple Title	0.0539 Ha	794256
Lot 410 Deposited Plan 510199	Fee Simple Title	0.0650 Ha	794257
Lot 448 Deposited Plan 510199	Fee Simple Title	0.0524 Ha	794258
Lot 449 Deposited Plan 510199	Fee Simple Title	0.0524 Ha	794259
Lot 450 Deposited Plan 510199	Fee Simple Title	0.0487 Ha	794260
Lot 451 Deposited Plan 510199	Fee Simple Title	0.0471 Ha	794261
Lot 452 Deposited Plan 510199	Fee Simple Title	0.0518 Ha	794262
Lot 453 Deposited Plan 510199	Fee Simple Title	0.0511 Ha	794263
Lot 454 Deposited Plan 510199	Fee Simple Title	0.0654 Ha	794264
Lot 432 Deposited Plan 510199	Fcc Simple Titlc	0.0665 Ha	794265
Lot 433 Deposited Plan 510199	Fee Simple Title	0.0661 Ha	794266
Lot 434 Deposited Plan 510199	Fee Simple Title	0.0424 Ha	794267
Lot 435 Deposited Plan 510199	Fee Simple Title	0.0537 Ha	794268
Lot 436 Deposited Plan 510199	Fee Simple Title	0.0532 Ha	794269
Lot 437 Deposited Plan 510199	Fee Simple Title	0.0650 Ha	794270
Lot 372 Deposited Plan 510199	Fee Simple Title	0.0655 Ha	794271
Lot 342 Deposited Plan 510199	Fee Simple Title	0.0656 Ha	794272
Lot 343 Deposited Plan 510199	Fee Simple Title	0.0660 Ha	794273
Lot 700 Deposited Plan 510199	Fee Simple Title	0.1050 Ha	Multiple
Lot 924 Deposited Plan 510199	Vesting on Deposit for Road	0.7774 Ha	
Lot 925 Deposited Plan 510199	Vesting on Deposit for Road	0.0022 Ha	
Area A Deposited Plan 510199	Easement		
Area B Deposited Plan 510199	Land Covenant		
Area C Deposited Plan 510199	Land Covenant		
Area D Deposited Plan 510199	Land Covenant		
Area E Deposited Plan 510199	Land Covenant		
Area F Deposited Plan 510199	Land Covenant		
Area G Deposited Plan 510199	Easement		
Area H Deposited Plan 510199	Easement		
Area I Deposited Plan 510199	Easement		
Area J Deposited Plan 510199	Easement		

Title Plan - LT 510199

Created Parcels

Parcels	Parcel Intent	Area	CT Reference
Area K Deposited Plan 510199	Easement		
Area L Deposited Plan 510199	Easement		
Area M Deposited Plan 510199	Easement		
Area N Deposited Plan 510199	Easement		
Area O Deposited Plan 510199	Easement		
Area P Deposited Plan 510199	Easement		
Area Q Deposited Plan 510199	Easement		
Area R Deposited Plan 510199	Easement		
Area S Deposited Plan 510199	Easement		
Area T Deposited Plan 510199	Land Covenant		
Area U Deposited Plan 510199	Land Covenant		
Area V Deposited Plan 510199	Land Covenant		
Area W Deposited Plan 510199	Land Covenant		
Area X Deposited Plan 510199	Land Covenant		
Area Y Deposited Plan 510199	Land Covenant		
Area AA Deposited Plan 510199	Land Covenant		
Area AB Deposited Plan 510199	Land Covenant		
Area Z Deposited Plan 510199	Land Covenant		
Area AC Deposited Plan 510199	Land Covenant		
Area AD Deposited Plan 510199	Land Covenant		
Area AE Deposited Plan 510199	Land Covenant		
Area AF Deposited Plan 510199	Land Covenant		
Area AG Deposited Plan 510199	Land Covenant		
Area AH Deposited Plan 510199	Land Covenant		
Total Area		3.5627 Ha	



LOTS 342, 343, 372, 400 to 410, 432 to 437, 448 to 454, 641, 643 to 660, 700, 924 AND 925 BEING A SUBDIVISION OF LOT 2006 DP 510198	
LAND REGISTRATION DISTRICT	NORTH AUCKLAND
PLAN NUMBER	DP 510199
TERRITORIAL AUTHORITY	AUCKLAND COUNCIL
TERRITORIAL AUTHORITY REF	SLC-62477C
DATE	JULY 2017
OUR REF	33221 Millwater P2 S4D

SCHEDULE OF PROPOSED EASEMENTS			
PURPOSE	SHOWN AS	SERVIENT TENEMENT	DOMINANT TENEMENT
RIGHT TO DRAIN WATER (OVERLAND FLOW)	'A' HEREON	LOT 648 HEREON	LOT 700 HEREON
RIGHT OF SUPPORT	'S' HEREON	LOT 645 HEREON	LOT 647 HEREON
RIGHT TO MAINTAIN GARDEN	'G' HEREON	LOT 402 HEREON	LOT 403 HEREON
	'H' HEREON	LOT 402 HEREON	LOT 404 HEREON
	'I' HEREON	LOT 657 HEREON	LOT 404 HEREON
	'J' HEREON	LOT 658 HEREON	LOT 404 HEREON
	'K' HEREON	LOT 658 HEREON	LOT 405 HEREON
	'L' HEREON	LOT 659 HEREON	LOT 406 HEREON
	'M' HEREON	LOT 659 HEREON	LOT 407 HEREON
	'N' HEREON	LOT 660 HEREON	LOT 407 HEREON
	'O' HEREON	LOT 660 HEREON	LOT 643 HEREON
	'P' HEREON	LOT 648 HEREON	LOT 643 HEREON
	'Q' HEREON	LOT 648 HEREON	LOT 644 HEREON
	'R' HEREON	LOT 648 HEREON	LOT 645 HEREON



SCHEDULE OF PROPOSED EASEMENTS IN GROSS			
PURPOSE	SHOWN AS	SERVIENT TENEMENT	GRANTEE
RIGHT TO CONVEY ELECTRICITY	'AI' HEREON	LOT 700 HEREON	VECTOR LTD
RIGHT TO CONVEY GAS	'AI' HEREON	LOT 700 HEREON	VECTOR LTD
RIGHT TO CONVEY TELECOMMUNICATIONS AND COMPUTER MEDIA	'AI' HEREON	LOT 700 HEREON	CHORUS NEW ZEALAND LIMITED

LAND COVENANTS

AREAS SHOWN AS 'B' – 'F' AND 'T' HEREON ARE TO BE SUBJECT TO LAND COVENANTS.

AREAS SHOWN AS 'U' – 'AH', 'AJ' AND 'AK' HEREON ARE TO BE SUBJECT TO LAND COVENANTS.

AMALGAMATION CONDITIONS

THAT LOT 700 HEREON (LEGAL ACCESS) BE HELD AS TO TEN UNDIVIDED ONE-TENTH SHARES BY THE OWNERS OF LOTS 648-652 & 656-660 HEREON AS TENANTS IN COMMON IN THE SAID SHARES AND THAT INDIVIDUAL COMPUTER REGISTERS BE ISSUED IN ACCORDANCE THEREWITH.



Diag. A

Diag. AA
See T2

Diag. AE
See T4

Lot 2000 DP 507389

T 1/5

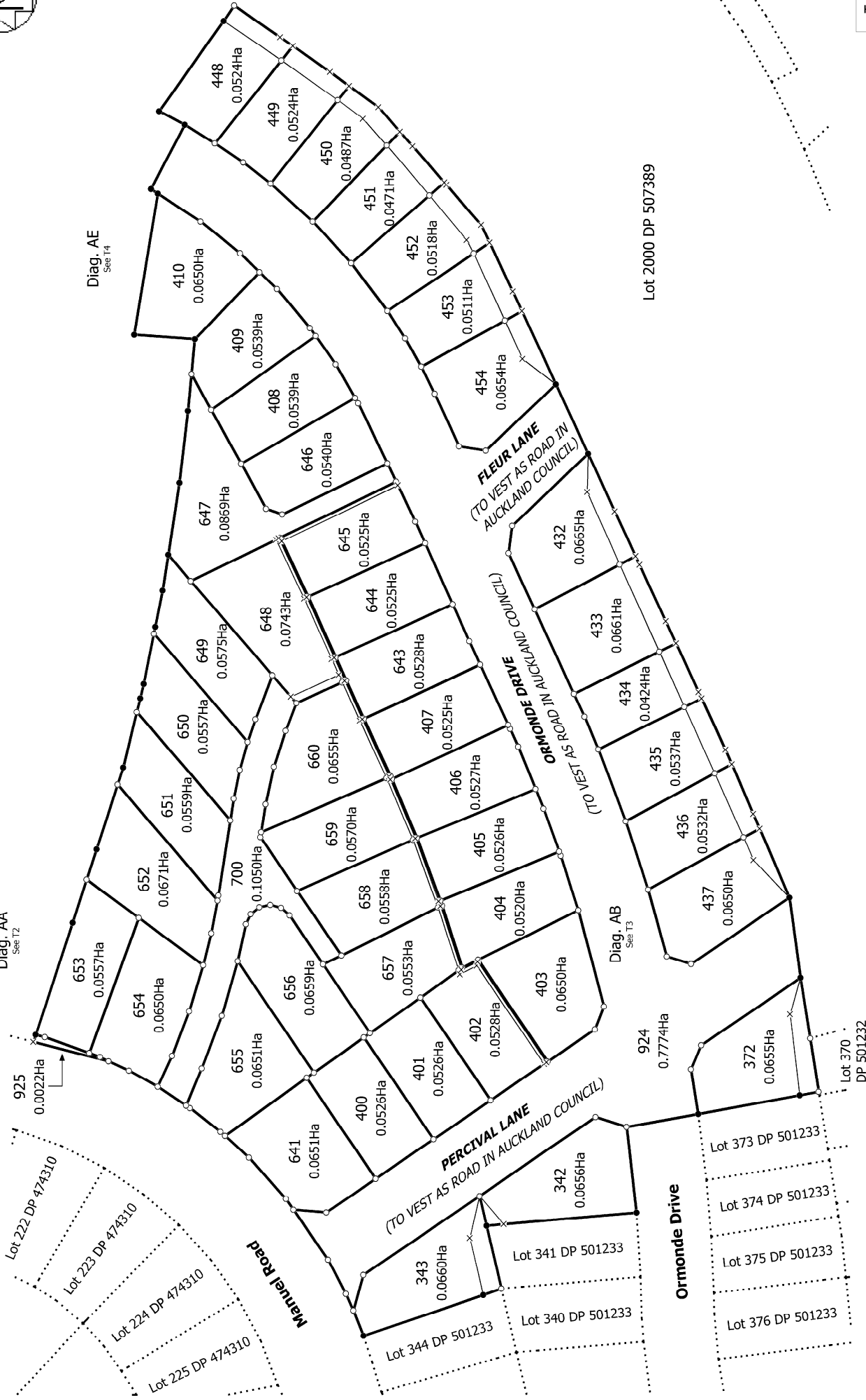
Land District: North Auckland

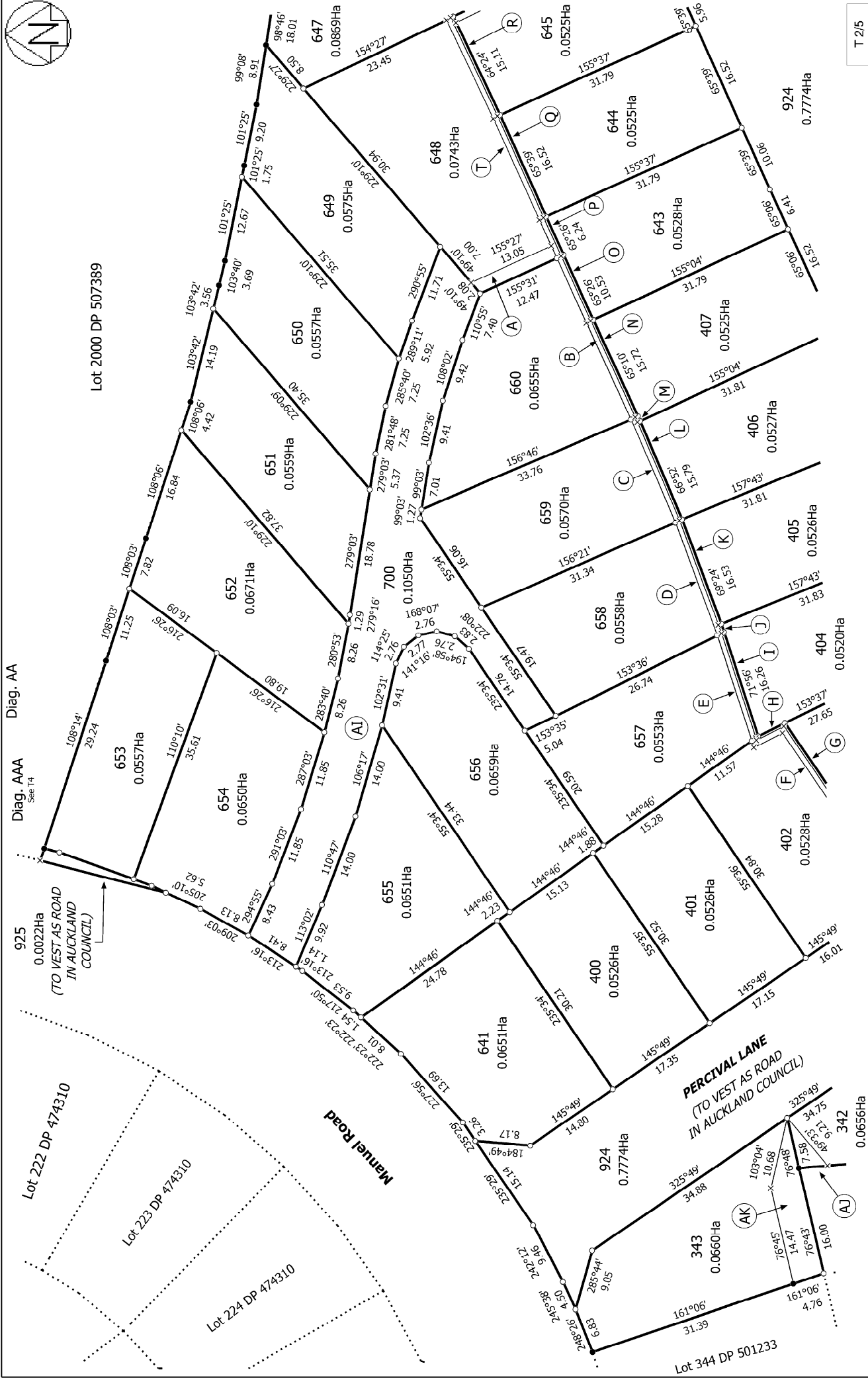
Digitally Generated Plan
Generated on: 25/09/2017 09:08am Page 5 of 10

Lots 342, 343, 372, 400 to 410, 432 to 437, 448 to 454, 641, 643 to 660, 700, 924
and 925 Being a Subdivision of Lot 2006 DP 510198

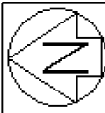
Surveyor: Michael Rowan Hallam
Firm: Wood & Partners Consultants Ltd

Title Plan
LT 510199
Approved on: 25/09/2017





Land District: North Auckland		Lots 342, 343, 372, 400 to 410, 432 to 437, 448 to 454, 641, 643 to 660, 700, 924		Surveyor: Michael Rowan Hallam Firm: Wood & Partners Consultants Ltd		Title Plan LT 510199 Approved on: 25/09/2017	
Digitally Generated Plan		and 925 Being a Subdivision of Lot 2006 DP 510198					
Generated on: 25/09/2017 09:08am Page 7 of 10							



Diag. AB



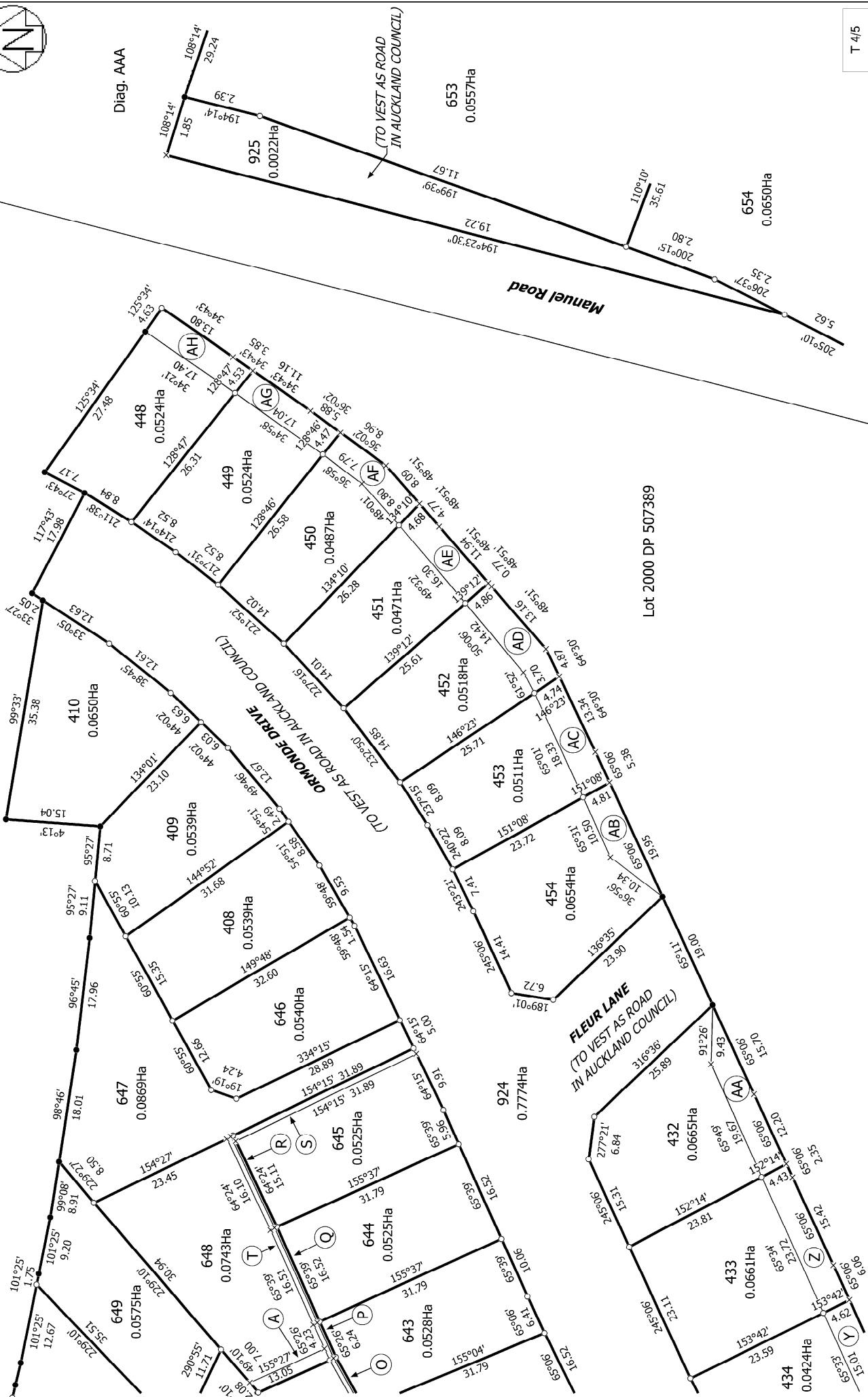
T 3/5

<p>Land District: North Auckland</p> <p>Digitally Generated Plan</p> <p>Generated on: 25/09/2017 09:08am Page 3 of 10</p>	<p>Lots 342, 343, 372, 400 to 410, 432 to 437, 448 to 454, 641, 643 to 660, 700, 924 and 925 Being a Subdivision of Lot 2006 DP 510198</p>	<p>Surveyor: Michael Rowan Hallam</p> <p>Firm: Wood & Partners Consultants Ltd</p>	<p>Title Plan</p> <p>LT 510199</p> <p>Approved on: 25/09/2017</p>
--	--	--	---



Diag. AE

Diag. AAA



T 4/5

Land District: North Auckland

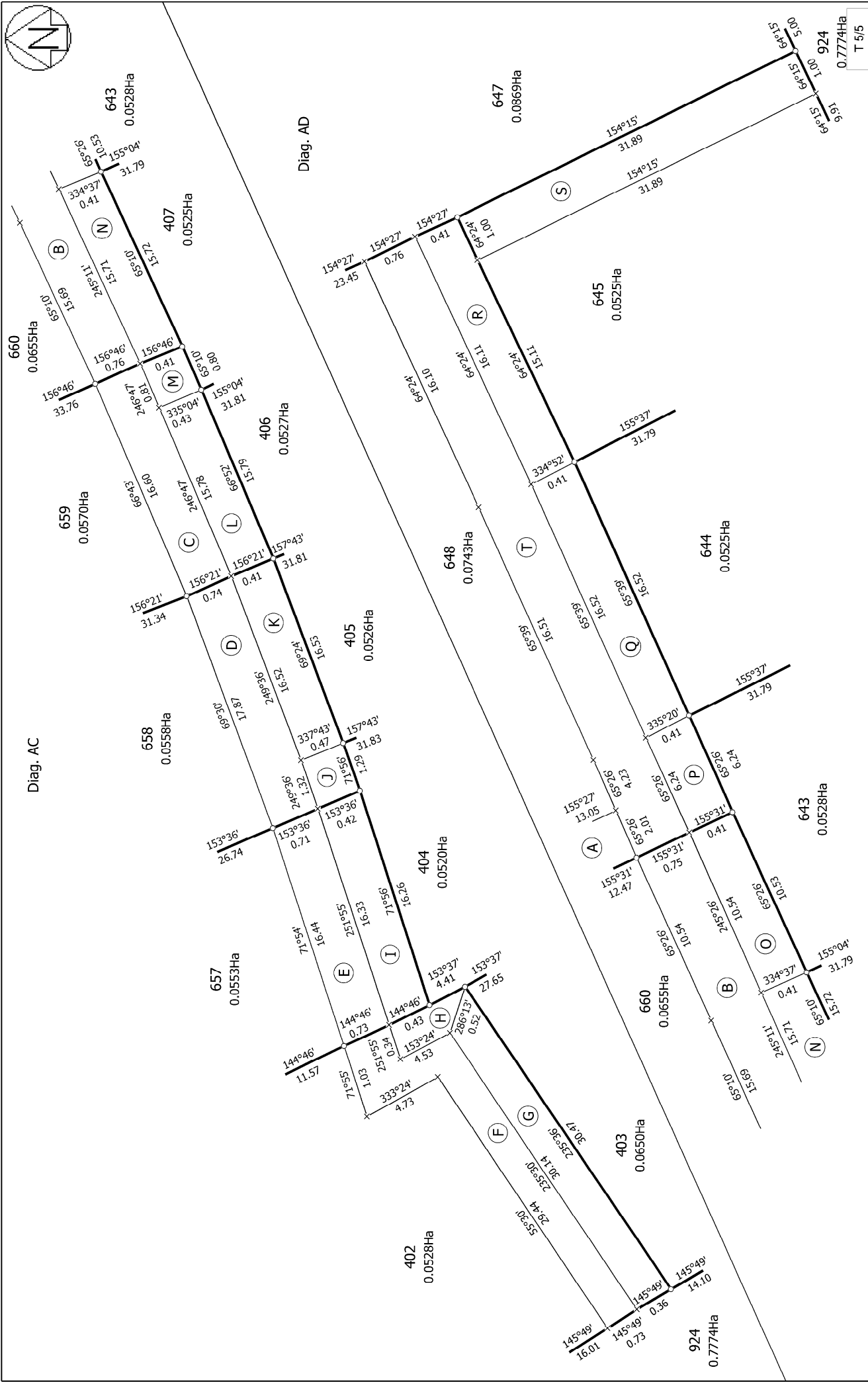
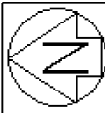
Lots 342, 343, 372, 400 to 410, 432 to 437, 448 to 454, 641, 643 to 660, 700, 924
and 925 Being a Subdivision of Lot 2006 DP 510198

Surveyor: Michael Rowan Hallam
Firm: Wood & Partners Consultants Ltd

Title Plan
LT 510199
Approved on: 25/09/2017

Digitally Generated Plan

Generated on: 25/09/2017 09:08am Page 3 of 10



Land District: North Auckland	Lots 342, 343, 372, 400 to 410, 432 to 437, 448 to 454, 641, 643 to 660, 700, 924 and 925 Being a Subdivision of Lot 2006 DP 510198	Surveyor: Michael Rowan Hallam Firm: Wood & Partners Consultants Ltd	Title Plan LT 510199 Approved on: 25/09/2017
Digitally Generated Plan Generated on: 25/09/2017 09:08am Page 10 of 10			