

MILLWATER - PRECINCT 2 STAGE 3A

AS-BUILT DRAWINGS

CONTENT INDEX AND LOCALITY PLAN

COVER PAGE	
000	Plans Index and Location Plan
MILLWATER - PRECINCT 2 STAGE 03A AS-BUILT DRAWINGS	
DWG NO	DESCRIPTION
100	Final Contour As-Built Plan
110	Cut/Fill Original Surface - Earthwork Surface As-Built Plan
111	Cut/Fill Earthworks Surface - Final Surface As-Built Plan
112	Cut/Fill Original Surface - Final Surface As-Built Plan
120	Cut/Fill - Shear Key, Undercut & Subsoil Drains As-Built
200 - 201	Roading As-Built Plan
250	Reserve As-Built Plan
300-303	Stormwater As-Built Plans
400	Low Pressure Sewer As-Built Plan
500	Water Reticulation As-Built Plan

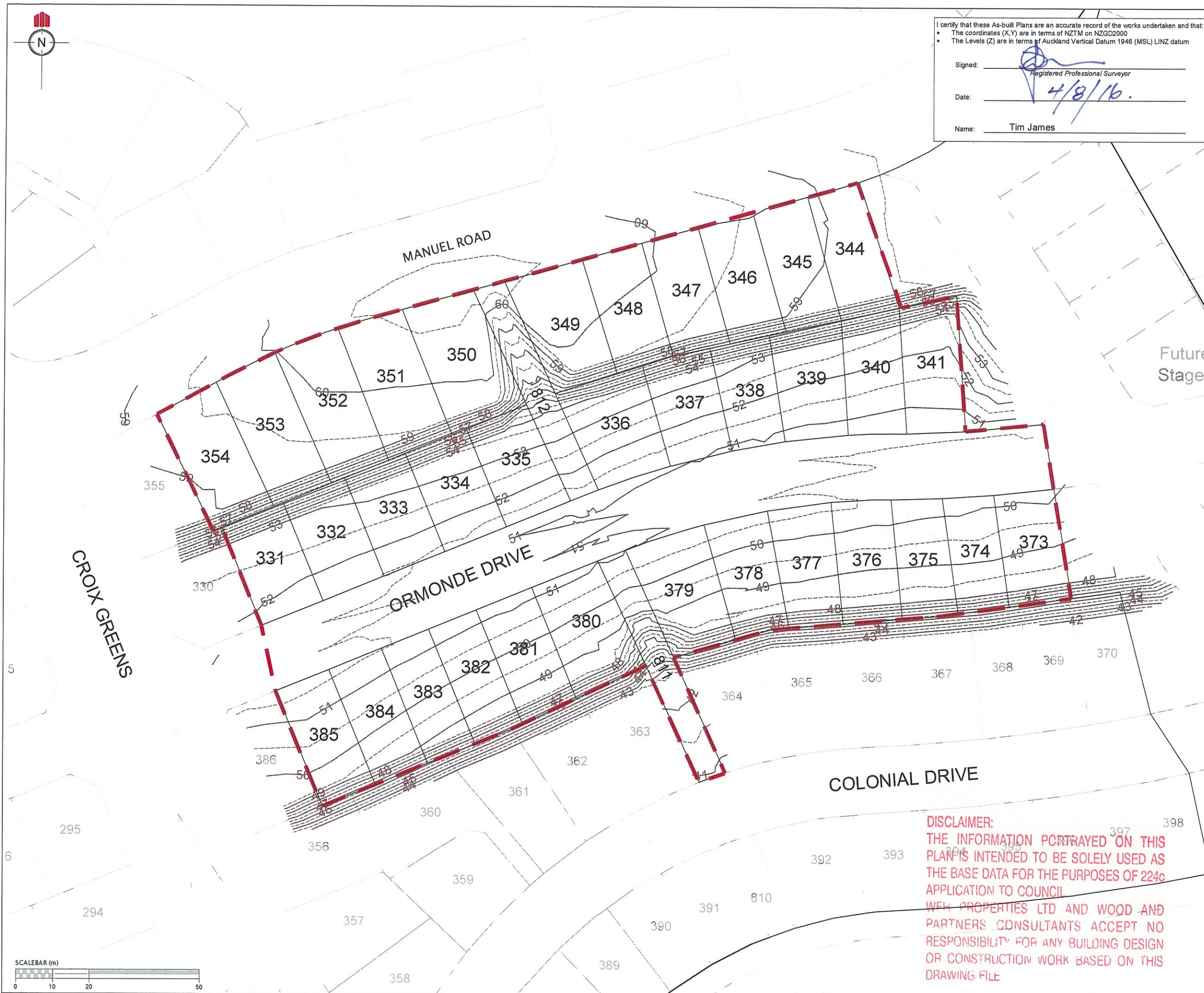
DISCLAIMER:
THE INFORMATION PORTRAYED ON THIS
PLAN IS INTENDED TO BE SOLELY USED AS
THE BASE DATA FOR THE PURPOSES OF 224c
APPLICATION TO COUNCIL
WFH PROPERTIES LTD AND WOOD AND
PARTNERS CONSULTANTS ACCEPT NO
RESPONSIBILITY FOR ANY BUILDING DESIGN
OR CONSTRUCTION WORK BASED ON THIS
DRAWING FILE



LOCATION PLAN

NOT TO SCALE







I certify that these As-built Plans are an accurate record of the works undertaken and that:

- The coordinates (X,Y) are in terms of NZTM on NZGD2000
- The Levels (Z) are in terms of Auckland Vertical Datum 1946 (MSL) LINZ datum

Signed: _____
Registered Professional Surveyor
Date: _____
Name: Tim James

REVISION DETAILS		NAME	DATE
1. DRAWING ISSUED		AAC	3/08/2016

NOTES

1. CONTOURS ARE AT 1.0 METRE INTERVALS

LEGEND	
	ZERO CONTOUR
	CUT CONTOUR
	FILL CONTOUR
	STAGE BOUNDARIES
	LOT BOUNDARIES

CLIENT:

WFH
PROPERTIES

WOODS
Engineers. Surveyors. Planners.

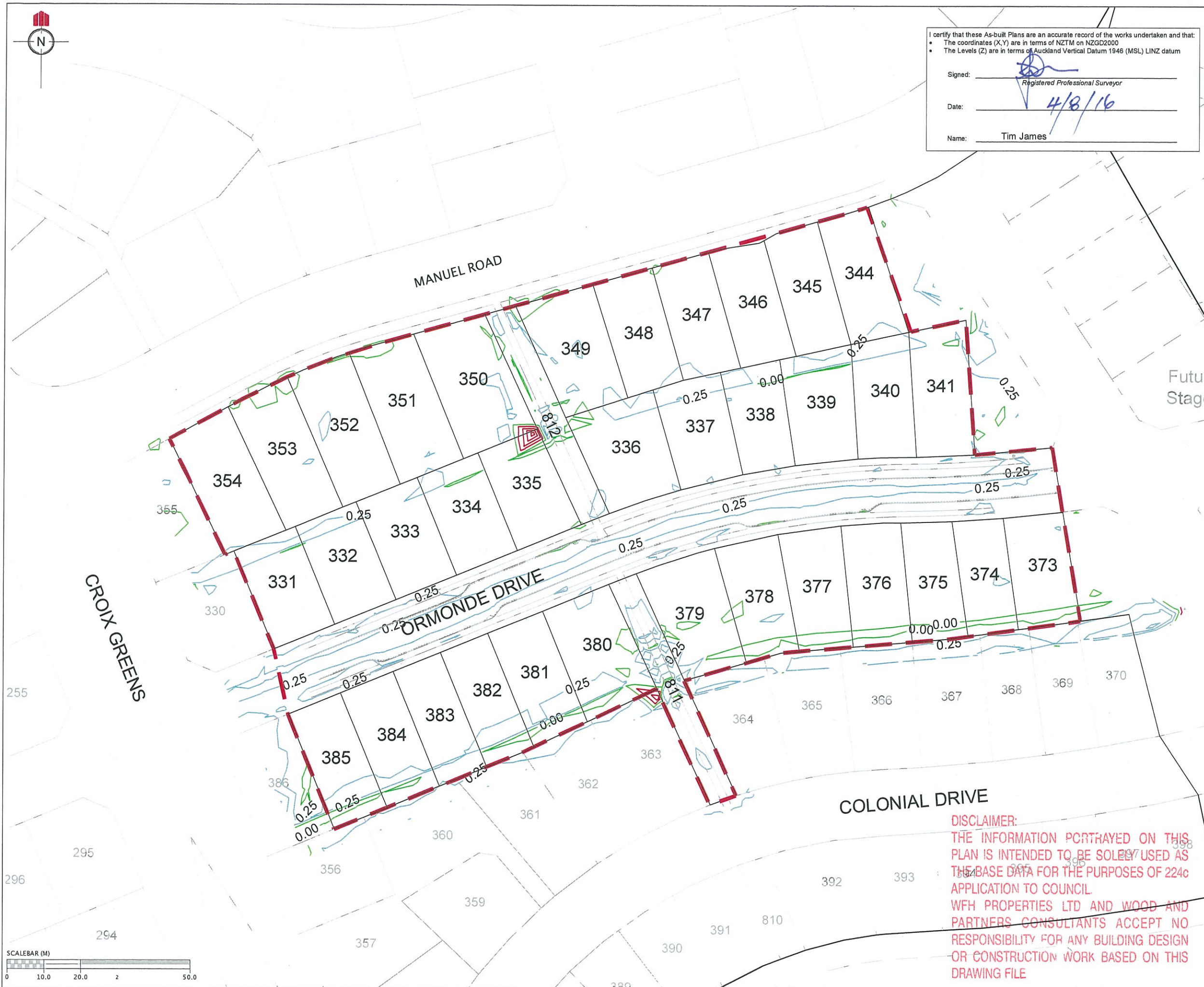
**MILLWATER
PRECINCT 2
STAGE 3A**

**CUT/FILL CONTOUR AS-BUILT
ORIGINAL SURFACE -
EARTHWORKS SURFACE**

AUCKLAND COUNCIL

DESIGNED: SB	ASBUILT
CHECKED:	DRAWN: AAC
APPROVED:	SURVEYED: WOODS
JOB NUMBER: 33210	SCALE: 1:1000 @ A3
ISSUED: AUG 2016	
DWG. NO. 33210-03A-AB-110	REV. 1

DISCLAIMER:
THE INFORMATION PORTRAYED ON THIS
PLAN IS INTENDED TO BE SOLELY USED AS
THE BASE DATA FOR THE PURPOSES OF 224c
APPLICATION TO COUNCIL.
WFH PROPERTIES LTD AND WOOD AND
PARTNERS CONSULTANTS ACCEPT NO
RESPONSIBILITY FOR ANY BUILDING DESIGN
OR CONSTRUCTION WORK BASED ON THIS
DRAWING FILE.



I certify that these As-built Plans are an accurate record of the works undertaken and that:

- The coordinates (X,Y) are in terms of NZTM on NZGD2000
- The Levels (Z) are in terms of Auckland Vertical Datum 1946 (MSL) LINZ datum

Signed: _____
Registered Professional Surveyor

Date: _____ 4/8/16

Name: _____ Tim James

REVISION DETAILS		NAME	DATE
1.	DRAWING ISSUED	AAC	3/08/2016

NOTES

1. CONTOURS ARE AT 0.25 METRE INTERVALS

LEGEND	
	ZERO CONTOUR
	CUT CONTOUR
	FILL CONTOUR
	STAGE BOUNDARIES
	LOT BOUNDARIES



**MILLWATER
PRECINCT 2
STAGE 3A**

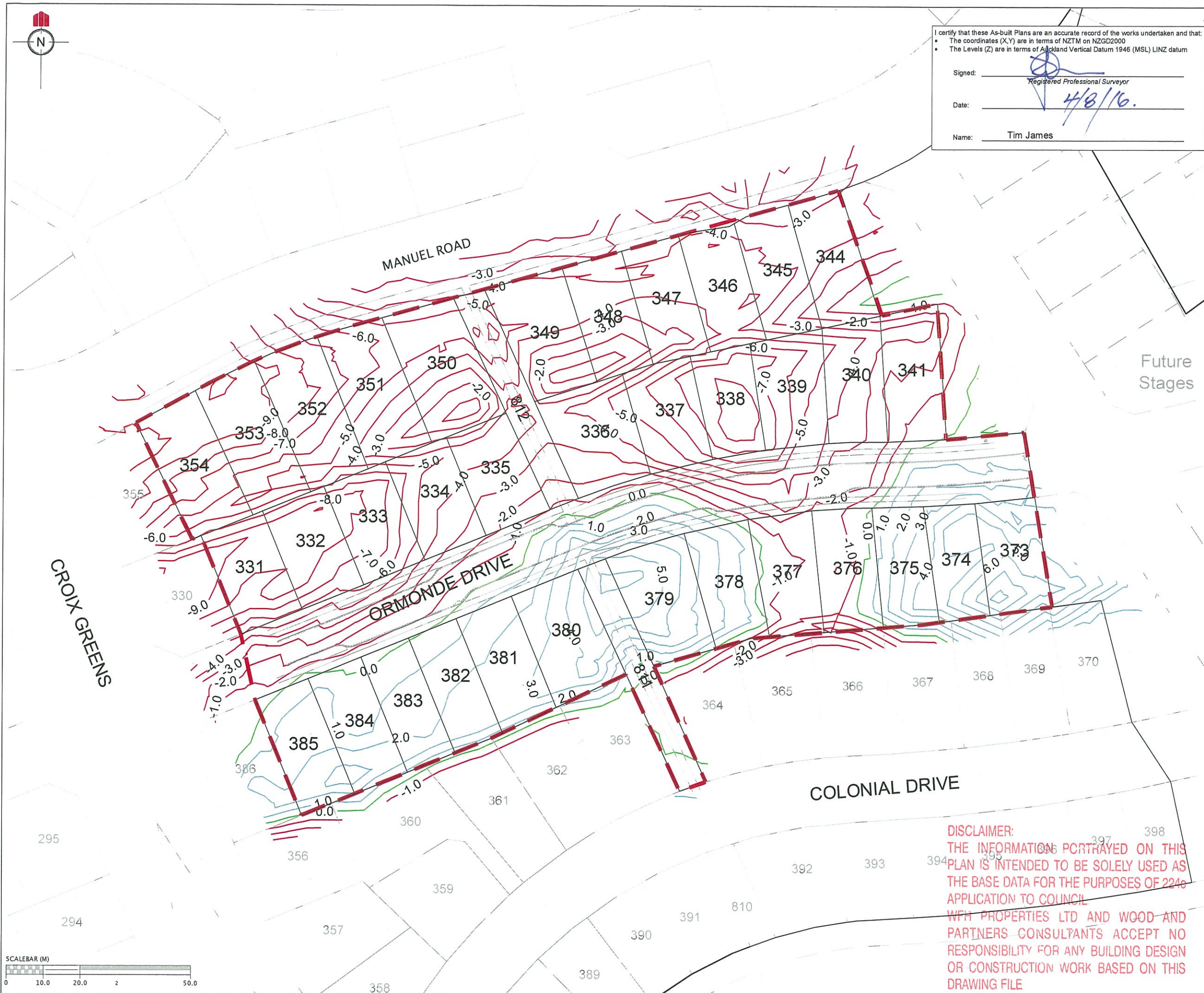
CUT/FILL CONTOUR AS-BUILT
EARTHWORKS SURFACE - FINAL
SURFACE

AUCKLAND COUNCIL

DESIGNED: SB	ASBUILT
CHECKED:	DRAWN: AAC
APPROVED:	SURVEYED: WOODS
JOB NUMBER: 33210	SCALE: 1:1000 @ A3
ISSUED: AUG 2016	
DWG. NO. 33210-03A-AB-111	REV. 1

DISCLAIMER:
THE INFORMATION PORTRAYED ON THIS
PLAN IS INTENDED TO BE SOLELY USED AS
THE BASE DATA FOR THE PURPOSES OF 224c
APPLICATION TO COUNCIL.
WFH PROPERTIES LTD AND WOOD AND
PARTNERS CONSULTANTS ACCEPT NO
RESPONSIBILITY FOR ANY BUILDING DESIGN
OR CONSTRUCTION WORK BASED ON THIS
DRAWING FILE





I certify that these As-built Plans are an accurate record of the works undertaken and that:

- The coordinates (X,Y) are in terms of NZTM on NZGD2000
- The Levels (Z) are in terms of Auckland Vertical Datum 1946 (MSL) LINZ datum

Signed: _____
Registered Professional Surveyor
Date: _____ 4/8/16.
Name: _____ Tim James

REVISION DETAILS		NAME	DATE
1.	DRAWING ISSUED	AAC	3/08/2016

NOTES

1. CONTOURS ARE AT 1.0 METRE INTERVALS

LEGEND	
	ZERO CONTOUR
	CUT CONTOUR
	FILL CONTOUR
	STAGE BOUNDARIES
	LOT BOUNDARIES

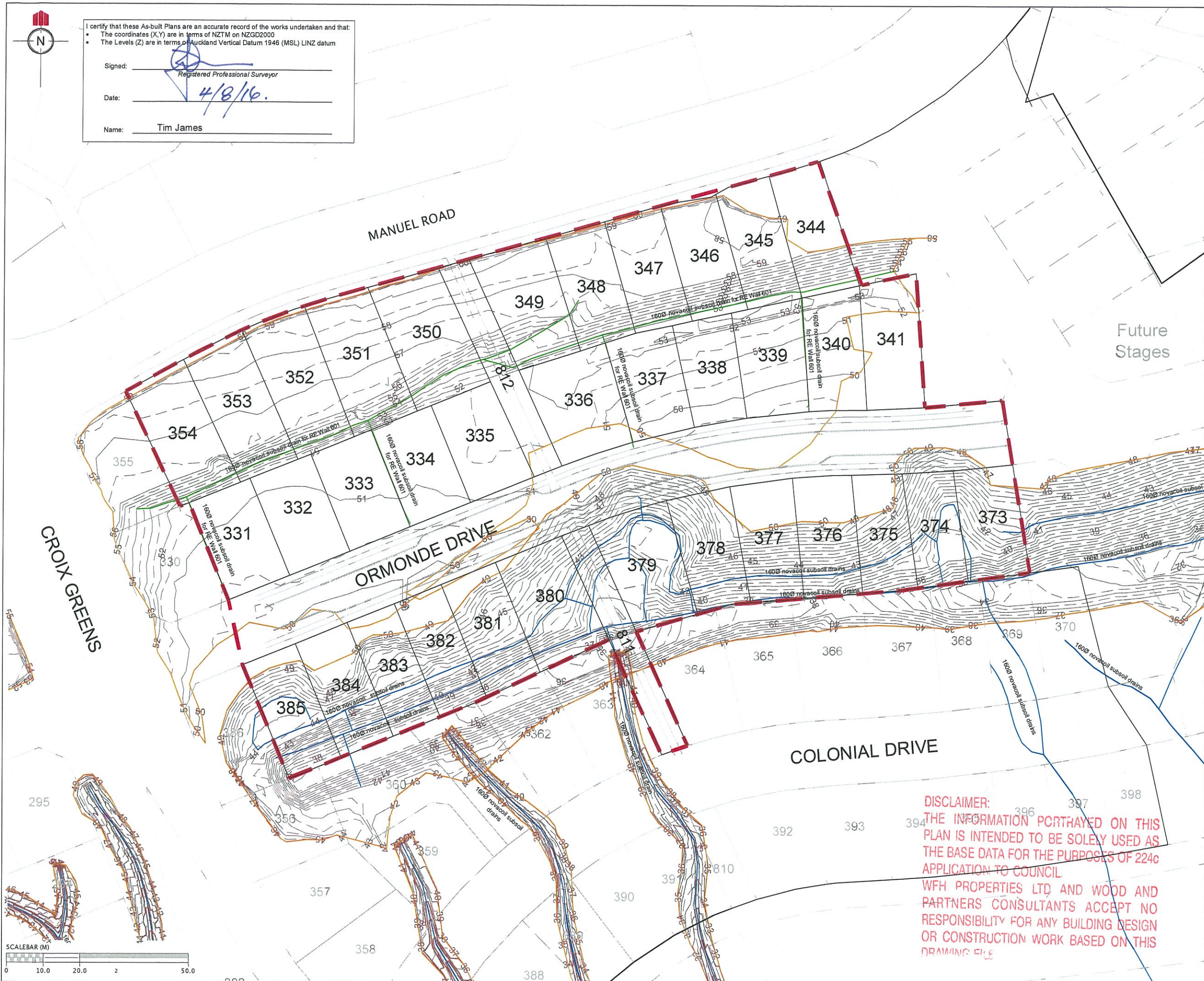
CLIENT:

**MILLWATER
PRECINCT 2
STAGE 3A**

**CUT/FILL CONTOUR AS-BUILT
ORIGINAL SURFACE - FINAL
SURFACE**

AUCKLAND COUNCIL	
DESIGNED: SB	ASBUILT
CHECKED:	DRAWN: AAC
APPROVED:	SURVEYED: WOODS
JOB NUMBER: 33210	SCALE: 1:1000 @ A3
ISSUED: AUG 2016	
DWG. NO. 33210-03A-AB-112	REV. 1

DISCLAIMER:
THE INFORMATION PORTRAYED ON THIS
PLAN IS INTENDED TO BE SOLELY USED AS
THE BASE DATA FOR THE PURPOSES OF 2240
APPLICATION TO COUNCIL
WFH PROPERTIES LTD AND WOOD AND
PARTNERS CONSULTANTS ACCEPT NO
RESPONSIBILITY FOR ANY BUILDING DESIGN
OR CONSTRUCTION WORK BASED ON THIS
DRAWING FILE



I certify that these As-built Plans are an accurate record of the works undertaken and that:

- The coordinates (X,Y) are in terms of NZTM on NZGD2000
- The Levels (Z) are in terms of Auckland Vertical Datum 1946 (MSL) LINZ datum

Signed: _____
Registered Professional Surveyor

Date: 4/8/16.

Name: Tim James

REVISION DETAILS		NAME	DATE
1.	DRAWING ISSUED	AAC	3/08/2016

NOTES

1. CONTOURS ARE AT 0.5 METRE INTERVALS

LEGEND	
	NOVACOIL SUBSOIL DRAINS
	REINFORCED EARTH & RETAINING WALL SUBSOIL DRAINS
	EXISTING STORMWATER DRAINAGE
	NEW STORMWATER DRAINAGE
	STAGE BOUNDARIES
	LOT BOUNDARIES
	CONTOURS
	SHEAR KEY & UNDERCUT AREAS



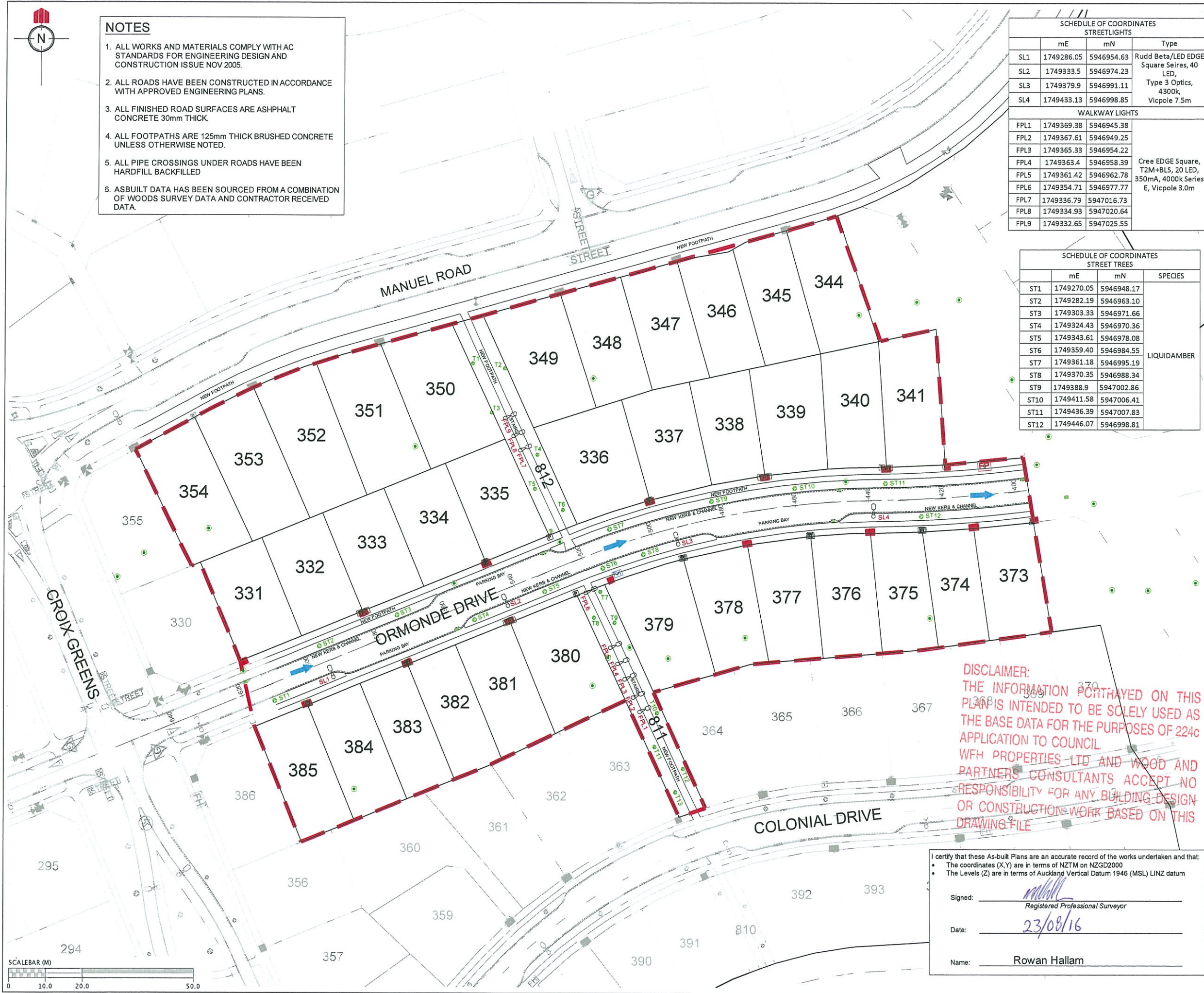
**MILLWATER
PRECINCT 2
STAGE 3A**

**SHEAR KEY, UNDERCUTS &
SUBSOIL DRAINS
AS-BUILT PLAN**

AUCKLAND COUNCIL

DESIGNED: SB	ASBUILT
CHECKED:	DRAWN: AAC
APPROVED:	SURVEYED: HICKS
JOB NUMBER: 33210	SCALE: 1:1000 @ A3
ISSUED: AUG 2016	
DWG. NO. 33210-03A-AB-120	REV. 1

DISCLAIMER:
THE INFORMATION PORTRAYED ON THIS PLAN IS INTENDED TO BE SOLELY USED AS THE BASE DATA FOR THE PURPOSES OF 224c APPLICATION TO COUNCIL.
WFH PROPERTIES LTD AND WOOD AND PARTNERS CONSULTANTS ACCEPT NO RESPONSIBILITY FOR ANY BUILDING DESIGN OR CONSTRUCTION WORK BASED ON THIS DRAWING FILE



- NOTES**
1. ALL WORKS AND MATERIALS COMPLY WITH AC STANDARDS FOR ENGINEERING DESIGN AND CONSTRUCTION ISSUE NOV 2005.
 2. ALL ROADS HAVE BEEN CONSTRUCTED IN ACCORDANCE WITH APPROVED ENGINEERING PLANS.
 3. ALL FINISHED ROAD SURFACES ARE ASPHALT CONCRETE 30mm THICK.
 4. ALL FOOTPATHS ARE 125mm THICK BRUSHED CONCRETE UNLESS OTHERWISE NOTED.
 5. ALL PIPE CROSSINGS UNDER ROADS HAVE BEEN HARDFILL BACKFILLED
 6. ASBUILT DATA HAS BEEN SOURCED FROM A COMBINATION OF WOODS SURVEY DATA AND CONTRACTOR RECEIVED DATA.

SCHEDULE OF COORDINATES STREETLIGHTS			
	mE	mN	Type
SL1	1749286.05	5946954.63	Rudd Beta/LED EDGE Square Seires, 40 LED, Type 3 Optics, 4300k, Vicolpe 7.5m
SL2	1749333.5	5946974.23	
SL3	1749379.9	5946991.11	
SL4	1749433.13	5946998.85	
WALKWAY LIGHTS			
FPL1	1749369.38	5946945.38	Cree EDGE Square T2M+BS, 20 LED, 350mA, 4000k Series E, Vicolpe 3.0m
FPL2	1749367.61	5946949.25	
FPL3	1749365.33	5946954.22	
FPL4	1749363.4	5946958.39	
FPL5	1749361.42	5946962.78	
FPL6	1749354.71	5946977.77	
FPL7	1749336.79	5947016.73	
FPL8	1749334.93	5947020.64	
FPL9	1749332.65	5947025.55	

SCHEDULE OF COORDINATES STREET TREES			
	mE	mN	SPECIES
ST1	1749270.05	5946948.17	LIQUIDAMBER
ST2	1749282.19	5946963.10	
ST3	1749303.33	5946971.66	
ST4	1749324.43	5946970.36	
ST5	1749343.61	5946978.08	
ST6	1749359.40	5946984.55	
ST7	1749361.18	5946995.19	
ST8	1749370.35	5946988.34	
ST9	1749388.9	5947002.86	
ST10	1749411.58	5947006.41	
ST11	1749436.39	5947007.83	
ST12	1749446.07	5946998.81	

REVISION DETAILS		NAME	DATE
1.	DRAWING ISSUED	AAC	22/08/2016

- LEGEND**
- STREET LIGHT
 - ROAD NAME SIGN
 - CATCH PIT/BERM SUMP
 - STORMWATER MANHOLE
 - RG-6 SIGN (GIVE WAY)
 - STREET TREE
 - STAGE EXTENTS
 - SS BOUNDARY KIT
 - SS ISOLATION VALVE
 - SS FLUSHING POINT
 - SS AIR VALVE
 - WATER SLUICE VALVE
 - WATER PEET VALVE
 - WATER FIRE HYDRANT
 - GAS METER
 - TELECOMMUNICATIONS MANHOLE



**MILLWATER
PRECINCT 2
STAGE 3A**

**ROADING AS-BUILT
Sheet 1 of 2**

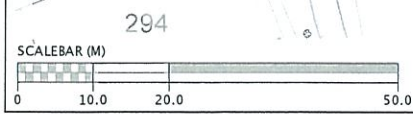
AUCKLAND COUNCIL	
DESIGNED: SB	ASBUILT
CHECKED: AC	DRAWN: AAC
APPROVED: MCH	SURVEYED: WOODS
JOB NUMBER: 33210	SCALE: 1:1000 @ A3
ISSUED: AUG 2016	
DWG. NO. 33210-03A-AB-200	REV. 1

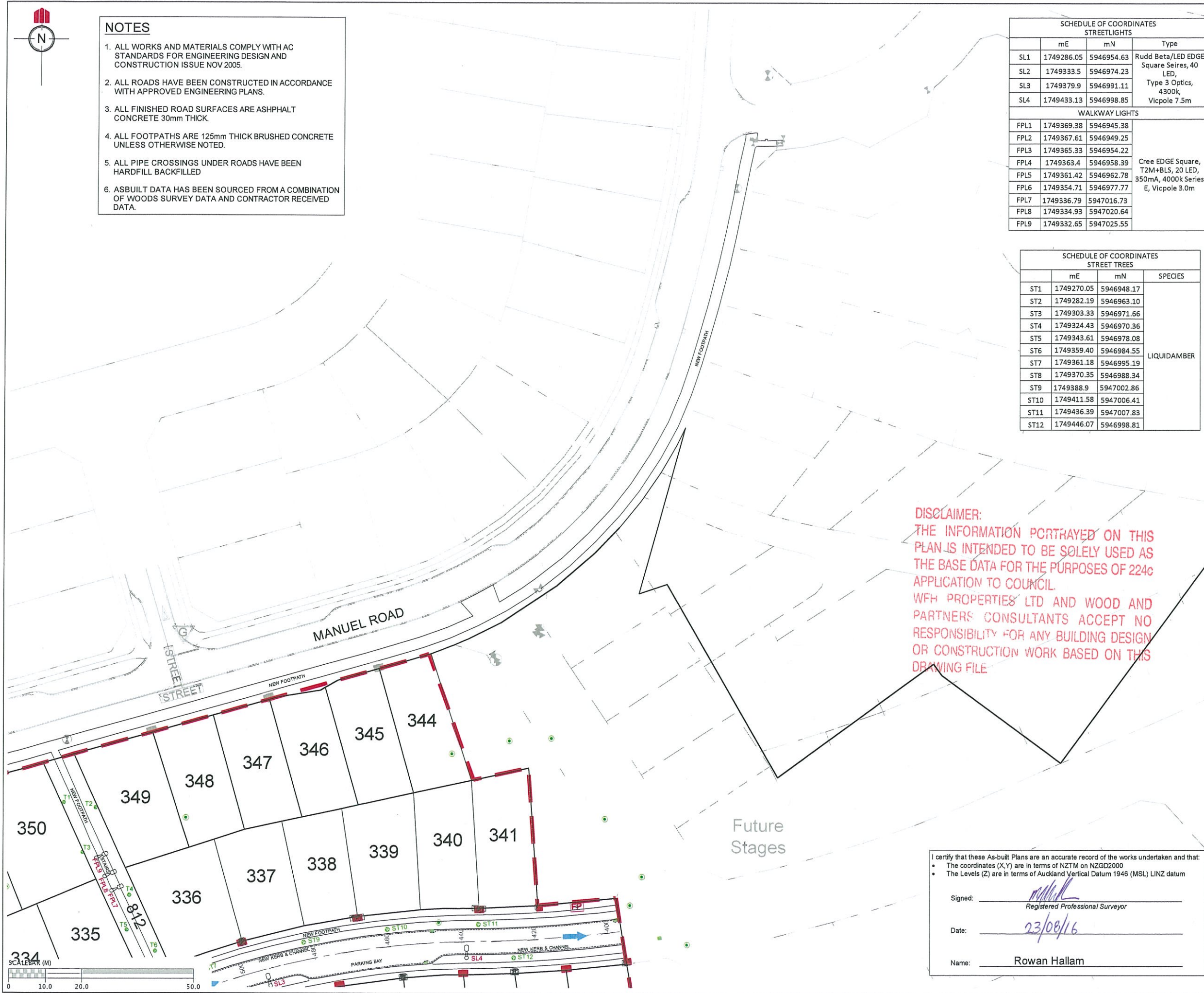
DISCLAIMER:
THE INFORMATION PORTRAYED ON THIS PLAN IS INTENDED TO BE SOLELY USED AS THE BASE DATA FOR THE PURPOSES OF 224c APPLICATION TO COUNCIL.
WFH PROPERTIES LTD AND WOOD AND PARTNERS CONSULTANTS ACCEPT NO RESPONSIBILITY FOR ANY BUILDING DESIGN OR CONSTRUCTION WORK BASED ON THIS DRAWING FILE

I certify that these As-built Plans are an accurate record of the works undertaken and that:

- The coordinates (X,Y) are in terms of NZTM on NZGD2000
- The Levels (Z) are in terms of Auckland Vertical Datum 1946 (MSL) LINZ datum

Signed: *Rowan Hallam*
Registered Professional Surveyor
Date: 23/08/16
Name: Rowan Hallam





- NOTES**
1. ALL WORKS AND MATERIALS COMPLY WITH AC STANDARDS FOR ENGINEERING DESIGN AND CONSTRUCTION ISSUE NOV 2005.
 2. ALL ROADS HAVE BEEN CONSTRUCTED IN ACCORDANCE WITH APPROVED ENGINEERING PLANS.
 3. ALL FINISHED ROAD SURFACES ARE ASPHALT CONCRETE 30mm THICK.
 4. ALL FOOTPATHS ARE 125mm THICK BRUSHED CONCRETE UNLESS OTHERWISE NOTED.
 5. ALL PIPE CROSSINGS UNDER ROADS HAVE BEEN HARDFILL BACKFILLED
 6. ASBUILT DATA HAS BEEN SOURCED FROM A COMBINATION OF WOODS SURVEY DATA AND CONTRACTOR RECEIVED DATA.

SCHEDULE OF COORDINATES STREETLIGHTS			
	mE	mN	Type
SL1	1749286.05	5946954.63	Rudd Beta/LED EDGE Square Seires, 40 LED, Type 3 Optics, 4300k, Vicpole 7.5m
SL2	1749333.5	5946974.23	
SL3	1749379.9	5946991.11	
SL4	1749433.13	5946998.85	
WALKWAY LIGHTS			
FPL1	1749369.38	5946945.38	Cree EDGE Square T2M+BLS, 20 LED, 350mA, 4000k Series E, Vicpole 3.0m
FPL2	1749367.61	5946949.25	
FPL3	1749365.33	5946954.22	
FPL4	1749363.4	5946958.39	
FPL5	1749361.42	5946962.78	
FPL6	1749354.71	5946977.77	
FPL7	1749336.79	5947016.73	
FPL8	1749334.93	5947020.64	
FPL9	1749332.65	5947025.55	

SCHEDULE OF COORDINATES STREET TREES			
	mE	mN	SPECIES
ST1	1749270.05	5946948.17	LIQUIDAMBER
ST2	1749282.19	5946963.10	
ST3	1749303.33	5946971.66	
ST4	1749324.43	5946970.36	
ST5	1749343.61	5946978.08	
ST6	1749359.40	5946984.55	
ST7	1749361.18	5946995.19	
ST8	1749370.35	5946988.34	
ST9	1749388.9	5947002.86	
ST10	1749411.58	5947006.41	
ST11	1749436.39	5947007.83	
ST12	1749446.07	5946998.81	

REVISION DETAILS		NAME	DATE
1.	DRAWING ISSUED	AAC	22/08/2016

- LEGEND**
- STREET LIGHT
 - ROAD NAME SIGN
 - CATCH PIT/BERM SUMP
 - STORMWATER MANHOLE
 - RG-6 SIGN (GIVE WAY)
 - STREET TREE
 - STAGE EXTENTS
 - SS BOUNDARY KIT
 - SS ISOLATION VALVE
 - SS FLUSHING POINT
 - SS AIR VALVE
 - WATER SLUICE VALVE
 - WATER PEET VALVE
 - WATER FIRE HYDRANT
 - GAS METER
 - TELECOMMUNICATIONS MANHOLE

DISCLAIMER:
THE INFORMATION PORTRAYED ON THIS PLAN IS INTENDED TO BE SOLELY USED AS THE BASE DATA FOR THE PURPOSES OF 224c APPLICATION TO COUNCIL.
WFH PROPERTIES LTD AND WOOD AND PARTNERS CONSULTANTS ACCEPT NO RESPONSIBILITY FOR ANY BUILDING DESIGN OR CONSTRUCTION WORK BASED ON THIS DRAWING FILE

CLIENT:

WFH PROPERTIES

WOODS
Engineers. Surveyors. Planners.

**MILLWATER
PRECINCT 2
STAGE 3A**

**ROADING AS-BUILT
Sheet 2 of 2**

AUCKLAND COUNCIL

DESIGNED: SB	ASBUILT
CHECKED: AC	DRAWN: AAC
APPROVED: M.H.	SURVEYED: WOODS
JOB NUMBER: 33210	SCALE: 1:1000 @ A3
ISSUED: AUG 2016	
DWG. NO. 33210-03A-AB-201	REV. 1

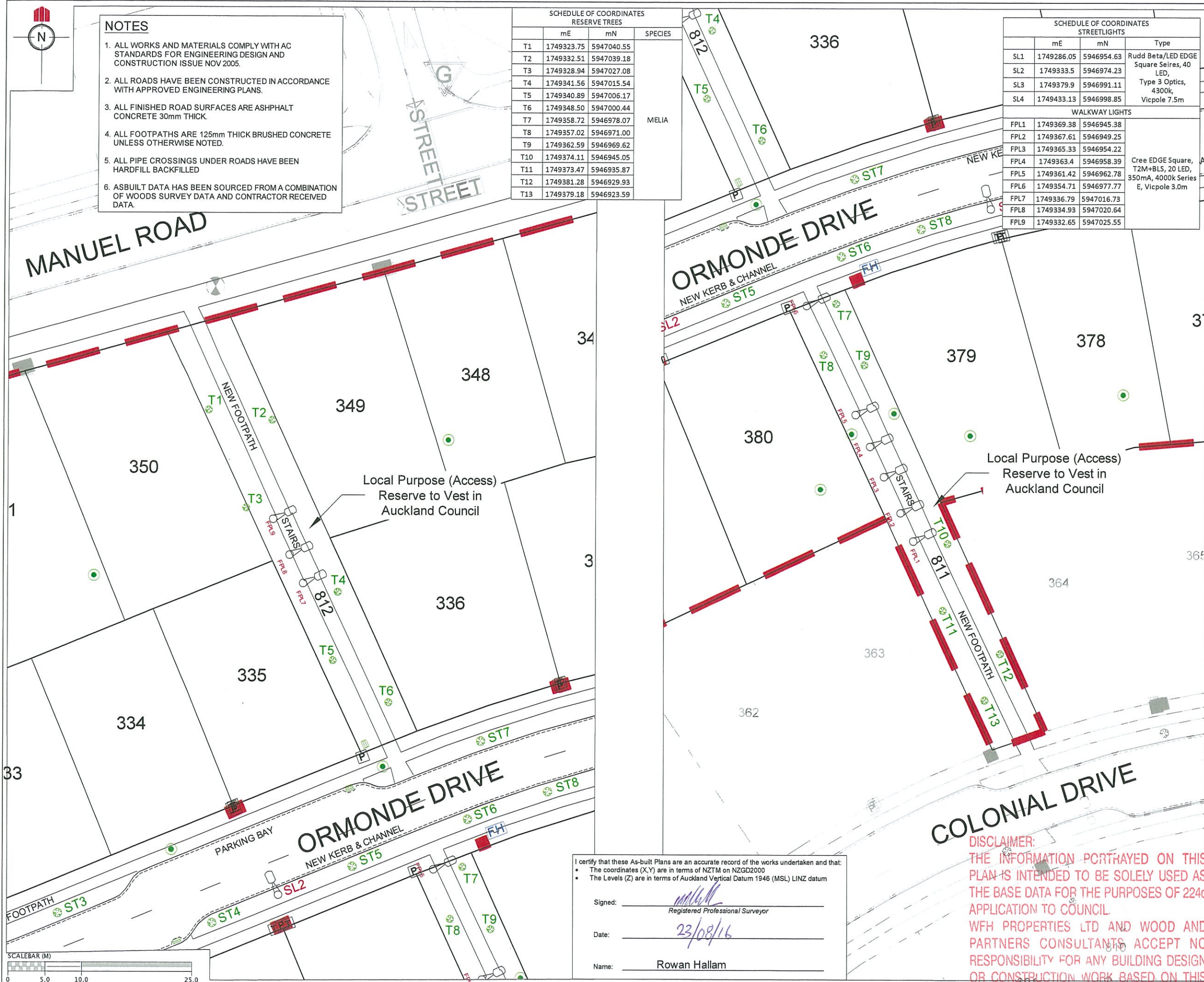
I certify that these As-built Plans are an accurate record of the works undertaken and that:

- The coordinates (X,Y) are in terms of NZTM on NZGD2000
- The Levels (Z) are in terms of Auckland Vertical Datum 1946 (MSL) LINZ datum

Signed: *Rowan Hallam*
Registered Professional Surveyor

Date: 23/08/16

Name: Rowan Hallam



- NOTES**
- 1. ALL WORKS AND MATERIALS COMPLY WITH AC STANDARDS FOR ENGINEERING DESIGN AND CONSTRUCTION ISSUE NOV 2005.
 - 2. ALL ROADS HAVE BEEN CONSTRUCTED IN ACCORDANCE WITH APPROVED ENGINEERING PLANS.
 - 3. ALL FINISHED ROAD SURFACES ARE ASPHALT CONCRETE 30mm THICK.
 - 4. ALL FOOTPATHS ARE 125mm THICK BRUSHED CONCRETE UNLESS OTHERWISE NOTED.
 - 5. ALL PIPE CROSSINGS UNDER ROADS HAVE BEEN HARDFILL BACKFILLED
 - 6. ASBUILT DATA HAS BEEN SOURCED FROM A COMBINATION OF WOODS SURVEY DATA AND CONTRACTOR RECEIVED DATA.

SCHEDULE OF COORDINATES RESERVE TREES			
	mE	mN	SPECIES
T1	1749323.75	5947040.55	MELIA
T2	1749332.51	5947039.18	
T3	1749328.94	5947027.08	
T4	1749341.56	5947015.54	
T5	1749340.89	5947006.17	
T6	1749348.50	5947000.44	
T7	1749358.72	5946978.07	
T8	1749357.02	5946971.00	
T9	1749362.59	5946969.62	
T10	1749374.11	5946945.05	
T11	1749373.47	5946935.87	
T12	1749381.28	5946929.93	
T13	1749379.18	5946923.59	

SCHEDULE OF COORDINATES STREETLIGHTS			
	mE	mN	Type
SL1	1749286.05	5946954.63	Rudd Beta/LED EDGE Square Seires, 40 LED, Type 3 Optics, 4300k, Vicpole 7.5m
SL2	1749333.5	5946974.23	
SL3	1749379.9	5946991.11	
SL4	1749433.13	5946998.85	
WALKWAY LIGHTS			
FPL1	1749369.38	5946945.38	Cree EDGE Square, T2M+BSL, 20 LED, 350mA, 4000k Series E, Vicpole 3.0m
FPL2	1749367.61	5946949.25	
FPL3	1749365.33	5946954.22	
FPL4	1749363.4	5946958.39	
FPL5	1749361.42	5946962.78	
FPL6	1749354.71	5946977.77	
FPL7	1749336.79	5947016.73	
FPL8	1749334.93	5947020.64	
FPL9	1749332.65	5947025.55	

REVISION DETAILS		NAME	DATE
1.	DRAWING ISSUED	AAC	22/08/2016

- LEGEND**
- STREET LIGHT
 - ROAD NAME SIGN
 - CATCH PIT/BERM SUMP
 - STORMWATER MANHOLE
 - RG-6 SIGN (GIVE WAY)
 - STREET TREE
 - STAGE EXTENTS
 - SS BOUNDARY KIT
 - SS ISOLATION VALVE
 - SS FLUSHING POINT
 - SS AIR VALVE
 - WATER SLUICE VALVE
 - WATER PEET VALVE
 - WATER FIRE HYDRANT
 - GAS METER
 - TELECOMMUNICATIONS MANHOLE



MILLWATER
PRECINCT 2
STAGE 3A

RESERVE AS-BUILT

AUCKLAND COUNCIL

DESIGNED: SB	ASBUILT
CHECKED: AC	DRAWN: AAC
APPROVED: MCH	SURVEYED: WOODS
JOB NUMBER: 33210	SCALE: 1:1000 @ A3
ISSUED: AUG 2016	
DWG. NO. 33210-03A-AB-250	REV. 1

I certify that these As-built Plans are an accurate record of the works undertaken and that:

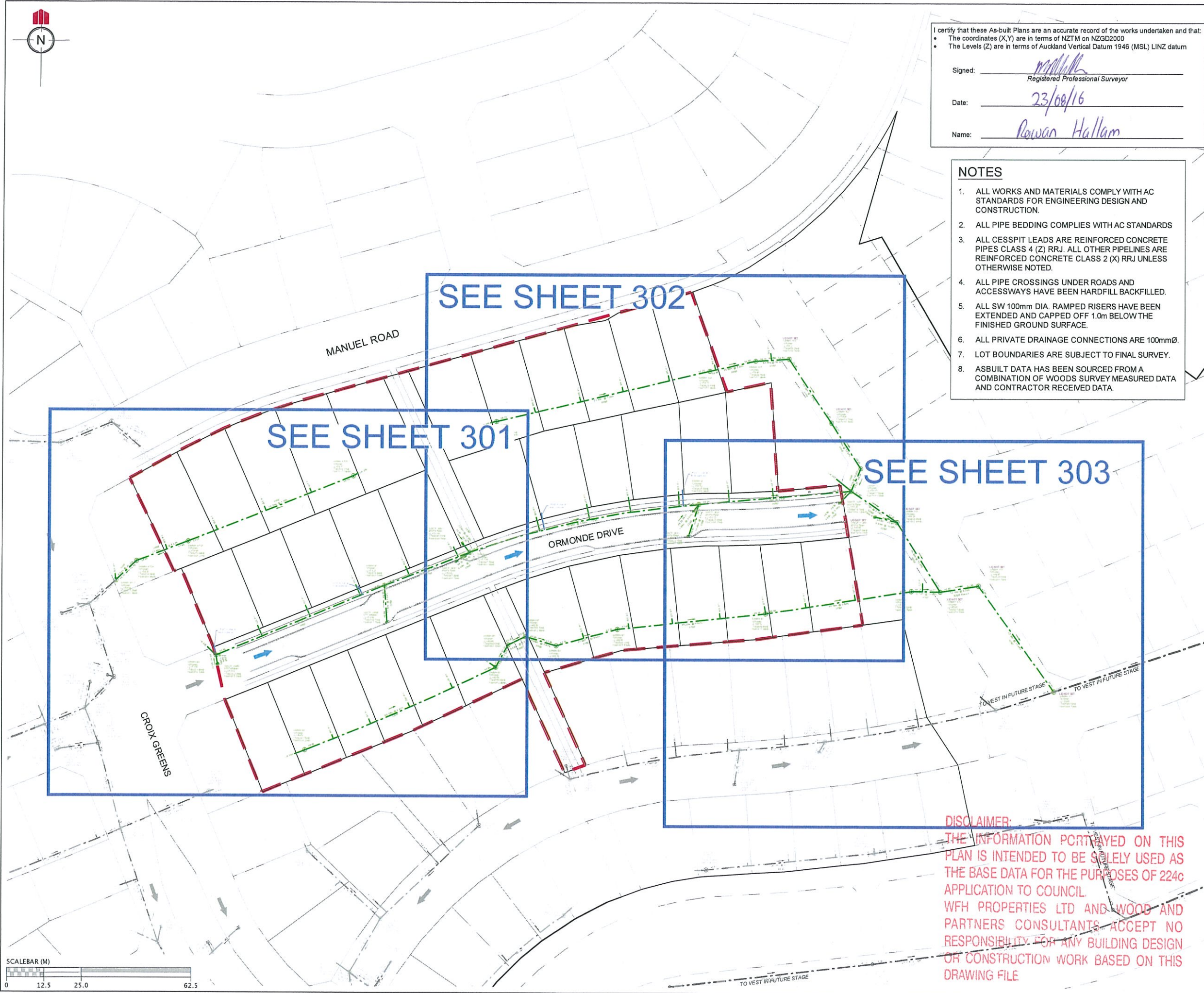
- The coordinates (X,Y) are in terms of NZTM on NZGD2000
- The Levels (Z) are in terms of Auckland Vertical Datum 1946 (MSL) LINZ datum

Signed: Registered Professional Surveyor

Date: 23/08/16

Name: Rowan Hallam

DISCLAIMER:
THE INFORMATION PORTRAYED ON THIS PLAN IS INTENDED TO BE SOLELY USED AS THE BASE DATA FOR THE PURPOSES OF 2240 APPLICATION TO COUNCIL.
WFH PROPERTIES LTD AND WOOD AND PARTNERS CONSULTANTS ACCEPT NO RESPONSIBILITY FOR ANY BUILDING DESIGN OR CONSTRUCTION WORK BASED ON THIS DRAWING FILE



I certify that these As-built Plans are an accurate record of the works undertaken and that:

- The coordinates (X,Y) are in terms of NZTM on NZGD2000
- The Levels (Z) are in terms of Auckland Vertical Datum 1946 (MSL) LINZ datum

Signed: Rowan Hallam
Registered Professional Surveyor

Date: 23/08/16

Name: Rowan Hallam

- NOTES**
- ALL WORKS AND MATERIALS COMPLY WITH AC STANDARDS FOR ENGINEERING DESIGN AND CONSTRUCTION.
 - ALL PIPE BEDDING COMPLIES WITH AC STANDARDS
 - ALL CESSPIT LEADS ARE REINFORCED CONCRETE PIPES CLASS 4 (Z) RRJ. ALL OTHER PIPELINES ARE REINFORCED CONCRETE CLASS 2 (X) RRJ UNLESS OTHERWISE NOTED.
 - ALL PIPE CROSSINGS UNDER ROADS AND ACCESSWAYS HAVE BEEN HARDFILL BACKFILLED.
 - ALL SW 100mm DIA. RAMPED RISERS HAVE BEEN EXTENDED AND CAPPED OFF 1.0m BELOW THE FINISHED GROUND SURFACE.
 - ALL PRIVATE DRAINAGE CONNECTIONS ARE 100mmØ.
 - LOT BOUNDARIES ARE SUBJECT TO FINAL SURVEY.
 - ASBUILT DATA HAS BEEN SOURCED FROM A COMBINATION OF WOODS SURVEY MEASURED DATA AND CONTRACTOR RECEIVED DATA.

REVISION DETAILS		NAME	DATE
1.	DRAWING ISSUED	AAC	22/08/2016

LEGEND

STORMWATER MANHOLE

STORMWATER CESSPIT

STORMWATER DOUBLE CESSPIT

OVERLAND FLOW

NEW STORMWATER

EXISTING STORMWATER

SUBSOIL DRAINAGE

STAGE BOUNDARY

CLIENT:

WFH
PROPERTIES

WOODS
Engineers. Surveyors. Planners.

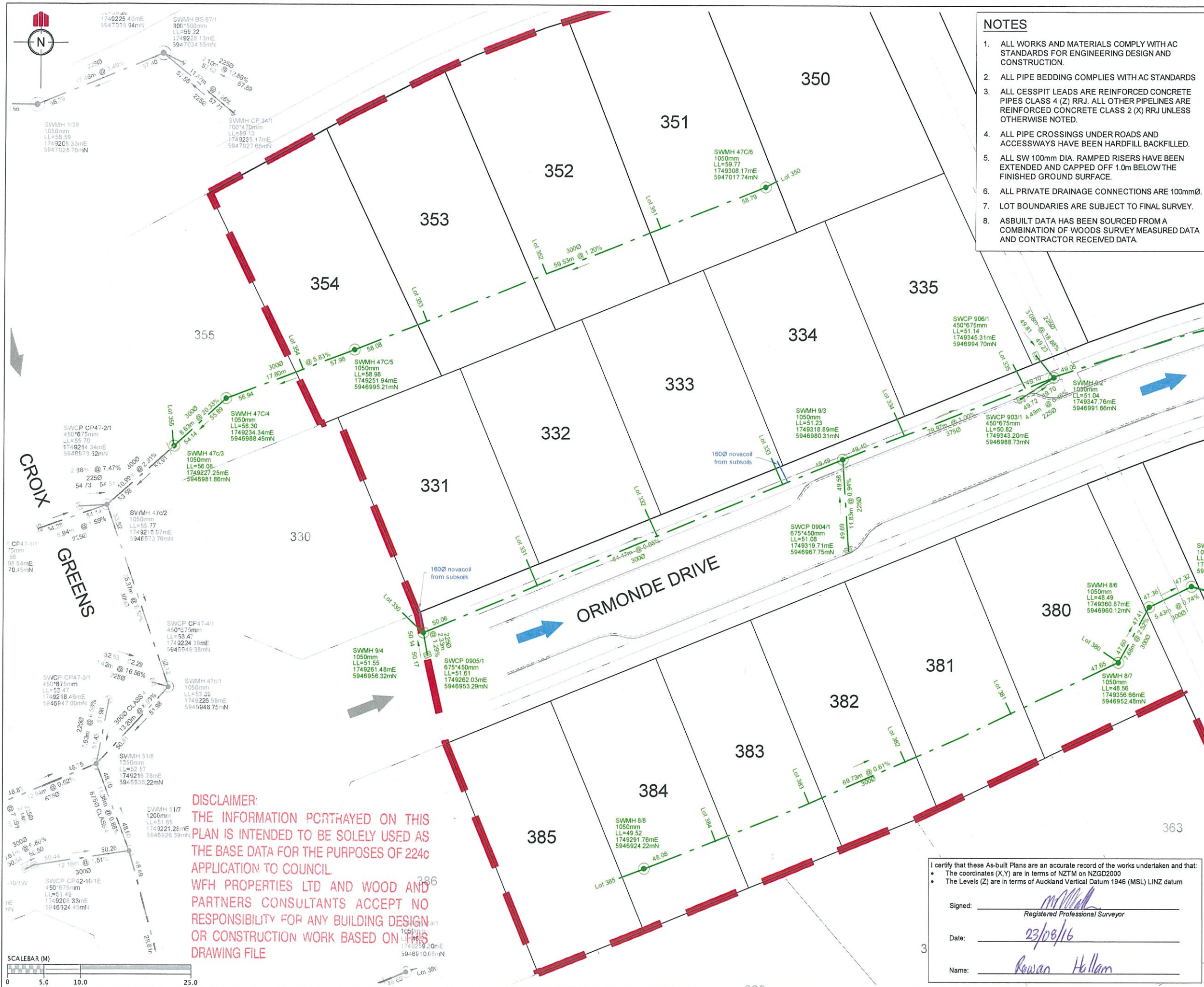
**MILLWATER
PRECINCT 2
STAGE 3A**

**STORMWATER AS-BUILT
OVERALL LAYOUT**
Sheet 1 of 4

AUCKLAND COUNCIL

DESIGNED: SB	ASBUILT
CHECKED: <u>AL</u>	DRAWN: AAC
APPROVED: <u>MDH</u>	SURVEYED: WOODS
JOB NUMBER: 33210	SCALE: 1:1250 @ A3
ISSUED: AUG 2016	
DWG. NO. 33210-3A-AB-300	REV. 1

DISCLAIMER:
THE INFORMATION PORTRAYED ON THIS PLAN IS INTENDED TO BE SOLELY USED AS THE BASE DATA FOR THE PURPOSES OF 224c APPLICATION TO COUNCIL. WFH PROPERTIES LTD AND WOODS AND PARTNERS CONSULTANTS ACCEPT NO RESPONSIBILITY FOR ANY BUILDING DESIGN OR CONSTRUCTION WORK BASED ON THIS DRAWING FILE



NOTES

1. ALL WORKS AND MATERIALS COMPLY WITH AC STANDARDS FOR ENGINEERING DESIGN AND CONSTRUCTION.
2. ALL PIPE BEDDING COMPLIES WITH AC STANDARDS
3. ALL CESSPIT LEADS ARE REINFORCED CONCRETE PIPES CLASS 4 (Z) RRJ. ALL OTHER PIPELINES ARE REINFORCED CONCRETE CLASS 2 (X) RRJ UNLESS OTHERWISE NOTED.
4. ALL PIPE CROSSINGS UNDER ROADS AND ACCESSWAYS HAVE BEEN HARDFILL BACKFILLED.
5. ALL SW 100mm DIA. RAMPED RISERS HAVE BEEN EXTENDED AND CAPPED OFF 1.0m BELOW THE FINISHED GROUND SURFACE.
6. ALL PRIVATE DRAINAGE CONNECTIONS ARE 100mmØ.
7. LOT BOUNDARIES ARE SUBJECT TO FINAL SURVEY.
8. ASBUILT DATA HAS BEEN SOURCED FROM A COMBINATION OF WOODS SURVEY MEASURED DATA AND CONTRACTOR RECEIVED DATA.

LEGEND

- STORMWATER MANHOLE
- STORMWATER CESSPIT
- STORMWATER DOUBLE CESSPIT
- OVERLAND FLOW
- NEW STORMWATER
- EXISTING STORMWATER
- SUBSOIL DRAINAGE
- STAGE BOUNDARY

REVISION DETAILS		NAME	DATE
1.	DRAWING ISSUED	AAC	22/08/16

CLIENT:

WFH
PROPERTIES

WOODS
Engineers. Surveyors. Planners.

MILLWATER
PRECINCT 2
STAGE 3A

STORMWATER AS-BUILT
Sheet 2 of 4

AUCKLAND COUNCIL

DESIGNED: SB	ASBUILT
CHECKED: AC	DRAWN: AAC
APPROVED: MCH	SURVEYED: WOODS
JOB NUMBER: 33210	SCALE: 1:500 @ A3
ISSUED: AUG 2016	
DWG. NO. 33210-3A-AB-301	REV. 1

DISCLAIMER:
THE INFORMATION PORTRAYED ON THIS
PLAN IS INTENDED TO BE SOLELY USED AS
THE BASE DATA FOR THE PURPOSES OF 224c
APPLICATION TO COUNCIL.
WFH PROPERTIES LTD AND WOOD AND
PARTNERS CONSULTANTS ACCEPT NO
RESPONSIBILITY FOR ANY BUILDING DESIGN
OR CONSTRUCTION WORK BASED ON THIS
DRAWING FILE

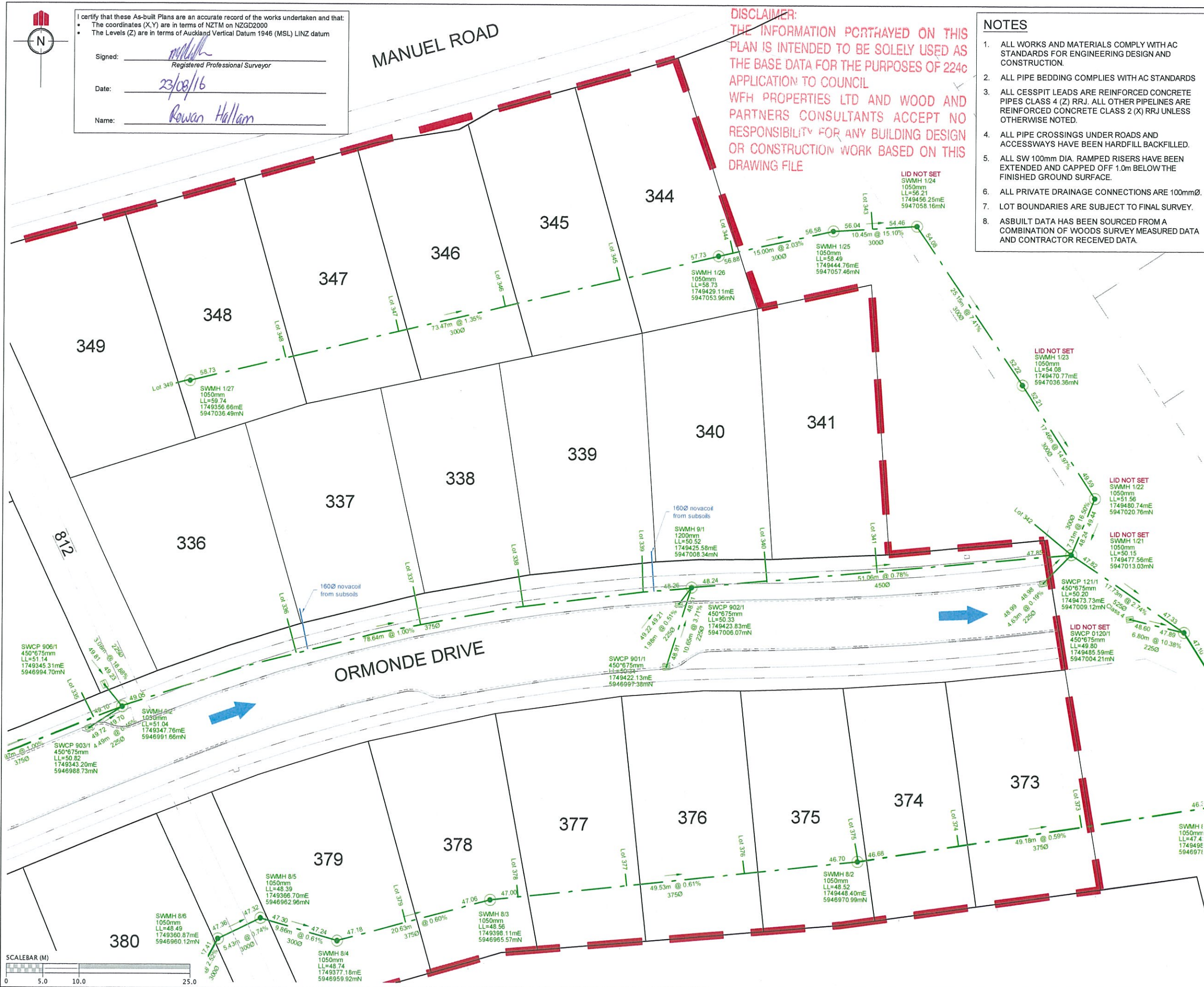
I certify that these As-built Plans are an accurate record of the works undertaken and that:

- The coordinates (X,Y) are in terms of NZTM on NZGD2000
- The Levels (Z) are in terms of Auckland Vertical Datum 1946 (MSL) LINZ datum

Signed: *M. Hallam*
Registered Professional Surveyor

Date: *23/08/16*

Name: *Rowan Hallam*



NOTES

1. ALL WORKS AND MATERIALS COMPLY WITH AC STANDARDS FOR ENGINEERING DESIGN AND CONSTRUCTION.
2. ALL PIPE BEDDING COMPLIES WITH AC STANDARDS
3. ALL CESSPIT LEADS ARE REINFORCED CONCRETE PIPES CLASS 4 (Z) RRJ. ALL OTHER PIPELINES ARE REINFORCED CONCRETE CLASS 2 (X) RRJ UNLESS OTHERWISE NOTED.
4. ALL PIPE CROSSINGS UNDER ROADS AND ACCESSWAYS HAVE BEEN HARDFILL BACKFILLED.
5. ALL SW 100mm DIA. RAMPED RISERS HAVE BEEN EXTENDED AND CAPPED OFF 1.0m BELOW THE FINISHED GROUND SURFACE.
6. ALL PRIVATE DRAINAGE CONNECTIONS ARE 100mmØ.
7. LOT BOUNDARIES ARE SUBJECT TO FINAL SURVEY.
8. ASBUILT DATA HAS BEEN SOURCED FROM A COMBINATION OF WOODS SURVEY MEASURED DATA AND CONTRACTOR RECEIVED DATA.

REVISION DETAILS		NAME	DATE
1. DRAWING ISSUED		AAC	22/08/16

LEGEND

- STORMWATER MANHOLE
- STORMWATER CESSPIT
- STORMWATER DOUBLE CESSPIT
- OVERLAND FLOW
- NEW STORMWATER
- EXISTING STORMWATER
- SUBSOIL DRAINAGE
- STAGE BOUNDARY

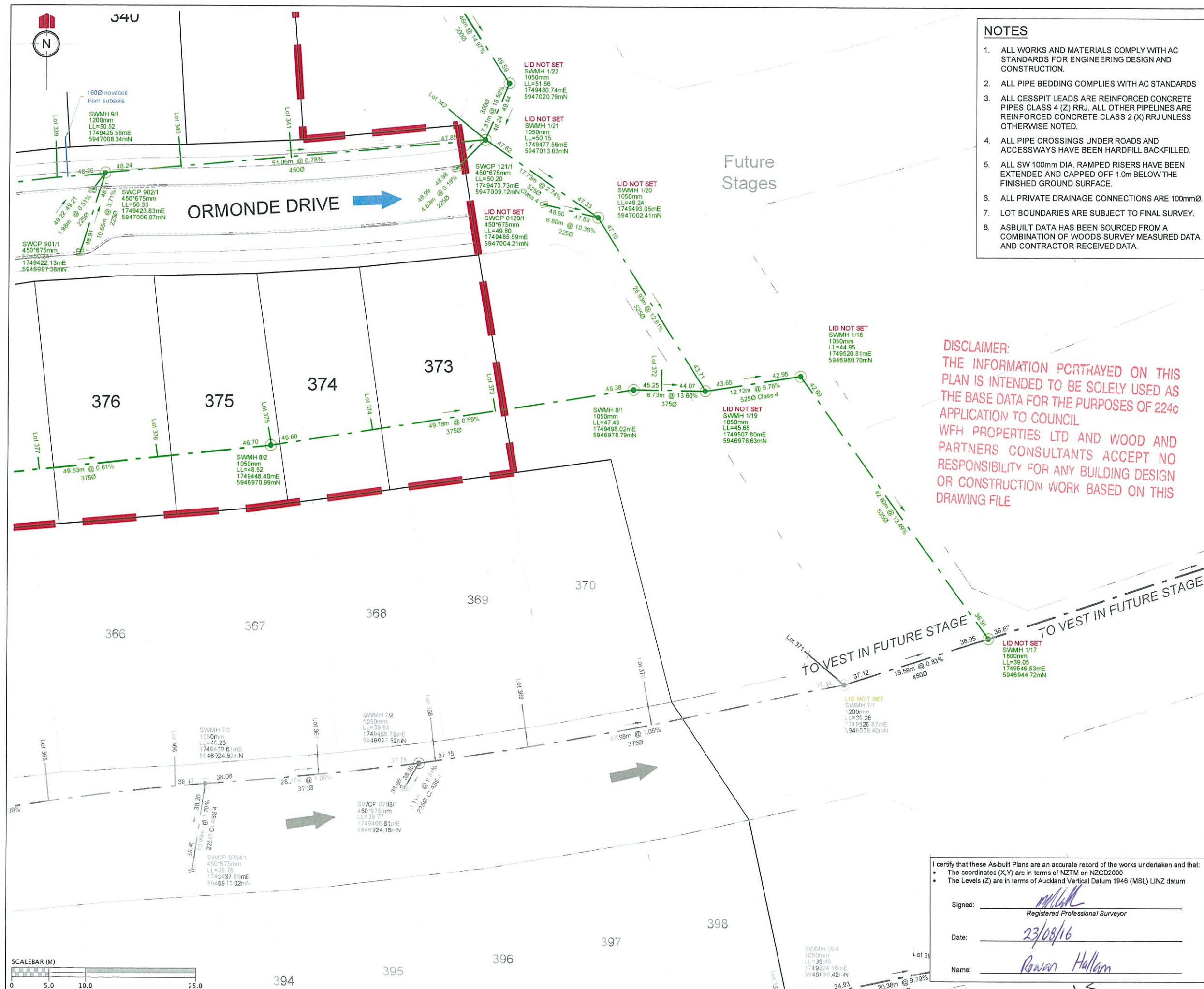


MILLWATER
PRECINCT 2
STAGE 3A

STORMWATER AS-BUILT
Sheet 3 of 4

AUCKLAND COUNCIL

DESIGNED: SB	ASBUILT
CHECKED: AC	DRAWN: AAC
APPROVED: MCH	SURVEYED: WOODS
JOB NUMBER: 33210	SCALE: 1:500 @ A3
ISSUED: AUG 2016	
DWG. NO. 33210-3A-AB-302	REV. 1



NOTES

1. ALL WORKS AND MATERIALS COMPLY WITH AC STANDARDS FOR ENGINEERING DESIGN AND CONSTRUCTION.
2. ALL PIPE BEDDING COMPLIES WITH AC STANDARDS
3. ALL CESSPIT LEADS ARE REINFORCED CONCRETE PIPES CLASS 4 (Z) RRJ. ALL OTHER PIPELINES ARE REINFORCED CONCRETE CLASS 2 (X) RRJ UNLESS OTHERWISE NOTED.
4. ALL PIPE CROSSINGS UNDER ROADS AND ACCESSWAYS HAVE BEEN HARDFILL BACKFILLED.
5. ALL SW 100mm DIA. RAMPED RISERS HAVE BEEN EXTENDED AND CAPPED OFF 1.0m BELOW THE FINISHED GROUND SURFACE.
6. ALL PRIVATE DRAINAGE CONNECTIONS ARE 100mmØ.
7. LOT BOUNDARIES ARE SUBJECT TO FINAL SURVEY.
8. ASBUILT DATA HAS BEEN SOURCED FROM A COMBINATION OF WOODS SURVEY MEASURED DATA AND CONTRACTOR RECEIVED DATA.

REVISION DETAILS		NAME	DATE
1.	DRAWING ISSUED	AAC	22/08/2016

LEGEND

STORMWATER MANHOLE	
STORMWATER CESSPIT	
STORMWATER DOUBLE CESSPIT	
OVERLAND FLOW	
NEW STORMWATER	
EXISTING STORMWATER	
SUBSOIL DRAINAGE	
STAGE BOUNDARY	

CLIENT:



MILLWATER PRECINCT 2 STAGE 3A

STORMWATER AS-BUILT
Sheet 4 of 4

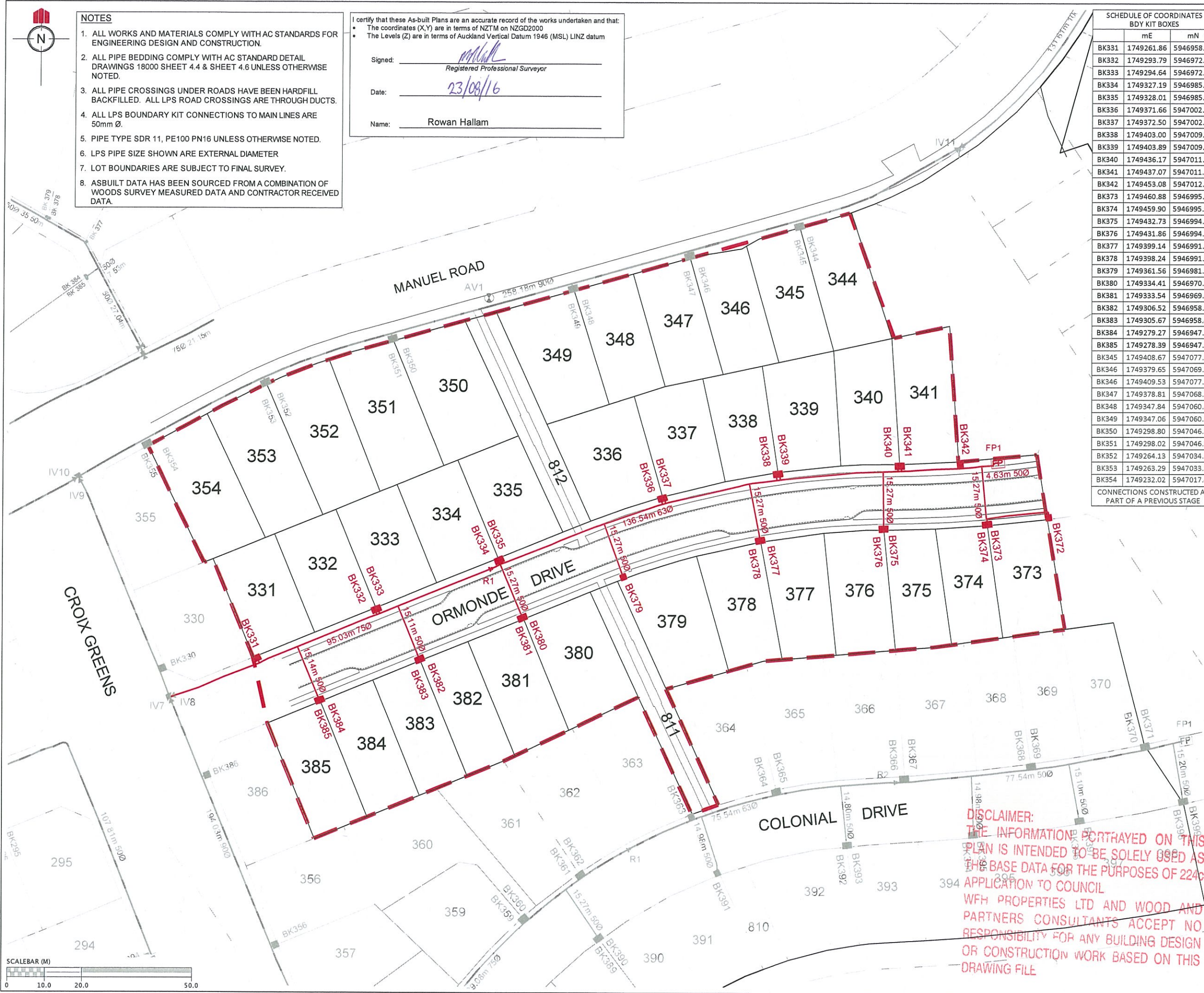
AUCKLAND COUNCIL

DESIGNED: SB	ASBUILT
CHECKED: AC	DRAWN: AAC
APPROVED: MCH	SURVEYED: WOODS
JOB NUMBER: 33210	SCALE: 1:500 @ A3
ISSUED: AUG 2016	
DWG. NO. 33210-3A-AB-303	REV. 1

I certify that these As-built Plans are an accurate record of the works undertaken and that:

- The coordinates (X,Y) are in terms of NZTM on NZGD2000
- The Levels (Z) are in terms of Auckland Vertical Datum 1946 (MSL) LINZ datum

Signed:
Registered Professional Surveyor
Date: 23/08/16
Name: Rowan Hallam



SCHEDULE OF COORDINATES BDY KIT BOXES		
	mE	mN
BK331	1749261.86	5946958.92
BK332	1749293.79	5946972.09
BK333	1749294.64	5946972.42
BK334	1749327.19	5946985.58
BK335	1749328.01	5946985.93
BK336	1749371.66	5947002.74
BK337	1749372.50	5947002.90
BK338	1749403.00	5947009.48
BK339	1749403.89	5947009.56
BK340	1749436.17	5947011.82
BK341	1749437.07	5947011.84
BK342	1749453.08	5947012.39
BK373	1749460.88	5946995.99
BK374	1749459.90	5946995.84
BK375	1749432.73	5946994.60
BK376	1749431.86	5946994.56
BK377	1749399.14	5946991.39
BK378	1749398.24	5946991.29
BK379	1749361.56	5946981.29
BK380	1749334.41	5946970.22
BK381	1749333.54	5946969.86
BK382	1749306.52	5946958.83
BK383	1749305.67	5946958.44
BK384	1749279.27	5946947.59
BK385	1749278.39	5946947.33
BK345	1749408.67	5947077.21
BK346	1749379.65	5947069.28
BK346	1749409.53	5947077.36
BK347	1749378.81	5947068.96
BK348	1749347.84	5947060.22
BK349	1749347.06	5947060.02
BK350	1749298.80	5947046.42
BK351	1749298.02	5947046.18
BK352	1749264.13	5947034.35
BK353	1749263.29	5947033.98
BK354	1749232.02	5947017.45

CONNECTIONS CONSTRUCTED AS PART OF A PREVIOUS STAGE

REVISION DETAILS

1. DRAWING ISSUED	AAC	22/08/16
-------------------	-----	----------

LEGEND

BK60

IV

FP

AV

R

LOW PRESSURE SEWER

EXISTING LOW PRESSURE SEWER

STAGE BOUNDARY

BOUNDARY KIT

ISOLATION VALVE

FLUSHING POINT

AIR VALVE

REDUCER

LOW PRESSURE SEWER

EXISTING LOW PRESSURE SEWER

STAGE BOUNDARY

CLIENT:

WFH

PROPERTIES

WOODS

Engineers. Surveyors. Planners.

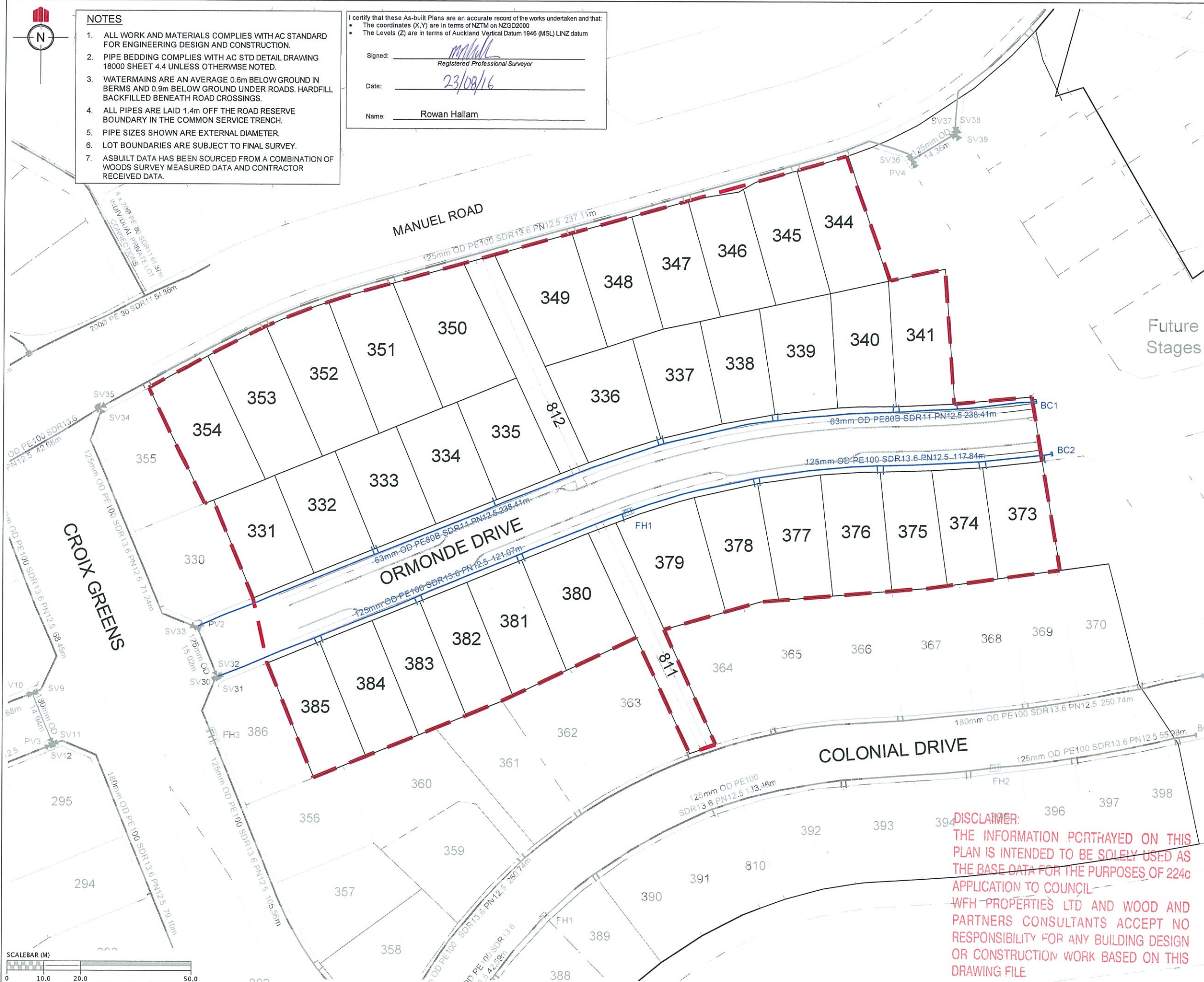
MILLWATER
PRECINCT 2
STAGE 3A

WASTEWATER ASBUILT PLAN

AUCKLAND COUNCIL

DESIGNED: SB	AS-BUILT
CHECKED: AC	DRAWN: AAC
APPROVED: MDA	SURVEYED: WOODS
JOB NUMBER: 33210	SCALE: 1:1000 @ A3
ISSUED: AUG 2016	
DWG. NO. 33210-03A-AB-400	REV. 1

DISCLAIMER:
THE INFORMATION PORTRAYED ON THIS
PLAN IS INTENDED TO BE SOLELY USED AS
THE BASE DATA FOR THE PURPOSES OF 224C
APPLICATION TO COUNCIL
WFH PROPERTIES LTD AND WOOD AND
PARTNERS CONSULTANTS ACCEPT NO
RESPONSIBILITY FOR ANY BUILDING DESIGN
OR CONSTRUCTION WORK BASED ON THIS
DRAWING FILE



NOTES

1. ALL WORK AND MATERIALS COMPLIES WITH AC STANDARD FOR ENGINEERING DESIGN AND CONSTRUCTION.
2. PIPE BEDDING COMPLIES WITH AC STD DETAIL DRAWING 18000 SHEET 4.4 UNLESS OTHERWISE NOTED.
3. WATERMAINS ARE AN AVERAGE 0.6m BELOW GROUND IN BERMS AND 0.9m BELOW GROUND UNDER ROADS. HARDFILL BACKFILLED BENEATH ROAD CROSSINGS.
4. ALL PIPES ARE LAID 1.4m OFF THE ROAD RESERVE BOUNDARY IN THE COMMON SERVICE TRENCH.
5. PIPE SIZES SHOWN ARE EXTERNAL DIAMETER.
6. LOT BOUNDARIES ARE SUBJECT TO FINAL SURVEY.
7. ASBUILT DATA HAS BEEN SOURCED FROM A COMBINATION OF WOODS SURVEY MEASURED DATA AND CONTRACTOR RECEIVED DATA.

I certify that these As-built Plans are an accurate record of the works undertaken and that:

- The coordinates (X,Y) are in terms of NZTM on NZGD2000
- The Levels (Z) are in terms of Auckland Vertical Datum 1946 (MSL) LINZ datum

Signed: Rowan Hallam
Registered Professional Surveyor

Date: 23/08/16

Name: Rowan Hallam

LEGEND

EXISTING WATERMAIN
HIGH PRESSURE WATERMAIN
SLUICE VALVE SV1
PEET VALVE PV
FIRE HYDRANT FH
BLANK CAP BC1
STAGE BOUNDARY

SCHEDULE OF COORDINATES		
FIRE HYDRANT		
	mE	mN
FH1	1749363.34	5946983.05

CLIENT:



MILLWATER
PRECINCT 2
STAGE 3A

WATERMAIN ASBUILT PLAN

AUCKLAND COUNCIL

DESIGNED: SB	AS-BUILT
CHECKED: AC	DRAWN: AAC
APPROVED: MCH	SURVEYED: WOODS
JOB NUMBER: 33210	SCALE: 1:1000 @ A3
ISSUED: AUG 2016	
DWG. NO. 33210-03A-AB-500	REV. 1

DISCLAIMER:
THE INFORMATION PORTRAYED ON THIS
PLAN IS INTENDED TO BE SOLELY USED AS
THE BASE DATA FOR THE PURPOSES OF 224c
APPLICATION TO COUNCIL.
WFH PROPERTIES LTD AND WOOD AND
PARTNERS CONSULTANTS ACCEPT NO
RESPONSIBILITY FOR ANY BUILDING DESIGN
OR CONSTRUCTION WORK BASED ON THIS
DRAWING FILE